

## **All Seasons Perth**

- Covered accessible parking bay adjacent hotel.
- Three accessible rooms, located on Level One. All are non smoking.
- Public accessible toilet in hotel foyer.

**Name:** All Seasons, Perth

**Location:** 15 Robinson Avenue, Perth

**Rating:** 3½ star

**Telephone:** 08 9328 0000

**Web:** <http://www.allseasons.com.au>

**Accessible parking bay onsite:** Yes

**Drop off available:** No

### **Closest accessible public transport:**

- No accessible public transport operates within the vicinity of this hotel.

**Accessible public toilet onsite:** Yes

**Accessible parking:** Two accessible parking bay in the adjacent under cover parking off Robinson Avenue.

- 2400mm overhead clearance through car park
- One bay directly inside the entrance with no elevated signage
- 3180mm wide
- Level ground
- Overhead clearance of 2400mm from the ground to the lowest obstruction

**External access:** A 1400mm wide footpath leads from the car park to the hotel foyer. The path of travel is suitable to accommodate all wheelchair sizes. There is a 40mm high speed hump at the entrance to the car park.

**Main entrance:** Level access through wide, glazed, automatic sliding doors

**Foyer:** Tiles throughout with stairs and a well signed 90°ramp (gradients less than 1:14) leading to upper reception level. There is ample circulation space for all wheelchair sizes.

Lounge seating with arm rests is provided in the foyer.

**Reception:** Counter is at standing height. There is an internet desk that is 700mm wide and has 700mm under bench clearance. A moveable swivel chair is provided.

**Signage:** General signage is clear, easy to read and in good colour contrast.

**Information:** Printed information produced by the hotel is in good colour contrast with an easy to read font. Brochures are available on low stands.

## Accessible public toilet:

Location: A unisex accessible toilet is located on the upper ground level adjacent to the reception desk.

Signage: There is no directional signage to the accessible toilet.

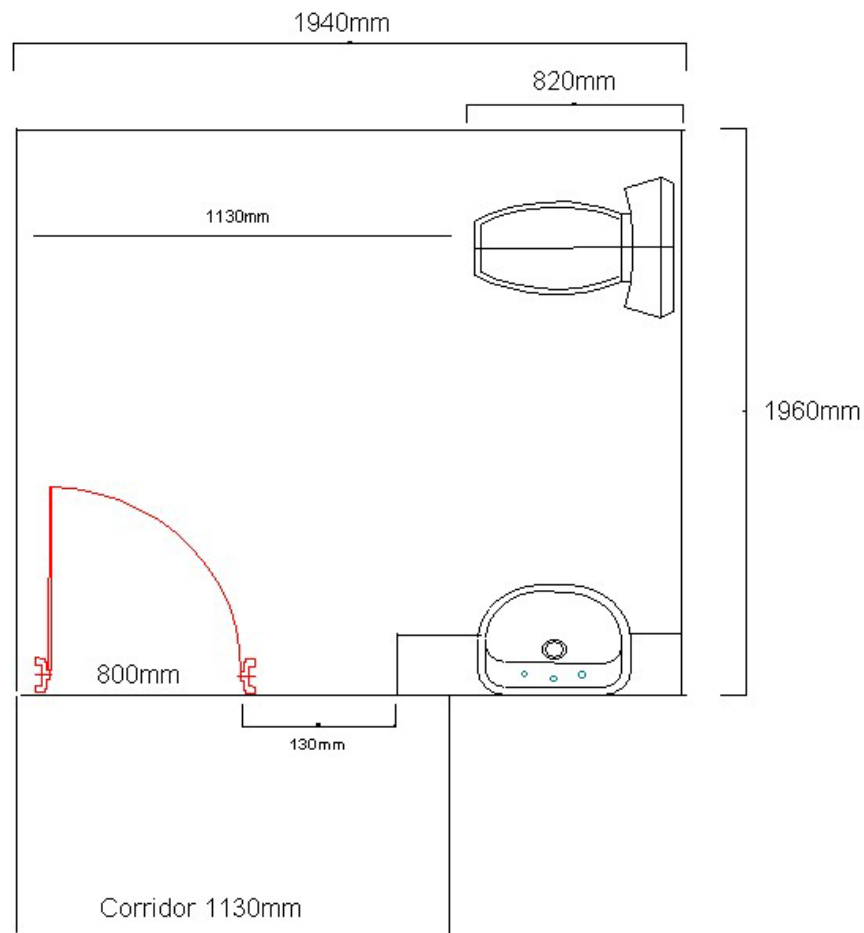
External access: The path of travel from the foyer to the toilet is via a 960mm opening to a short 1130mm wide corridor. There is sufficient space for a medium sized wheelchair to be manoeuvred through to the toilet.

Toilet door: 800mm wide manually opened entrance door is heavy to open and slow to close. It has a lever style handle and a large snib.

Pan height: 460mm

Basin height: 880mm

Lighting: There is a low switch within the cubicle.



**Lift:** A bank of two lifts, all provide access to all floors.

Both lifts are 1170mm x 2000mm, with a clear open door width of 900mm. Direction of travel information is visually displayed both externally and internally with no verbal information provided. All control buttons are within a range of 800mm - 1200mm high.

**Accessible rooms:** Three accessible rooms are located on the first floor, in close proximity to the lift landing and all are designated as non smoking.

**Emergency:** There are audible alarms in all rooms. Emergency egress maps are 1400mm high. The emergency stairs are located adjacent to the lift.

**Corridors to rooms:** Corridors are carpeted, flat and wide, accommodating all wheelchair sizes.

### **Accessible rooms:**

Door: A swing door that is 800mm wide, slow to close, with a lever handle. Access out of the room is restricted by limited space around the door (110mm on the internal latch side of the door). It would only be suitable for small to medium sized wheelchairs.

There is a high peep hole and access into the room is via a proximity card.

Tea and coffee: Facilities are at standing height and are located in the corridor inside of the entrance door. A side approach is necessary and there is sufficient circulation space for all wheelchair sizes.

Lounge: Lounge seating is located in the bedroom, near the bed. Chairs with armrests and a seat height of 425mm are provided. There is sufficient space for wheelchairs of all sizes to move through the bedroom / lounge area.

Bed: A queen size bed in the room is on castors and there is 120mm available space under the bed to accommodate a mobile hoist. The bed is soft to medium.

### Bathroom:

Door: 820mm wide swing door that is light to open. Has a circular lever handle with small snib.

Pan height: 470mm

Basin height: 820mm

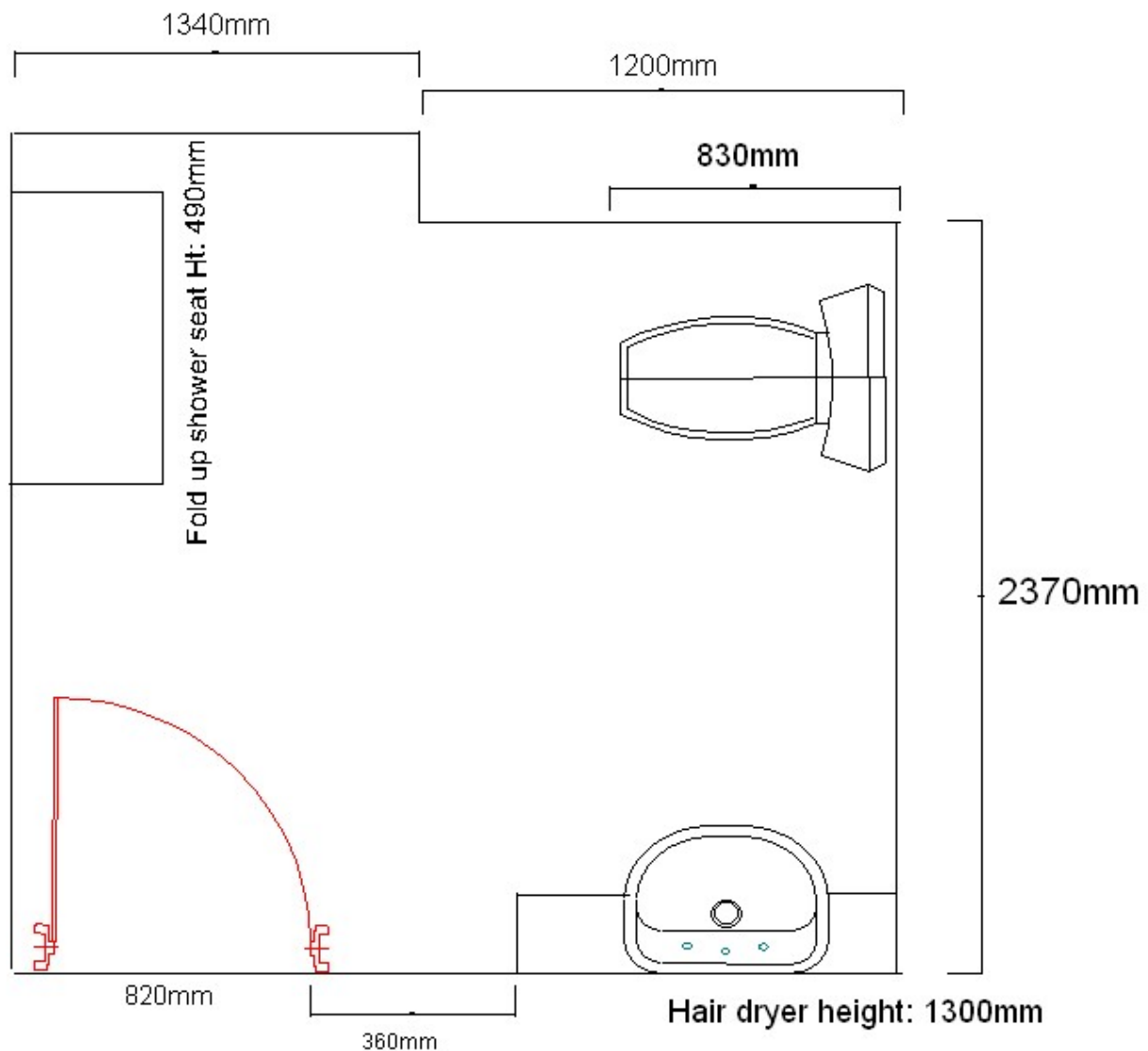
Shower: There is level access into the shower with a hand held shower (at a high fixed height) and wall mounted fold down seat

Emergency call buttons: Not installed

Coat hook: 1400mm high

Hair dryer: Standing height





### Room facilities:

- TV
- Lowered light switches
- Remote controlled air conditioning
- A safe at sitting height

### Sinnamons Bistro Restaurant:

Sinnamons Restaurant is used for the buffet breakfast. Lunch is also served and there is a high bar. It is located on the lower ground floor directly inside the hotel entrance. The breakfast is self serve buffet style with counters at sitting height.

**Seating:** Tables are within the restaurant area with some alfresco available. Tables are moveable, have central pedestal and chairs do not have armrests. There is sufficient space for all styles of wheelchairs to move through the restaurant.

**Menu:** Good colour contrast with 12 point font.

**Accessible toilet:** Available at upper ground level near the reception desk, access is via the ramp.

**Pool:**

There is no pool available.

**Guest Laundry:** There is no laundry available.

**Information prepared for the City of Perth, December 2006.**

**Care has been taken to ensure the accuracy of this information however no guarantee is given that the facility is fully accessible.**

**Please advise the City of Perth of any access changes since publication.**

This Report Template has been designed for use in the 'You're Welcome; WA Access Initiative' project only. It is not intended for any other purpose.

© Disability Services Commission 2005