

## **Chifley on the Terrace, Perth**

### **Summary:**

- A public unisex accessible toilet is provided to the rear of 185 Bar and Restaurant.
- Two rooms are accessible, both are non-smoking.
- Passenger lift provided from street level to hotel foyer.

**Name:** Chifley on the Terrace, Perth

**Location:** 185 St Georges Terrace Perth

**Rating:** 4½ star

**Telephone:** 08 9226 3355

**Web:** [www.chifleyhotels.com](http://www.chifleyhotels.com)

**Accessible parking bay onsite:** No.

**Drop off available:** No.

### **Closest accessible public transport:**

- Esplanade Busport
- Perth Train Station
- Blue CAT stop 1, St Georges Terrace

### **Closest accessible parking:**

- His Majesty's Car Park (CPP) (4 bays)
- Westralia Square (Wilson's)

**Accessible public toilet onsite:** Yes

**Pick up / set down bay:** A taxi zone is located at the front of the hotel, there is no kerb ramp to the footpath.

**External access:** Access from footpath to the main foyer of the hotel is via:

- Six steep steps with one handrail on the right hand side ascending;
- Restricted use passenger lifting platform

### **Restricted use passenger lifting platform:**

A passenger lifting platform is installed adjacent the main stairs and provides access to the hotel foyer and 185 Bar and Restaurant. The platform size is 860mm (width) x 1160mm (depth) and is open for public use. A staff member does not have to be present to operate the lift. It has a load capacity of 300kg or one wheelchair and one attendant.

The lift is a walk through style, both access doors are half height and the clear open door width is 870mm. The lift has a constant pressure push button switch to open the doors and operate the lift.

**Main entrance:** Level access through a single, automatic sliding door. Clear open door width of 950mm.

**Foyer:** Tiled floor, level throughout. Ample circulation space for all wheelchair sizes.

Lounge seating is provided in the foyer. The seats are soft with armrests and a seat height of 400mm.

**Reception:** Counter is at standing height. No better hearing card on display.

**Telephone:** No public telephone in foyer.

**Signage:** There is limited directional signage; the letters are light grey on a grey background.

**Information:** There is a table on the external foyer area that has a display of local tourist brochures. It is at a high standing height.

### **Accessible public toilet:**

**Location:** An accessible toilet is located at the rear of 185 Bar and Restaurant.

**Signage:** There is no directional signage to the accessible toilet; however the toilet door displays the access symbol.

**External door:** 760mm wide and light to operate, fast to close.

High lever handle

**Toilet door:** 760mm wide, heavy to operate, fast to close.

High lever handle with a small snib

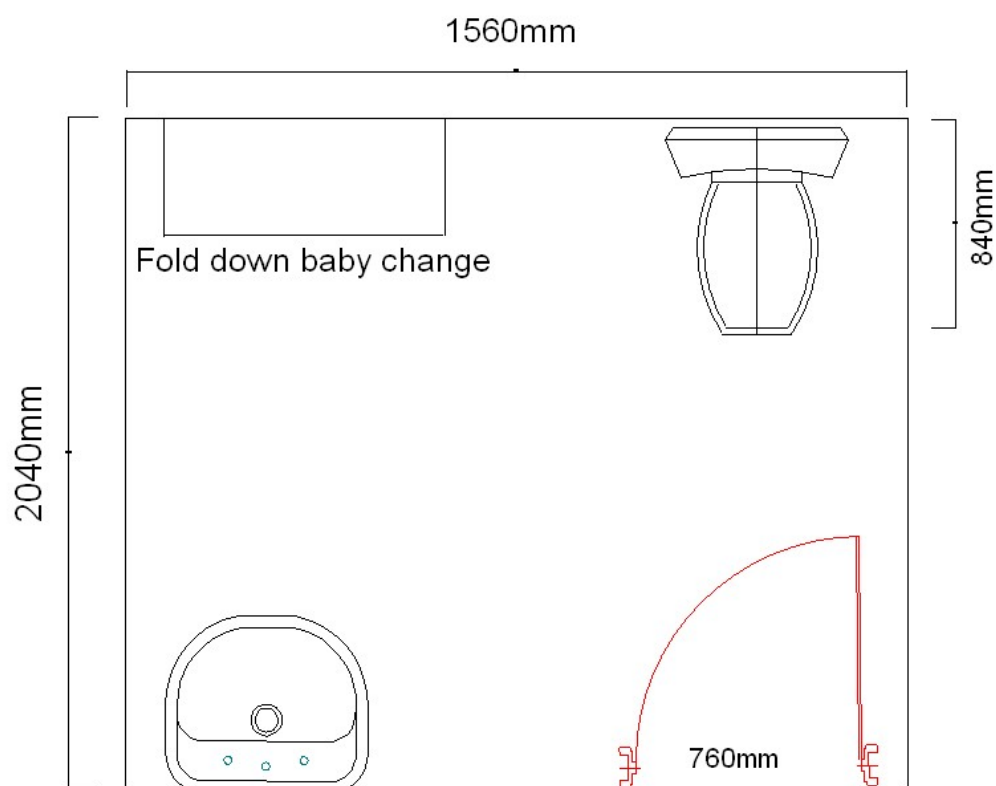
Access into the toilet may not be suitable for larger style wheelchairs due to the narrow corridor leading to the toilet (1060mm wide)

**Pan height:** 440mm.

**Basin height:** 800mm.

**Baby change table:** Fold down baby change table provided in the cubicle.

**Lighting:** Low light switch.



**Lift:** A bank of two lifts providing access to all floors. There is also a goods lift.

The lifts are identical in layout with a width of 1850mm and a depth of 1600mm with a clear open door width of 1060mm. Direction of travel information is displayed both externally and internally, and there is a tonal announcement outside. The internal buttons are up to 1050mm and the external up to 1260mm.

**Accessible rooms:** There are two accessible rooms, one on the second floor and one on the third. They have the same layout. Both accessible rooms have adjoining doors to adjacent rooms. Both rooms are non smoking.

**Emergency:** There are audible emergency alarms in both rooms. Emergency egress maps are located behind the entry door at a high standing height. The fire stairs have a landing of standard size. There is no designated place of refuge for wheelchair users.

**Corridors to rooms:** The corridor is of a medium size, accommodating small to medium sized wheelchairs (1180mm). Corridors are carpeted.

**Accessible rooms:**

Door: Door width is 800mm. The entrance swing door is heavy to open and slow to close, with a lever handle. Access into the room is suitable for a small to medium wheelchairs due to restricted space around the entry door (obstructed by closet) and narrow internal corridor (1040mm)

Peep holes are set at a high standing height. Access into the room is via a key card.

Tea and coffee: Facilities are in a small cupboard and stored at floor level.

Lounge: Lounge seating is located in the bedroom, near the bed. Lounge chair is soft with armrests and a seat height of 460mm.

Bed: The Queen bed in the room is on castors, it is 620mm high and there is 130mm available space under the bed to accommodate a mobile hoist. The bed is of medium firmness. There are clearances of approximately 1000 on either side of the bed.



**Bathroom:**

Door: 1000mm wide swing door that is light to open. Has a lever handle and small snib.

Pan height: 470mm

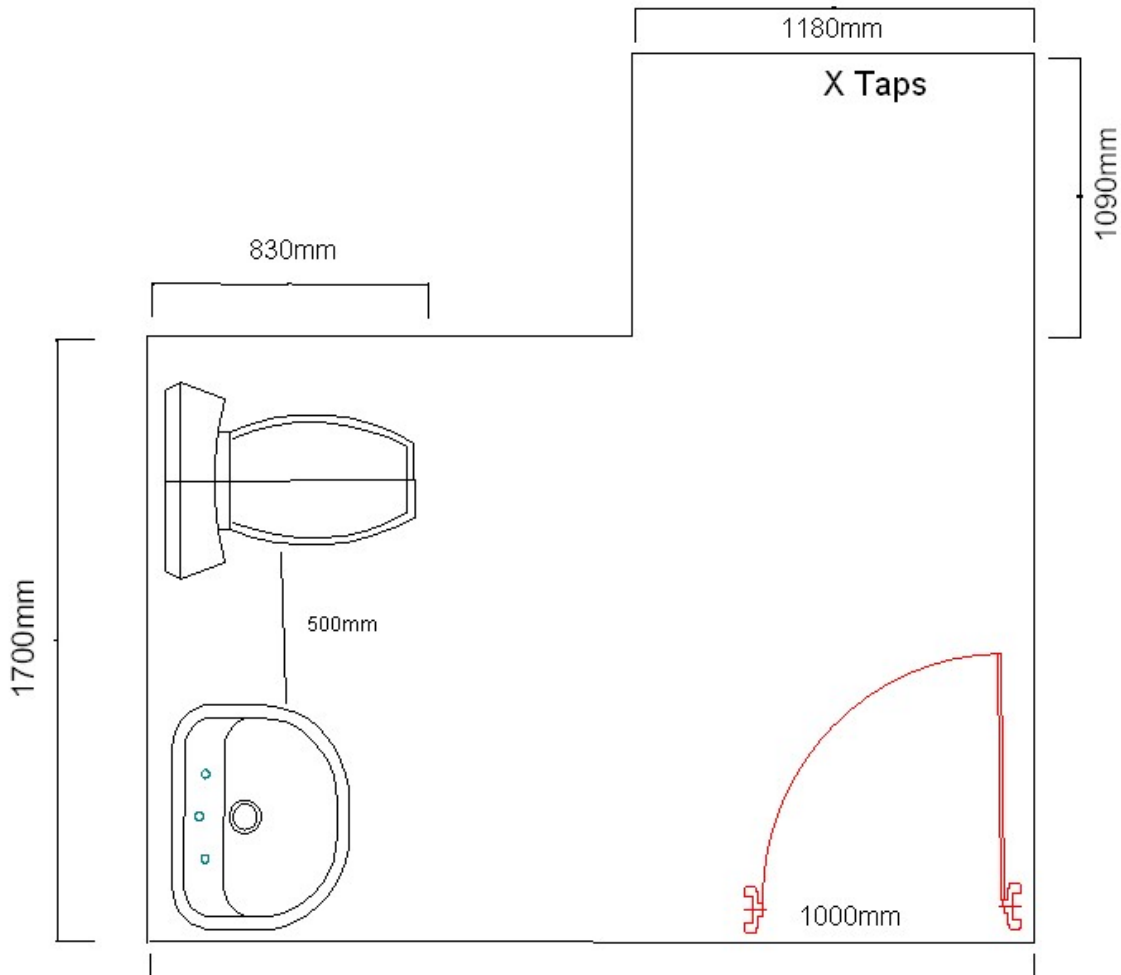
Basin height: 800mm

Shower: Three sided shower, no curtain. Hand held shower hose, no wall mounted bench or free standing shower chair provided.

Emergency call buttons: Nil.

A hair drier is wall mounted at a sitting height

Lighting: Low switch in bathroom.



**Room facilities:**

- Remote control TV
- Lowered light switches
- Light switch at bed head

**185 Bar and Restaurant**

The 185 Restaurant is used for a buffet breakfast. It also serves lunch and dinner. It is located at foyer level, behind the hotel reception. Breakfast is served buffet style.

The buffet area has a carpeted floor and the surrounds are wooden. A small ramped lip (approximately 50mm high) borders the buffet area serving as a transition between the carpet and wood floor area.

Buffet table is at sitting height. There is circulation space within the buffet area to accommodate all wheelchair types. Tables are moveable, have corner legs and knee clearance of 720mm. Chairs do not have armrests.

The menu in the bar area is in good colour contrast in an easy to read font.

The bar area has natural light.

**Pool & Gym:**

Active 8 Paragon Health and Fitness Club

Location: 811 Hay Street, Perth; Paragon CBD Arcade, Level 1

**Guest Laundry:** Located in the basement. Access is restricted by a 20mm lip at the door and a table and safety bar on either side of the entry door. Door width is 750mm. The laundry has a top loader washing machine and front loader drier at high standing height. Space available in front of the drier would enable side access for a small wheelchair. The hotel offers a laundry service.

**Information prepared for the City of Perth, January 2007.**

**Care has been taken to ensure the accuracy of this information however no guarantee is given that the facility is fully accessible.**

**Please advise the City of Perth of any access changes since publication.**

This Report Template has been designed for use in the 'You're Welcome; WA Access Initiative' project only. It is not intended for any other purpose.

© Disability Services Commission 2005