

City Stay Apartment Hotel

Summary:

- Two wheelchair friendly apartments on level two. Apartments are one or two bedroom.

Name: City Stay Apartment Hotel.

Location: 875 Wellington Street, West Perth.

Rating: 3½ star.

Telephone: 08 9322 6061

Web: <http://www.citystay.com.au>

Accessible parking bay onsite: No.

Drop off available: Yes.

Closest accessible public transport:

- Red CAT stop 27, Murray Street

Accessible public toilet onsite: No

Accessible parking: There is no designated accessible parking on site; however a bay can be set aside on the lower parking level, behind the hotel reception, by prior arrangement. Access into the foyer from this parking is via a set of rear steps or down the vehicular driveway at the side of the hotel and off the Wellington Street footpath.



Pick up / set down bay: There is a standard width undercover vehicle drop off in the driveway to the left of the hotel, off Wellington Street.

External access: There is a short slope with a gradient of 1:12 from the Wellington Street footpath to the main entrance, suitable to accommodate all wheelchair sizes.

Main entrance: Level access through 890mm wide, glazed, automatic sliding doors.

Foyer: A tiled floor that is level throughout. Ample circulation space for all wheelchair sizes.

Couches are provided in the foyer. The seats are soft, have armrest and a seat height of 440mm.

Reception: The counter is at standing height. The hotel is locked after 9pm and access after this time is arranged via an intercom and bell at the rear door, located off the car park. There are 4 steps down to this door and intercom. People unable to use the steps will need to make prior arrangements with reception staff.

Telephone: A public telephone, located within the foyer has 570mm wide knee access and is on a 760mm high desk. A swivel style office chair is provided. The telephone is coin operated with push buttons and adjustable volume control. Highest operable control is 1320mm.

Internet access: There is a free standing public internet kiosk in the hotel foyer. The keyboard is 700mm high with a fixed trackball. The kiosk has a fixed stool attached to the front of the unit. The hotel has wireless 'hot spots' located in specific areas.

Signage: External signage is clear, easy to read and in good colour contrast. There is minimal internal signage and staff assist as required.

Information: Printed information produced by the hotel is in good colour contrast and an easy to read font.

Lift: There is one lift that provides access to all floors at the front of the hotel. Facilities on upper levels at the rear of the hotel, such as the communal laundry and gym are accessed via the stairs.

The lift is 1370mm deep x 1530mm wide; with a clear open door width of 880mm. Direction of travel information is displayed both externally and internally. External buttons are 1240mm high and illuminate when depressed. Internal buttons are up to 1600mm high, have colour contrasted numbers and illuminate when depressed.

Accessible rooms: There are two designated accessible apartments within the hotel, both located on level two, a smoking floor. One apartment has two bedrooms and a laundry and the other has a one bedroom and no laundry. Both rooms have similar layouts and other facilities. The two bedroom apartment was reviewed.

Emergency: There are audible alarms in all apartments. Emergency egress maps are located behind the door at standing height. The fire stairs, adjacent to the two bedroom apartment have standard sized landing.

Corridors to rooms: Corridors are carpeted, wide, accommodating all wheelchair sizes.

Accessible rooms:

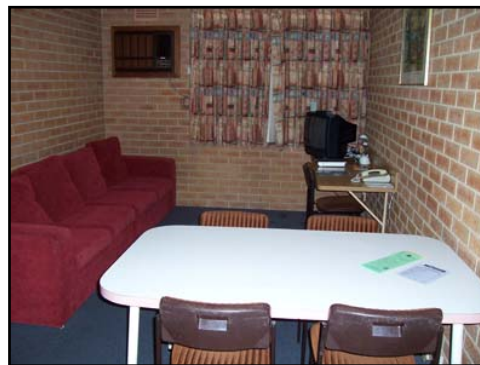
Door: Door width is 740mm. The entrance swing door is medium/light to open and slow to close, with a lever handle and a large internal snib. Access into the room is suitable for medium sized wheelchairs only due to an external wall adjacent to the entry door. Access into the room is via a key card.

Kitchen: The entry door opens directly into the kitchen with sufficient space to accommodate wheelchairs of all sizes. The kitchen bench is 930mm high. The power point is at 1100mm high with a 580mm reach across the bench. There is an electric stove with side mounted controls.

There is no public restaurant associated with the hotel; however room service breakfast can be ordered.



Lounge: There is a separate sitting room that has a soft couch with a seat height of 400mm. The dining table and desk are both 710mm high with 680mm knee access. Furniture is moveable, with the present configuration there is 640mm space between the table and couch.

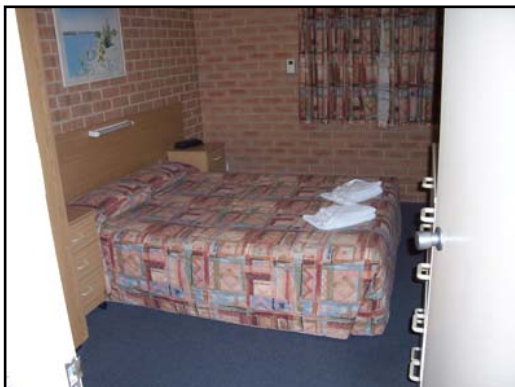


Bedroom: Both doors are 760mm wide, have door knobs and are light to open.

Bedroom 1: Off the corridor with 880mm width. This room has a double bed on castors, 450mm high with 135mm available space under the bed to accommodate a mobile hoist. The bed is firm with 1500mm clear space at the side.

Bedroom 2: Off the corridor with 790mm minimum width. This room has two single beds with 500mm space between the beds.

The wardrobes are at standing height with two low shelves. There is a separate chest of drawers.



Bathroom: The bathroom is at the end of the corridor that houses the laundry facilities. The corridor width at the entrance is 940mm. Due to the door and corridor width there is sufficient space for smaller style wheelchairs only.

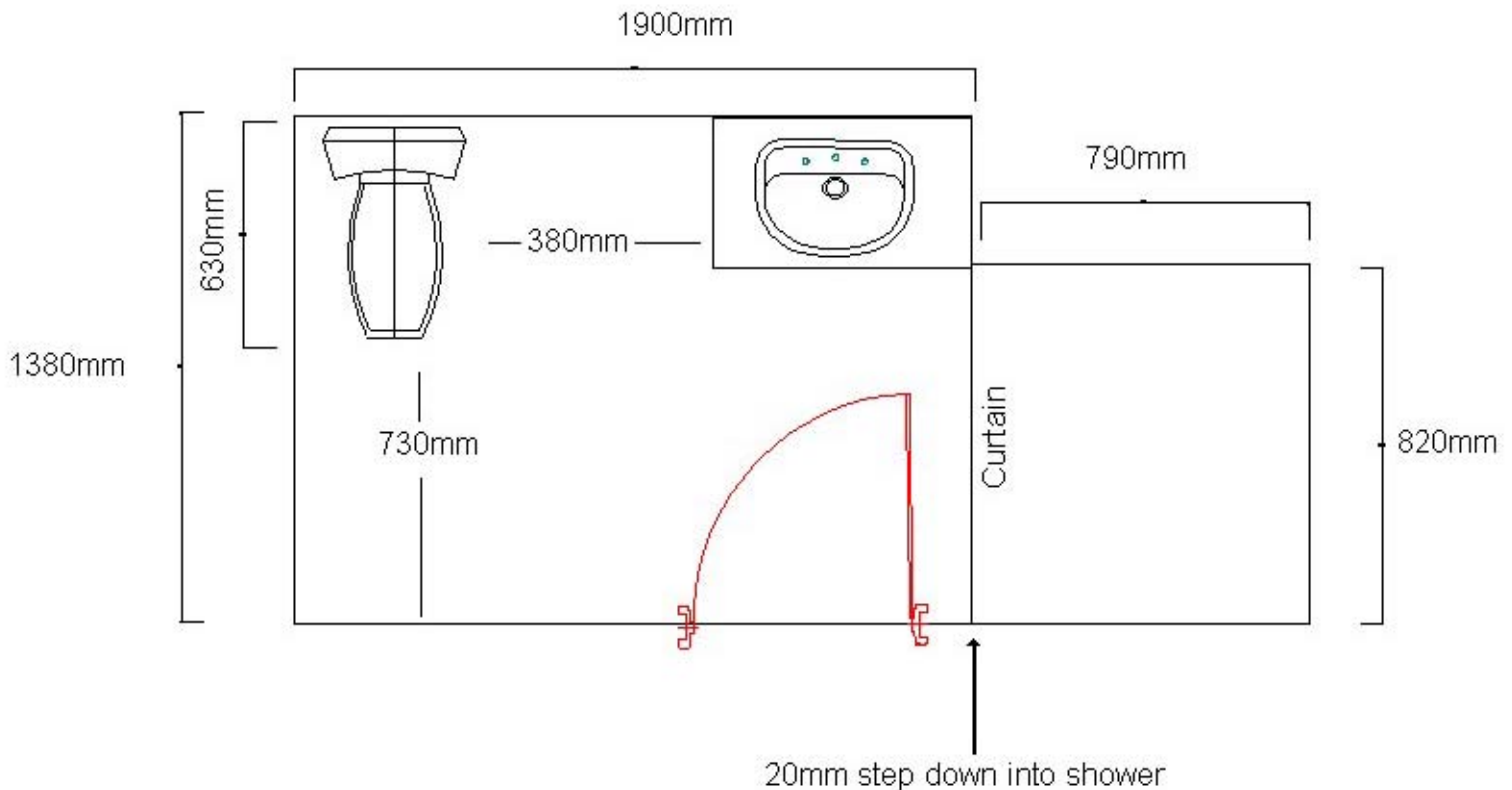
Door: 660mm wide swing door that is light to open. Has a circular door knob with push button lock.

Pan height: 430mm.

Basin height: 900mm.

Shower: There is a 20mm lip down to the shower through an 820mm wide opening.





Laundry: The two bedroom apartment has a top loading washing machine and high wall mounted dryer in the corridor leading to the bathroom. There is 940mm clear space in front of the washing machine.

The one bedroom apartment does not have a laundry and communal laundry facilities are at the rear of the hotel accessible by steps.

Room facilities:

- TV with remote control
- Volume control telephone
- Light switches at standing height
- Wall mounted air conditioning, with controls at standing height

Pool and Gym:

Location: At the rear of the reception off the lower level car park.

Gate: 950mm wide with a high release latch (1600mm) (in order to comply with safety requirements).

Style: The open aired pool is below ground with access via steps.

The gym is in the rear section of the hotel and is accessed via steps.

Information prepared for the City of Perth, March 2007.

Care has been taken to ensure the accuracy of this information however no guarantee is given that the facility is fully accessible.

Please advise the City of Perth of any access changes since publication.

This Report Template has been designed for use in the 'You're Welcome; WA Access Initiative' project only. It is not intended for any other purpose.