

## **Criterion Hotel Perth**

### **Summary:**

- Spacious unisex accessible toilet is located on the ground floor.
- Accessible double room with space bathroom.

**Name:** Criterion Hotel Perth.

**Location:** 560 Hay Street Perth

**Telephone:** 08 9325 5155

**Web:** [www.criterion-hotel-perth.com.au](http://www.criterion-hotel-perth.com.au)

**Accessible parking bay onsite:** No

**Drop off available:** Yes

### **Closest accessible public transport:**

- Perth Train Station
- Red CAT stop 13, Hay Street

**Accessible public toilet onsite:** Yes

### **Closest accessible parking:**

- Pier Street Car Park (CPP) (6 bays)

### **Pick up / set down bay:**

- A Universal drop off bay is located on Hay Street opposite the Hotel, towards Barrack Street.
- 1/4P standard pick/set down bay outside the hotel.

### **External access:**

- Level access from the universal bay, via the Barrack Street traffic intersection, to the hotel foyer. Suitable to accommodate all wheelchair sizes.

**Main entrance:** 760mm wide manual swing door that is heavy to open and fast to close, with a D style handle.

**Foyer:** Spacious, carpeted foyer that is level throughout. Ample circulation space for all wheelchair sizes. Lounge seating is provided in the foyer. The seats are soft with a seat height of 440mm.

**Reception:** Counter is at standing height.

**Internet access:** Computers are provided on a table in the foyer, with knee access 640mm high and 730mm wide. The table is 740mm high. Seats without armrests, that are 460mm high, are provided.

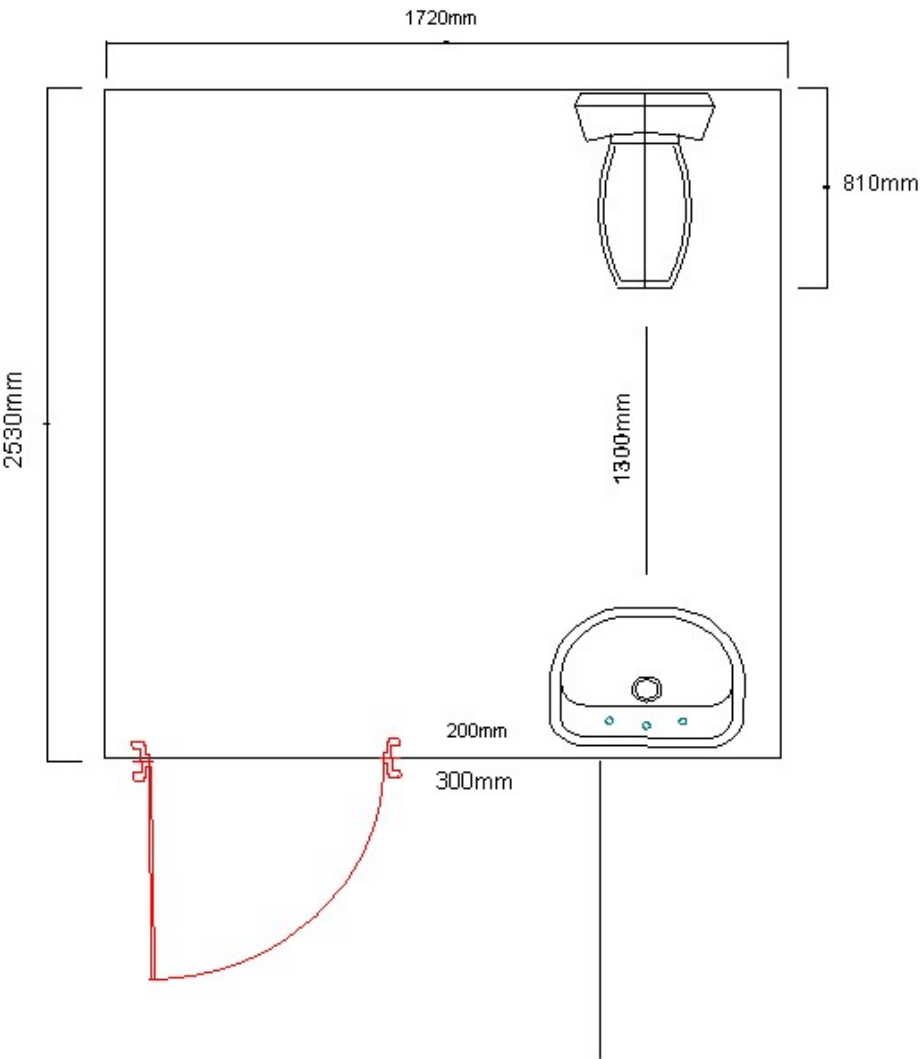
**Signage:** All signage is clear, easy to read and in good colour contrast. There is directional signage to all essential services. Staff are also available to assist as required.

### **Accessible public toilet:**

**Location:** An accessible toilet is located on the ground floor down the central corridor leading to the rear of the hotel.

**Signage:** The access symbol is located on the toilet door.

Door 780mm wide with a circular knob style handle with small snib.  
Pan height: 460mm  
Basin height: 780mm  
Lighting: Low switch in cubicle.



**Accessible rooms:** There is one accessible room, number 108 which is located on the ground floor. All rooms are non smoking.

**Emergency:** There are audible emergency alarms in all rooms. Emergency egress maps are located behind the room doors at standing height.

**Corridor to room:** A central door 1180mm wide leads to the accessible room, suitable to accommodate wheelchairs of all sizes.

### **Accessible rooms:**

Door: 900mm wide swing door with a lever handle. Access into the room is suitable for wheelchairs of all sizes due to the wide door and space available around the door. There is a peep hole in the door, at sitting height. Entry is via a key card, which is also required to activate the lights.

Tea and coffee: Facilities are at sitting height and are located in a cupboard. There is a 770mm space between the ends of the beds and the cupboard. Access will therefore be suitable for a smaller wheelchair only and a side approach would be necessary.



Desk: A desk and chair are provided in the bedroom, the chair is 450mm high without armrests and the desk provides a knee clearance of 620mm. Again, the desk is located at the end of the beds and access may be restricted to smaller style wheelchairs.



Bed: A double and single bed are located in the room. There is sufficient space for small to medium size wheelchairs, with a space of approximately 100mm between / at the side of the beds.

Beds are on castors providing flexibility in positioning. They are 510mm high and there is 120mm available space under the bed to accommodate a mobile hoist. The beds are soft.

### Bathroom:

Door: 900mm wide swing door with D handle and large snib.

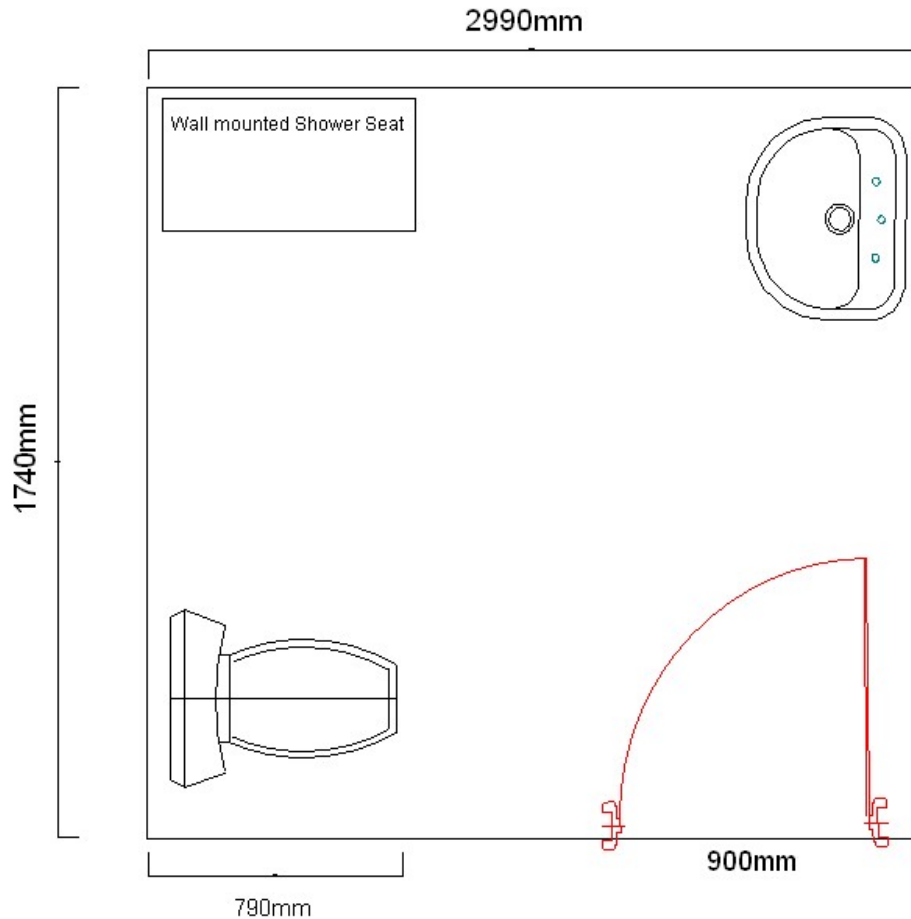
Pan height: 470mm high.

Basin height: 800mm.

Shower: Hand held shower and wall mounted fold down seat at 440mm.

Other: A shelf is provided at standing height and a coat hook at a very high standing height.

Emergency call buttons: Nil.



### Room facilities:

- Remote controlled TV
- Volume control telephone
- Lowered light switches
- Remote controlled air conditioning

### The Criterion Cafe

The Criterion Café is located off the wide Hay Street footpath or from the Hotel foyer. The café is spacious, accommodating wheelchairs of all styles. The self serve buffet breakfast is at sitting height where food displays are easy to see and the payment counter is at standing height.

Tables are moveable and have substantial knee clearance with corner legs and a height of 730mm from ground level. Moveable chairs at a height of 420mm.

See separate report for further details.



**Information prepared for the City of Perth, February 2007.**

**Care has been taken to ensure the accuracy of this information however no guarantee is given that the facility is fully accessible.**

**Please advise the City of Perth of any access changes since publication.**

This Report Template has been designed for use in the 'You're Welcome; WA Access Initiative' project only. It is not intended for any other purpose.

© Disability Services Commission 2005