

Crowne Plaza Perth

Summary:

- There are three accessible rooms, located on the second floor, all are non smoking
- A well appointed unisex accessible toilet is located on the ground floor at the rear of the hotel, opposite the conference rooms
- Access to Gusti restaurant is via a wheelchair stair lift.

Name: Crowne Plaza Perth.

Location: 54 Terrace Road, Perth.

Rating: 4½ star.

Telephone: 08 9325 3811

Web: <http://www.crowneplaza.com>

Accessible parking bay onsite: No.

Drop off available: Yes.

Closest accessible public transport:

- Red CAT stop 12, Hay Street

Accessible public toilet onsite: Yes

Accessible parking: There are no designated accessible bays within the parking area. Valet parking is available.

Pick up / set down bay: There is a covered vehicle drop off area, suitable for cars and vans, located at the side of the hotel, off Terrace Road Street.

External access: Level access from drop off bay to the hotel foyer, suitable to accommodate all wheelchair sizes.

Main entrance: Level access through wide, glazed, automatic sliding doors.

Foyer: The foyer is tiled with the reception, concierge desks and the lifts at entrance level. There are two steps, with no handrail, down to a bar and lounge area. A portable ramp can be installed on request.

Lounge and table seating is provided at the lower level. The seats are 400mm high and have arm rests.

Reception: Both the reception and concierge counters are at standing height. Portage is available.

Telephone: A public telephone is located in the lower lounge / bar area within a 1220mm wide corridor leading to male and female public toilets. The bench is 1100mm high, with knee access. The telephone is coin operated with push buttons and no adjustable volume control. Highest operable control is 1500mm.

Internet access: Computers are provided in a Business Centre on level 1. The entrance door is 7700mm wide with sufficient space for medium style wheelchair to enter and move around. Computers are on desks with 680mm knee clearance and a swivel style office chair is provided.

Signage: All signage has large easy to read font. Sign boards and directional signage does not have good colour contrast and is on a reflective surface.

Information: Printed information produced by the hotel is in good colour contrast and an easy to read font. There is no TTY available.

Accessible public toilet:

Location: An accessible toilet is located on the ground floor at the rear of the hotel opposite the Conference Rooms. It is the accessible toilet for people attending conferences and Gusti Restaurant. In order to access the toilet from Gusti Restaurant guests will be required to use the stair mounted lifting platform, move through the foyer, past the lifts. Access is off the corridor leading to the rear entrance.

Signage: The directional signage from the lounge to the accessible toilets is available, but may be difficult to locate.

Entrance is through a 1300mm wide airlock with a 770mm wide door, providing sufficient space for small to medium size wheelchairs. The door is light to operate and fast to close.

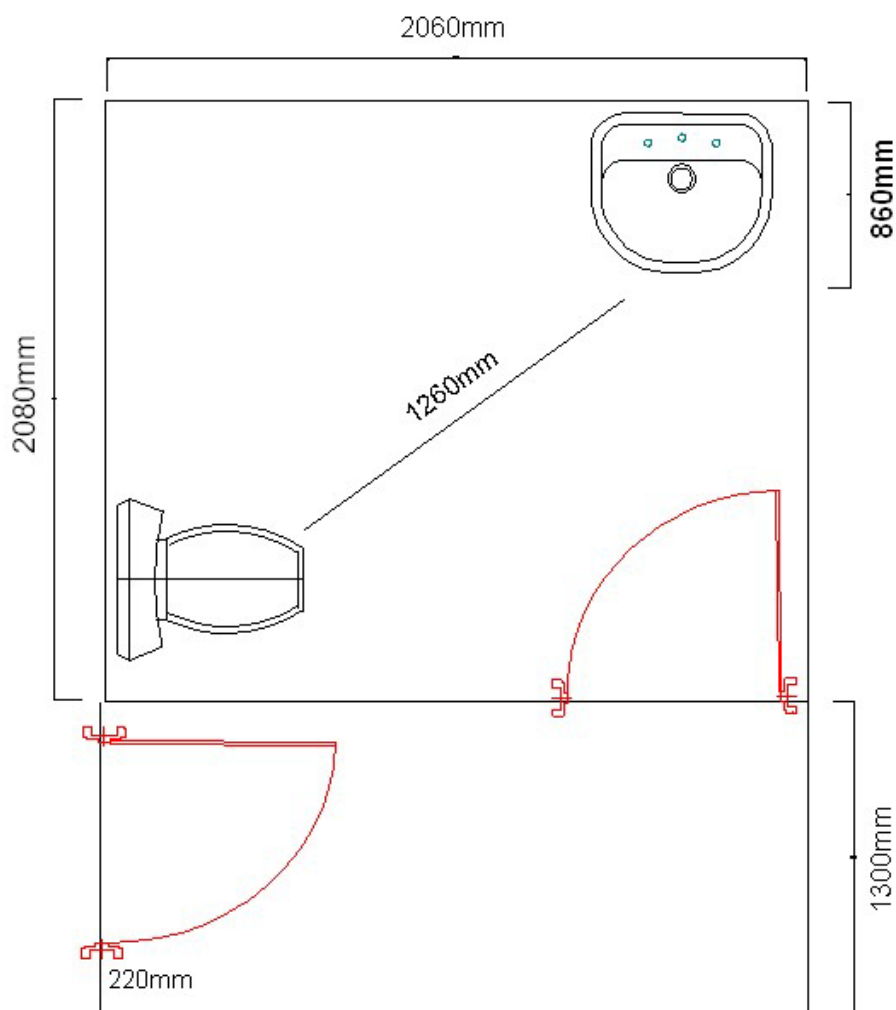
The toilet door is 770mm wide, light to operate and slow to close.

D style handle with large snib.

Pan height: 480mm.

Basin height: 760mm.

Lighting: There is a switch at 1300mm high.



Lift: A bank of two lifts, each provide access to all floors.

Both lifts are 1330mm x 1540mm, with a clear open door width of 790mm. Direction of travel information is displayed both externally and internally. There are no verbal announcements. All buttons are within a range of 1160mm - 1270mm high.

Accessible rooms: There are three accessible rooms within the hotel, all non smoking and located on level two. All rooms have adjoining doors to adjacent rooms.

Emergency: There are audible alarms in all rooms. Emergency egress maps are located at 1400mm high. The closest emergency exit has minimal space on the stair landing that could accommodate a small wheelchair.

Corridors to rooms: Corridors are carpeted, generally wide (1200mm at entrance to the room) and level, accommodating all wheelchair sizes.

Accessible rooms:

Door: Door width is 740mm. The entrance swing door is heavy to open and fast to close, with a lever handle. Access into the room is suitable for smaller wheelchairs due to restricted space around the entry door (obstructed by a narrow internal corridor – 950mm wide).

The peep hole is set at standing heights in the door. Access into the room is via a key card.

Tea and coffee: Facilities are located in the internal corridor. The corridor is 950mm wide, the bench is 960mm high, requiring a 540mm side reach to appliances.

Lounge: Lounge seating is located in the bedroom, near the bed. Chairs are deep and firm, have armrests and a seat height of 460mm.

Bed: The queen size bed is on castors, it is 460mm high and there is 110mm available space under the bed to accommodate a mobile hoist. The bed is firm.



Bathroom:

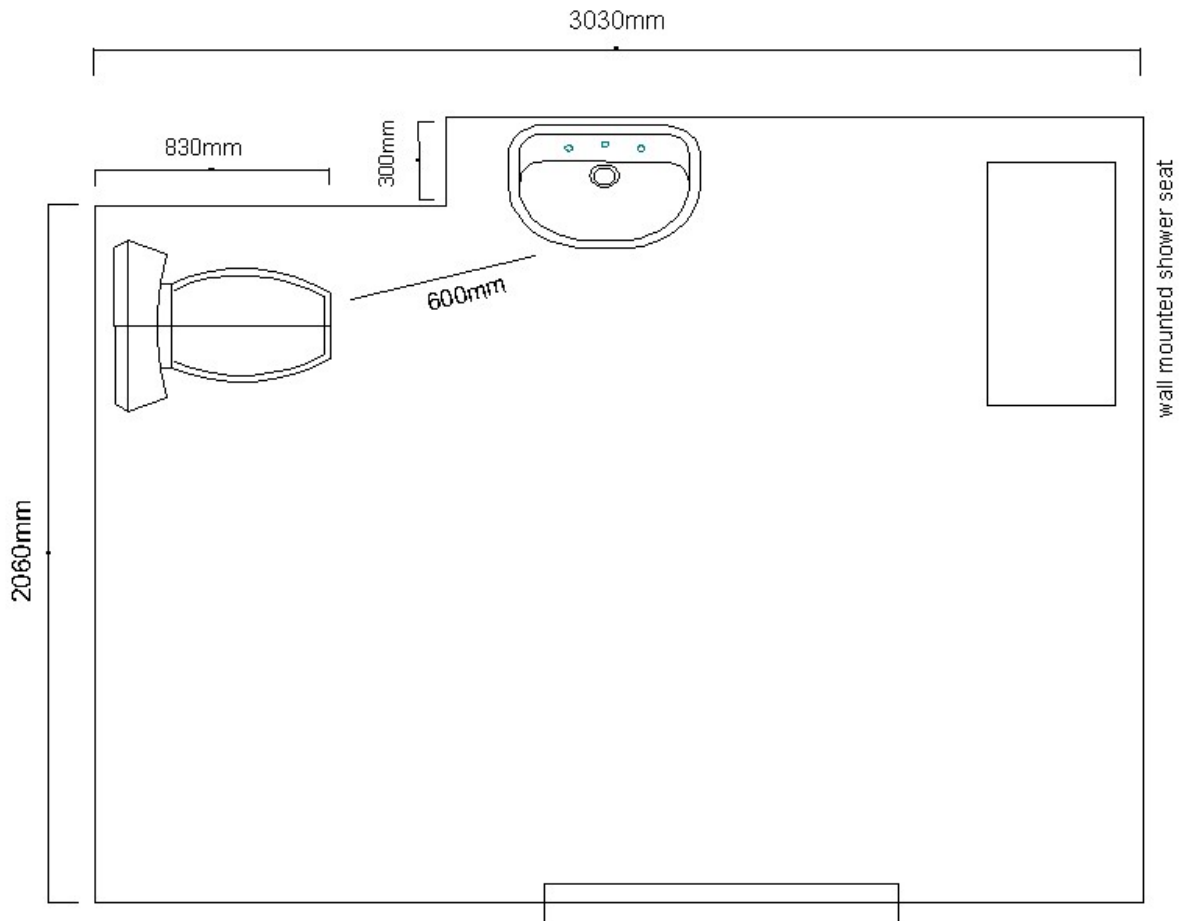
Door: 800mm wide swing door that is light to open. Has a D handle with a large lock.

Pan height: 480mm high.

Basin height: 760mm.

Shower: Hand held shower and wall mounted fold down seat.

Emergency call buttons: No



Room facilities:

- TV with remote control
- Lowered light switches
- The air conditioning controls are at a high standing height

Gusti:

This Restaurant is used for the buffet breakfast, lunch and dinner. It is located up seven steps from the bar / sitting area. Access for wheelchair users is via a wheelchair platform lift that is mounted to the stairs adjacent to the concierge desk. The platform size is 1000mm long and 770mm wide. Assistance is required to operate the lifting platform.

Access to the restaurant is then via a wide corridor leading to a 700mm wide door. The restricted space around the outside of the door restricts circulation space for larger style wheelchairs. The door opens directly into the restaurant in front of the buffet. The restaurant is spacious with sufficient circulation space for all styles of wheelchairs.

Breakfast is self serve from a 900mm high counter, requiring a 300mm side reach.

Tables are moveable and have a central pedestal and chairs have armrests.

Menu: Good colour contrast with 12 point font.

Accessible toilet: In order to access the public accessible toilet from Gusti Restaurant patrons will be required to use the stair lift platform, move through the foyer, past the lifts and access is off the corridor leading to the rear entrance.

Pool and gym:

Location: On level one, accessible via the lift.

Door: 750mm wide and requires key card access. There is a low external lever handle and a knob style internal handle. The door is heavy to open. There is standard gym equipment and access to the door is restricted to 720mm by the positioning of one large piece of gym equipment.

Pool: There is an outdoor lap pool which is accessed though the gym and a domestic style sliding door, with a lip of 60mm, to the outside. The pool is across a 1070mm wide wooden bridge that is accessed via a Perspex gate. The gate is 1200mm high and the latch, on the pool side of the gate, is set at 900mm high. The pool is accessed directly off the side or via a ladder.



Guest Laundry: Located on level one. The entrance door is 760mm wide. The laundry has sufficient internal circulation space to accommodate small to medium style wheelchairs. The washing machine is a top loader and the driers are at both sitting and standing height.

Information prepared for the City of Perth, December 2006.

Care has been taken to ensure the accuracy of this information however no guarantee is given that the facility is fully accessible.

Please advise the City of Perth of any access changes since publication.

This Report Template has been designed for use in the 'You're Welcome; WA Access Initiative' project only. It is not intended for any other purpose.

© Disability Services Commission 2005