

## **Emperor's Crown**

### **Summary:**

- Spaciously appointed value accommodation with public unisex accessible toilet and accessible queen size bedroom with en-suite bathroom.
- Passenger lift from entry foyer to all accommodation facilities
- Spacious communal kitchen.

**Name:** Emperor's Crown

**Location:** 85 Stirling Street, Perth

**Rating:** Value accommodation

**Telephone:** 9227 1400 or 0409 570 945

**Web:** [www.emperorscrown.com.au](http://www.emperorscrown.com.au)

**Accessible parking bay onsite:** No

**Drop off available:** No

### **Closest accessible public transport:**

- Perth Train Station
- Blue CAT stop 7, Beaufort Street

**Accessible public toilet onsite:** Yes

### **Accessible parking:**

- There is no designated accessible parking at the accommodation facility. Guests are however able to park at the rear of the building.
- A 7m long ramp connects the rear car park to a side entrance to the building. The gradient ranges between 1:8 to 1:11.
- Access into the building is via the rear door into the communal kitchen. There is a 1m long ramp with a gradient of 1:14 that leads directly up to the door. The door is 720mm wide, light to open, fast to close and has a lever handle.

**External access:** Level access off Stirling Street pedestrian footpath.

**Main entrance:** The entry door is 850mm wide and held open, suitable to accommodate wheelchairs of all sizes.

**Foyer:** Tiled entry foyer has step and ramp access to the reception desk and the passenger lift, which provides access to the remainder of the accommodation facility.

The wide pedestrian ramp has a 1m long lower section with a gradient of 1:20 and a change in direction to the upper section that is 3m long. There are no handrails on the ramp.

Lounge seating is provided in the foyer. The seats are soft with a seat height of 440mm.

**Reception:** Counter is at high standing height.

### **Restricted use passenger lifting platform:**

A passenger lifting platform is installed adjacent the reception counter and provides access to all other accommodation facilities. The platform size is 1000mm wide x

1500mm deep and is unlocked at all times for guest use. The lift has a load capacity of 400kg.

The lift is a walk through style. The top access door is half height and the clear open door width is 890mm. It is a manually opened door with a D handle. There is a press button to unlock the door.

The base door is full height with a D handle and an 890mm clear open width. Access into the lift may be restricted for some, as there is restricted space around the press button controls required to open the door.

The lift has a constant pressure push button switch to open the doors and operate the lift. The controls are black on grey. The controls range between 890mm and 1030mm high.

**Communal area:**

A large communal area is located between the reception foyer and the remainder of the accommodation facility. This general area includes numerous computers for internet access, tables, lounges, the unisex accessible toilet and a public telephone.

**Telephone:** Public telephone is wall mounted with knee access of 730mm. The telephone is coin operated with push buttons and adjustable volume control. Highest operable control is 110mm.

**Internet access:** Computers are provided on long desks with knee access of 620mm. Moveable chairs with armrests are provided.

**Signage:** All signage is clear, easy to read and in good colour contrast. Staff assist as required.

**Information:** A variety of brochures at varying heights are located throughout the facility.

### Accessible public toilet:

Location: An accessible toilet is located on the ground floor, adjacent the communal area.

Signage: The access symbol is located by the door.

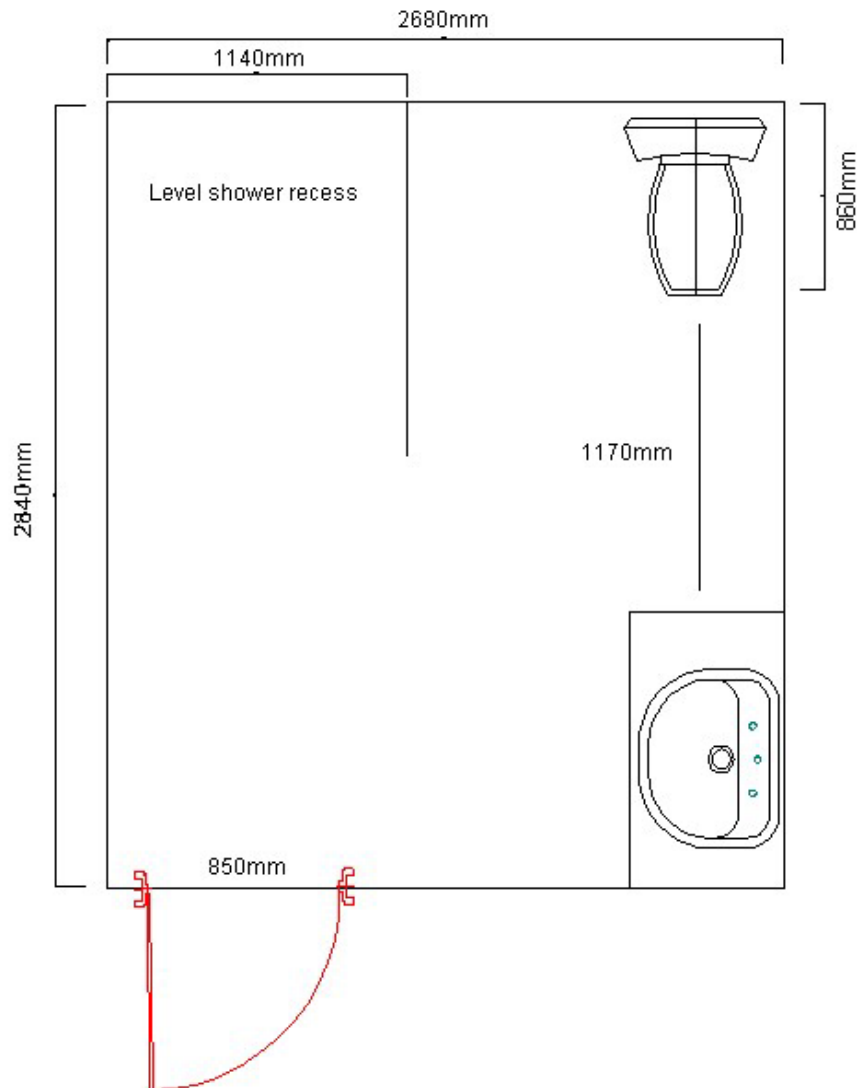
Door: 850mm wide with no door closer.

Lever handle with large snib.

Pan height: 460mm.

Basin height: 820mm

Lighting: Switch in cubicle at standing height.





**Accessible room:** There is one non-smoking, Queen size accessible room with en-suite bathroom, located on the ground floor.

**Emergency:** There are audible alarms in all rooms and an emergency exit is located directly opposite the room down a wide corridor. The external exit door is 840mm wide and there is a 60mm external step to the outside?

**Corridor to room:** Throughout the facility the corridors are wide and have low pile carpet, accommodating all wheelchair sizes.

**Accessible rooms:**

Door: The entrance swing door is 850mm wide, light to open with no door closer and has a lever handle. Access into the room is sufficient to accommodate wheelchairs of all sizes.

There is a peep hole at standing height. Access into the room is via a standard key. A key card is secured into the card reader at all times, and lights can be turned on and off by the guest as required. Light switches are at standing height.

Tea and coffee: The room has a bar fridge and a kettle can be provided, which can sit on top of the fridge (approximately 1000mm high). The power points are at floor level, but management can provide an extension lead.

A wardrobe is located next to the fridge and the hanging rack is at high standing height.

Bed: A Queen bed in the room is firm and 570mm high with 100mm available space under the bed to accommodate a mobile hoist. The room configuration can be changed to accommodate guest's needs. The room is spacious and should accommodate wheelchairs of all sizes.

**Bathroom:**

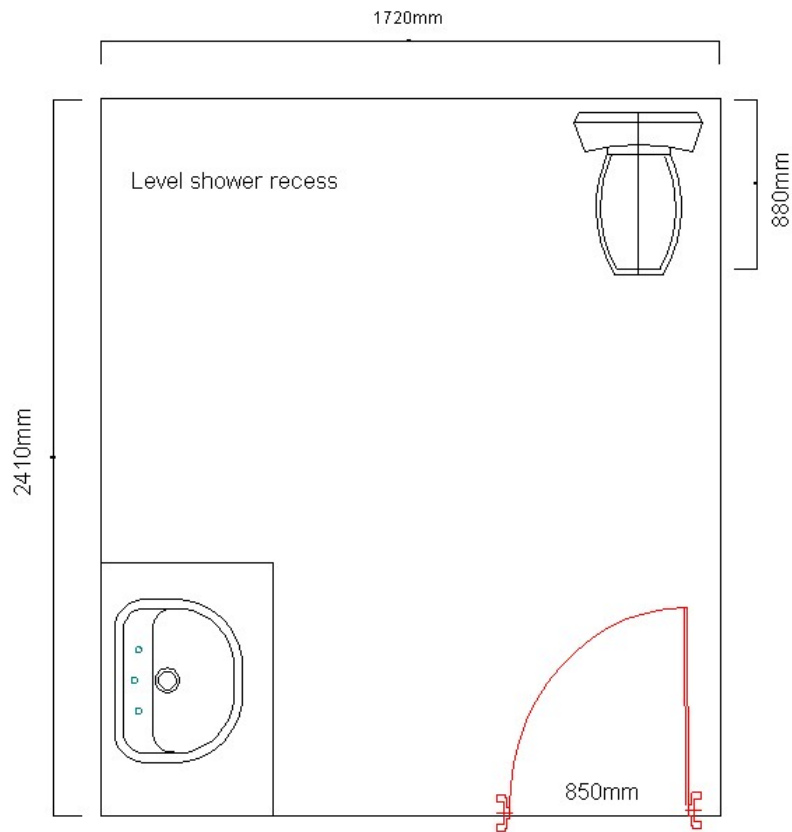
Door: 850mm wide swing door that is light to open. Lever handle with small snib.

Pan height: 440mm

Basin height: 810mm

Shower: Curtained level shower recess with hand held shower. Staff can arrange hire of shower chair or similar, as required.

Emergency call buttons: Nil



### **Room facilities:**

- High wall mounted TV with a remote control.
- Remote controlled air conditioning

### **Covered outdoor area:**

A covered outdoor area is located at the rear of the building, accessed off the internet area. There is a 750mm wide swing door and a 70mm step down to the concreted area.

### **Theatre room:**

The theatre room has a 760mm wide door swing door and the sofas are 420mm high without armrests.

**Guest laundry:** Located on ground level near the communal kitchen and accessible room. A small wheelchair could gain access to the laundry through a 750mm wide door that has restricted space around it due to a laundry trough being located adjacent the door. The laundry is long (galley style) with an external door at the far end that leads to the clothes line – there is a 70mm external step. An alternative access to the clothes line is via the kitchen. There are top loading washing machines and front loading drier at sitting height.

**Communal kitchen:** A communal kitchen is provided on the ground floor. Entry doors are wide and there is circulation space within the kitchen / dining area for medium to larger style wheelchairs.



The kitchen is a commercial style with open shelves under all work benches. Work bench is 920mm and the reach to the taps is 480mm. The gas stove top is 920mm high with controls on the side. The sink has a 650mm clearance underneath, 850mm wide.

There are pigeon holes for storage of dry goods, at sitting and standing heights, similarly the side by side commercial fridges have shelves at sitting to standing heights. The dining tables have a central pedestal with knee clearance of 680mm. Chairs with armrests are provided.

### **External Door:**

An external door at the kitchen provides access to the clothes line (as an alternate from the laundry), a sitting area and the ramp that leads to the rear car park. The door is 720mm wide that is light to open and fast to close and has a lever handle. An external ramp leads to the outdoor area. There is a 1m long ramp directly at the door that has a gradient of 1:14.

**Information prepared for the City of Perth, February 2007.**

**Care has been taken to ensure the accuracy of this information however no guarantee is given that the facility is fully accessible.**

**Please advise the City of Perth of any access changes since publication.**

This Report Template has been designed for use in the 'You're Welcome; WA Access Initiative' project only. It is not intended for any other purpose.