

Globe Backpackers

Summary:

- Two accessible rooms on the ground floor.
- One accessible bathroom adjacent to the rooms.

Name: Globe Backpackers.

Location: 561 Wellington Street, Perth.

Rating: Backpackers

Telephone: 08 9321 4080

Web: <http://www.globebackpackers.com.au>

Accessible parking bay onsite: No.

Drop off available: No.

Closest accessible public transport:

- Perth Train Station
- Red CAT stop 15, William Street
- Yellow CAT stop 28, William Street

Accessible public toilet onsite: Yes

Closest accessible parking:

- Queen's Complex (Wilson's Parking)
- His Majesty's Car Park (CPP) (4 bays)

Pick up / set down bay: There is a standard ¼ hour City of Perth set down bay around the corner in Queen Street.

External access: Access is directly off the Wellington Street footpath via a short ramp with gradient of 1:10. There is sufficient space to accommodate all wheelchair sizes.

Main entrance: The main door is very wide and held open.

There is a smaller alternative entrance, on the corner of Wellington Street and Queen Street, used for after hour access. The door is 850mm wide, has a lever handle and a 50mm external step. External access may be restricted to medium sized wheelchairs due to the door being set back from the footpath. There is an external small key pad set at 1300mm high.

Foyer: Low pile carpet, level throughout. Ample circulation space for all wheelchair sizes. There is a 1500mm ramp with a gradient of 1:10 leading from the main foyer to the door that enters into the accommodation block. The door is 910mm wide with a door knob on the outside and an internal lever handle. The keypad that enables access through the door is set at 1250mm high.

Lounge seating is provided in the foyer. The seats are firm, have armrests and a seat height of 360mm.

Reception: Counter is at high standing height.

Telephone: The public telephone is wall mounted, push button and adjustable volume control. The highest operable control is 1400mm and there is a fixed stool directly in front of the telephone.

Business Centre / Internet access: Computers are provided in the reception area on long desks. Desks are 700mm high with 690mm knee clearance. Chairs are office style, on castors.

Signage: There is no specific directional signage. Staff assist as required.

Information: A variety of printed information is available in the foyer at both sitting and standing heights.

Accessible public toilet:

This unisex accessible toilet is also the accessible bathroom.

Accessible rooms: There are two free standing accessible rooms, 22 and 23 in the rear courtyard adjacent to the accessible bathroom. Both rooms are designated as non smoking.

Emergency: There are audible alarms in both rooms. Access is directly into the courtyard between the swimming pool and the dining room.

Corridors to rooms: There is a corridor leading from the main entrance to the rear courtyard. The corridor is carpeted with an overlay of industrial rubber matting. Access is via an 850mm opening, a 1200mm corridor and an 810mm wide door. There is sufficient space for wheelchairs of all sizes to move through this area.

Accessible rooms:

Door: Door width is 830mm. The entrance swing door is self locking with a lever handle. Access into the room is via a standard key. There is sufficient space for wheelchairs of all sizes to move through into the rooms.

Bed: One bunk in each room. The bed is 400mm high with clear space below the mattress. There is approximately 1200mm space at the side of the bed.

Bathroom:

The bathroom is adjacent to the bedrooms and opens directly off the courtyard. There is 1200mm space outside the entrance, between the door and an external metal staircase. Door: 830mm wide swing door that is heavy to open. The door has a lever handle and a large snib.

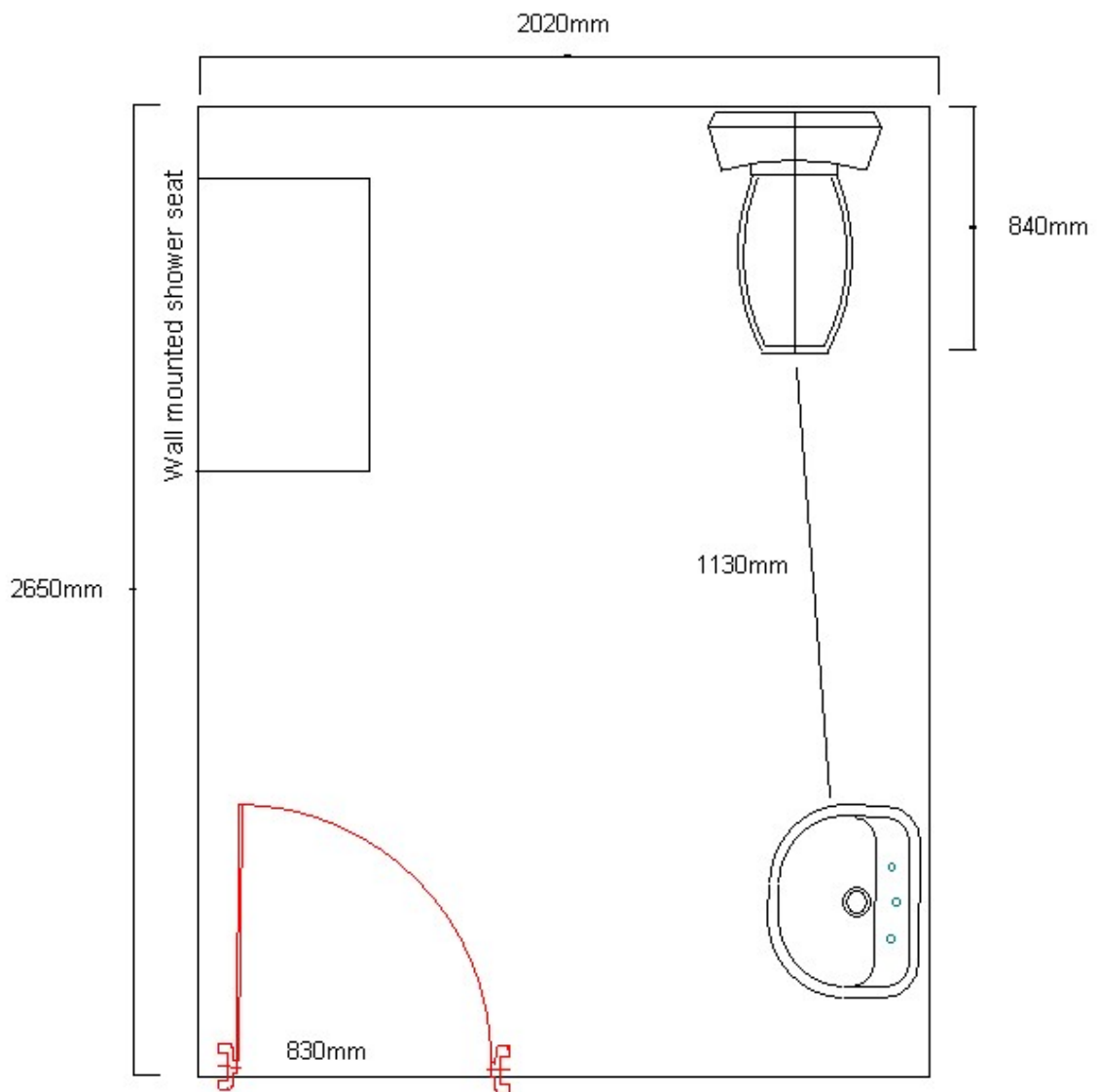
Pan height: 450mm.

Basin height: 750mm.

Shower: Hand held shower and wall mounted fold down seat.

Lighting: Sitting height.

Coat hook: sitting height.



Room facilities:

- TV at sitting height, no remote control
- Lowered light switches
- Remote controlled air conditioning



Pool:

Location: In the rear courtyard.

Gate: 880mm wide with a 1500mm high latch (in order to comply with safety requirements). There is 1200mm space inside the gate, between the gate and the steps into the pool.

Communal kitchen: A communal kitchen is provided on the ground floor. The entry off the rear courtyard is 800mm wide. There is sufficient circulation space, into and throughout the kitchen / dining area, for larger style wheelchairs.

The kitchen is a commercial style with open shelves under all work benches. Work bench is 900mm and the reach to the taps is 400mm. The gas stove top is 900mm high with a reach of 360mm to the front, side mounted controls.



The dining area has tables and single seats without arms. The tables are 750mm high with 700mm knee clearance.

Sitting Room: The sitting / TV room is off the kitchen through a wide opening. There are lounge chairs, 420mm high without armrests.

Guest Laundry: Located next door to the Backpackers off Wellington Street footpath. There is a 100mm step into the room, though a wide sliding door which is held open. The laundry has good internal circulation space, top loading washing machines and front loading, driers at sitting and standing height.



Information prepared for the City of Perth, February 2007.

Care has been taken to ensure the accuracy of this information however no guarantee is given that the facility is fully accessible.

Please advise the City of Perth of any access changes since publication.

This Report Template has been designed for use in the 'You're Welcome; WA Access Initiative' project only. It is not intended for any other purpose.

© Disability Services Commission 2005