

Hotel Bam'bu Backpackers

Summary:

- A contemporary, well appointed bathroom located adjacent the designated accessible room.
- One designated accessible room.

Name: Hotel Bam'bu Backpackers

Location: 75 / 77 Aberdeen Street, Northbridge

Rating: Backpackers

Telephone: 08 9328 1211

Web: <http://www.hotelbambu.com.au>

Accessible parking bay onsite: No.

Drop off available: No.

Closest accessible public transport:

- Perth Train Station
- Blue CAT stop 10, Aberdeen Street

Accessible public toilet onsite: No

Accessible parking: No

Pick up / set down bay: Pay ticket, verge parking outside the accommodation.

External access: Step ramp access from street footpath, suitable to accommodate all wheelchair sizes.

Main entrance: Manual swing door held open, 820mm wide.

Foyer: Tiled floor throughout. All communal facilities are located on the ground floor. Ample circulation space for all wheelchair sizes.

Low soft lounge seating is provided in the foyer (TV area). Bar stools are located at the bar / reception area.

Reception: Counter is at standing height.

Signage: No directional signage. Staff will assist as required.

Information: Brochures are provided in wall mounted displays.

Accessible room: One designated accessible room located on the ground floor (near the communal kitchen). Ensuite style bathroom adjacent.

Corridors to rooms: Corridor is wide, accommodating all wheelchair sizes.

Accessible room:

Door: Door width is 820mm. Access into the room is suitable for a smaller wheelchairs only due to restricted space around the bedroom door.

Bed: Double bed located in the accessible room. Access into the room may be restricted to smaller wheelchairs due to reduced space within the bedroom.

Bathroom:

Door (off external corridor): 800mm wide sliding door that is light to open. Has a D handle with large snib with sufficient circulation space around the door to accommodate all styles of wheelchairs.

Door (between bathroom and bedroom): 800mm wide swing door that is light to open. Has a circular door handle with large snib. There is restricted space on the bathroom latch side of the door which may restrict access to medium size wheelchairs.

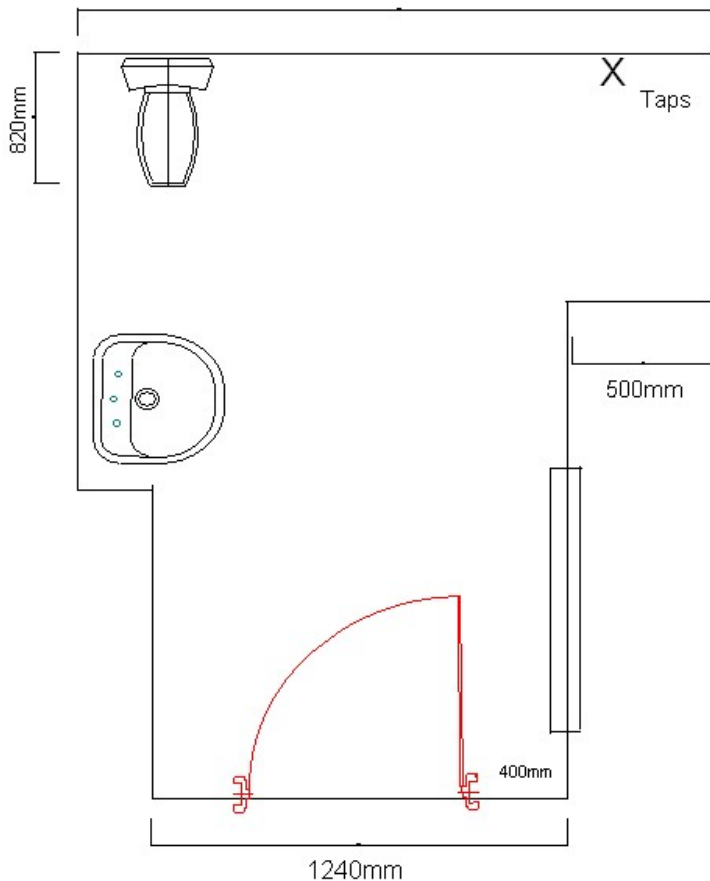
Pan height: 450mm high.

Basin height: 780mm.

Shower: Lever tap.



2100mm



Communal kitchen: A communal kitchen is provided on the ground floor. Entry door is 800mm. There is circulation space within the kitchen / dining area for a larger wheelchair.

The kitchen is a commercial style with open shelves under all work benches. Work bench is 960mm with knee clearance.

The gas stove top is 800mm high with controls located at the front of the stove.

The dining area has tables with 690mm knee clearance and chairs without armrests.



Information prepared for the City of Perth, December 2006

Care has been taken to ensure the accuracy of this information however no guarantee is given that the facility is fully accessible.

Please advise the City of Perth of any access changes since publication.

This Report Template has been designed for use in the 'You're Welcome; WA Access Initiative' project only. It is not intended for any other purpose.

© Disability Services Commission 2005