

Medina Executive Barrack Plaza

Summary:

- Three accessible apartments.
- A public unisex accessible toilet that can be accessed directly off the foyer and the adjoining BAR 138 on barrack.

Name: Medina Executive Barrack Plaza.

Location: 138 Barrack Street, Perth.

Rating: 4 star.

Telephone: (08) 9267 00000

Web: <http://www.medina.com.au>

Accessible parking bay onsite: Yes.

Accessible drop off available: No.

Closest accessible public transport:

- Perth Train Station
- Red CAT stop 14, Wellington Street
- Blue CAT stop 5, Barrack Street
- Yellow CAT stop 27, Wellington Street

Accessible public toilet onsite: Yes

Accessible parking: There is one accessible parking bay on ground level, lobby level, with vehicular access off Wellington Street. Overhead clearance at the vehicular entrance point is 2060mm with over 3000mm overhead clearance at the bay. The bay is 3200mm wide and 5440mm long.

Access into the foyer is through two heavy doors and a connecting corridor. The path of travel is suitable for small style wheelchairs due to restricted access around doorways and a change of direction required in a 1000mm wide corridor.



Pick up / set down bay: There is a standard 5 minute set down at the front of the hotel on Barrack Street with no kerb ramp to the footpath.

External access: Level access from the Barrack Street footpath to the hotel foyer, suitable to accommodate all wheelchair sizes.

Main entrance: Level access through wide, glazed, automatic sliding doors.

Foyer: Tiled and level throughout. Ample circulation space for all wheelchair sizes.

Couch style lounge seating, 320mm high with armrests is provided in the foyer. Alternative seats are 420mm high without armrests

Reception: Counter is at standing height. Portage is available to rooms.

Internet access: Internet access is provided in each apartment.

Signage: All available signage, including high directory boards, is in a black and white with a clear easy to read font. Staff will also assist as required.

Accessible public toilet:

Location: A unisex accessible toilet is located on the ground floor through a door adjacent to the reception. The toilets are available for day guests attending the conference and function rooms on level 2 and patrons of the BAR 138 on barrack located on ground level.

Signage: The door leading to the toilets is clearly signed with 'Rest Rooms'. The toilets have Braille and tactile raised signage on the wall beside the doors.

External door: 810mm wide and medium weight to operate and fast to close with a lever handle. Access is into a 1380mm wide corridor with sufficient circulation space to accommodate all styles of wheelchairs.

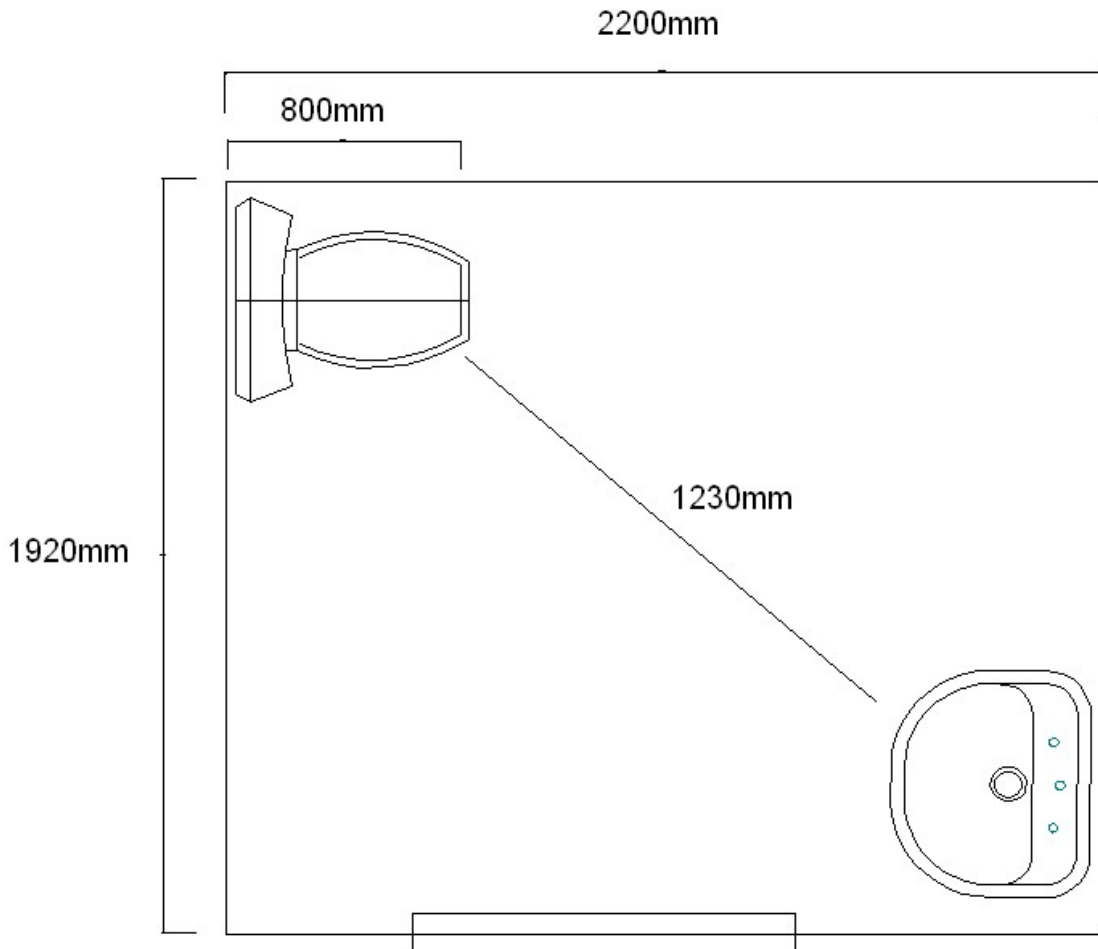
Toilet door: 820mm wide sliding door. D style handle with large snib.

Pan height: 450mm.

Basin height: 800mm.

Lighting: 950mm high light switch.





Lift: A bank of two lifts providing access to all floors.

Lifts are 1340mm x 2700mm, with a clear open door width of 990mm. Direction of travel information is displayed both externally and internally. There is a verbal announcement of the floor level inside and a tonal announcement outside. All buttons are within a range of 900mm - 1230mm high.

Accessible rooms: There are three identical accessible rooms within the hotel, located in a similar position on levels 3, 4 and 5. All rooms are designated as non smoking, and they do not have interconnecting rooms.

Emergency: There are audible alarms in all rooms and emergency egress maps are located behind the door at standing height. The fire stairs are approximately 12 metres along the corridor and have standard sized landings.

Corridors to rooms: Corridors are carpeted and wide accommodating all wheelchair sizes.

Accessible rooms:

Door: Door width is 900mm. The entrance swing door is heavy to open and fast to close, with a lever handle. Access into the room is suitable for all styles of wheelchairs. There is a peep hole in the door, 1410mm high. Access into the room is via a key card.

Kitchen: There is an open kitchen directly off the living area.

Benches are 920mm high with a power point 1120mm high located in the corner.

There is a gas hotplate at 920mm high with side controls.



Lounge: The lounge area has 360mm high, soft seating with armrests. Space around the furniture is restricted and it may need to be relocated to enable wheelchair access.

Balcony: There is a 630mm wide domestic style sliding door with an 80mm external lip and a 40mm internal lip leading to a small balcony.

Bedroom:

Door: 830mm wide door with a lever handle and sufficient space for wheelchairs of all sizes to move into the bedroom.

The room has a firm king sized bed that could be separated into two beds. The bed is on castors, it is 615mm high and there is 100mm available space under the bed to accommodate a mobile hoist. There is 1070mm space at the side of the bed.

Bathroom:

Door: 750mm wide sliding door that is light to open, has a D handle and a small locking device.

Pan height: 485mm high.

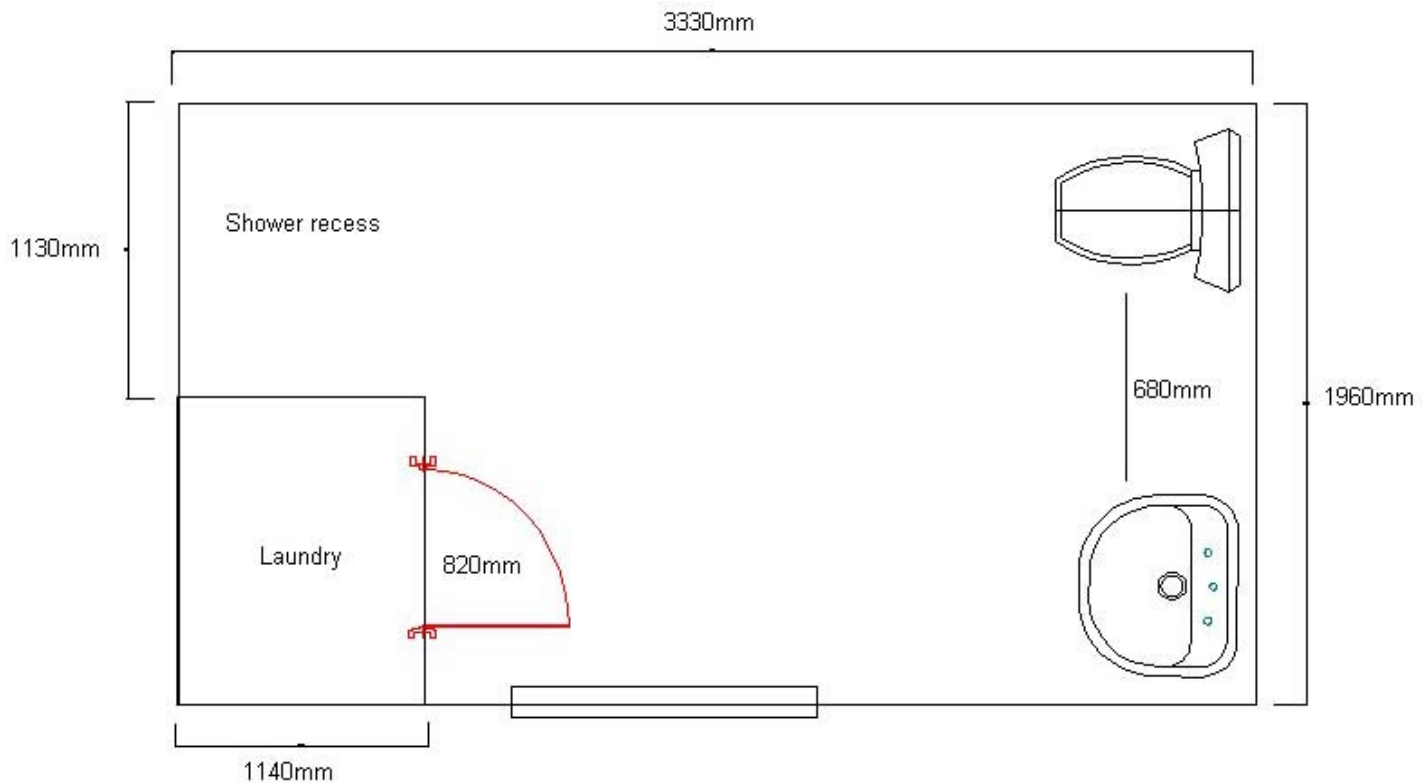
Basin height: 810mm.

Shower: Hand held shower and wall mounted fold down seat.

The hair dryer is located in the bathroom cupboard.



Laundry: A front loaded washing machine and wall mounted dryer are located within a cupboard inside the bathroom.



Room facilities:

- TVs are in the living room and bedroom
- Volume control telephones in the living room and bedroom
- Lowered light switches
- Wall mounted air conditioning controls

Conference Rooms:

The conference facilities are located on level 2 off a wide corridor and through wide double doors. Guest utilise the ground level accessible toilet.

Gym and Pool:

Location: Level 2.

Door: 1060mm wide with a lever handle directly into the gym that houses standard gym equipment.

Level access is available from the gym to the pool deck through a 775mm wide door. The deck houses seating and a barbeque and there is sufficient circulation space to accommodate wheelchairs of all sizes.

Pool: There are seven steps up to the pool.

Sauna: Located off the gym through a 640mm wide door.

Toilets and change room: Standard size toilets available.

BAR 138 on barrack

Opening hours:

Open seven days a week from 7am to late.

Telephone: (08) 9225 6388

Signage: Identification signage is large and easy to read from the street front.

External access: The café is directly off the hotel foyer with a separate wide open entrance directly off the Barrack Street pavement.

Entrance door: 830mm wide swing door with a D handle leading from the hotel foyer to the café.

Internal: Level access throughout and there is sufficient space for wheelchairs of all styles to access this facility.

Food counter: At sitting height, with food displays at sitting height.

Seating: A variety of seating is available ranging from stools, couches and moveable chairs that are 440mm high and have arm and back rests.

Menu: Table menus are in good colour contrast in a small serif font. The wall mounted drinks menu is large and easy to read, and has in good colour contrast.

Accessible public toilet: The ground level unisex accessible toilet can be accessed via an 810mm wide door from the café leading into the 1380mm wide connecting corridor. The entrance has sufficient space to accommodate wheelchairs of all sizes.

Information prepared for the City of Perth, February 2007

Care has been taken to ensure the accuracy of this information however no guarantee is given that the facility is fully accessible.

Please advise the City of Perth of any access changes since publication.

This Report Template has been designed for use in the 'You're Welcome; WA Access Initiative' project only. It is not intended for any other purpose.

© Disability Services Commission 2005