

Medina Grand Perth

Summary:

- A well appointed unisex accessible toilet is located on the ground floor, adjacent the reception.
- Eight apartments are accessible, all located on the first floor, with lift access to all floors.
- Accessible shower and toilet facilities provided adjacent the pool and gym.

Name: Medina Grand Perth

Location: 33 Mounts Bay Road, Perth

Rating: 4½ star

Telephone: 08 9217 8000

Web: www.medina.com.au

Accessible parking bay onsite: No.

Drop off available: Yes

Closest accessible public transport:

- Perth Busport
- Blue CAT stop 22, Busport

Accessible public toilet onsite: Yes

Closest accessible parking:

There is no designated accessible parking on site. The closest accessible parking is:

- Perth Convention Centre (CPP) (23 bays)
- Westralia Square (Wilson's)
- His Majesty's Theatre Car Park (CPP) (4 bays)

Pick up / set down bay: Vehicle drop off is available in front of the hotel (unmarked) - access off Mounts Bay Road. Parking outside the front of the hotel can be made by arrangement.

External access: Level access from drop off bay and pedestrian zone (linking Convention Centre) to the hotel foyer, suitable to accommodate all wheelchair sizes.

Main entrance: Level access through wide, glazed, automatic sliding doors.

Foyer: The foyer has a tiled floor and there is ample circulation space for all wheelchair sizes.

Lounge seating is provided in the foyer. The seats are firm with armrests and a seat height of 440mm.

Reception: Reception counter is at standing height.

Signage: All signage is clear, easy to read and in good colour contrast. There is directional signage to all essential services and each floor has a directory board, at standing height.

Information: Printed information produced by the hotel is in good colour contrast and an easy to read font.

Accessible public toilet:

Location: A unisex accessible toilet is located on the ground floor, opposite the reception desk.

Signage: There is directional signage to the accessible toilet.

External access: The foyer that leads to the toilets has dark walls and lighting is low.

Entrance door: 860mm wide that is heavy to operate. Lever handle.

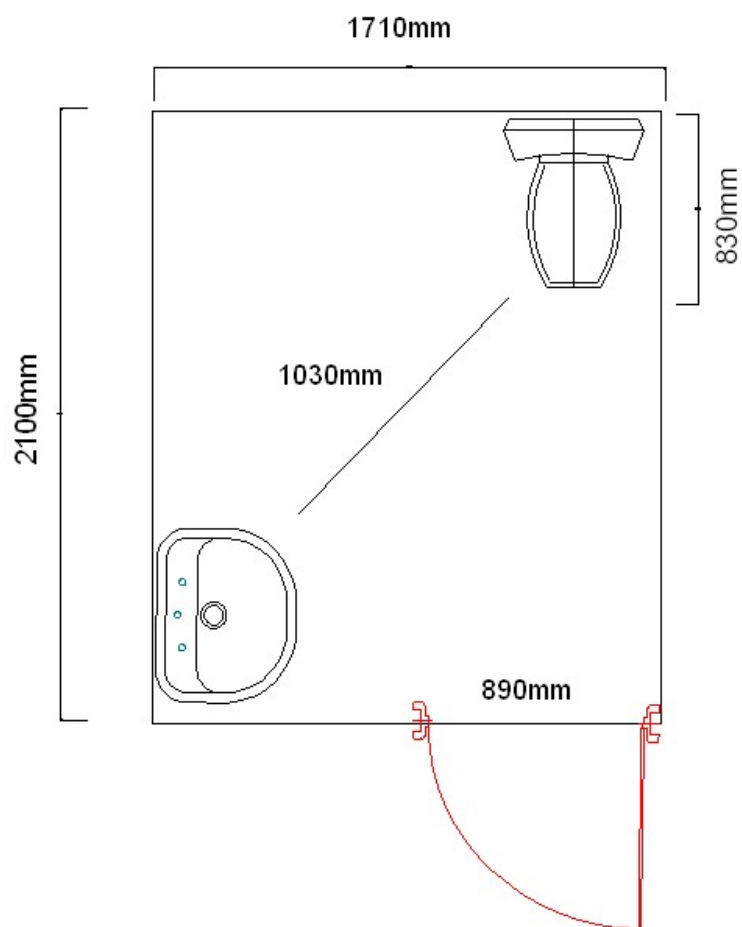
Toilet door: 890mm wide, heavy to operated, D style handle with large snib.

There is sufficient space to accommodate all wheelchair types.

Pan height: 470mm.

Basin height: 800mm.

Lighting: Lights are on at all times.



Lift: A bank of two lifts, each provides access to all floors, both are identical in size and layout.

Single entry lift 1380mm wide and 1900mm deep, with a clear open door width of 990mm. Direction of travel information is displayed both externally and internally, and there is a tonal announcement of the floor level both internally and externally. External control buttons are 1020mm high, and internal controls are up to 1270mm high. Controls have information in tactile and Braille .

Accessible rooms:

There are eight accessible rooms within the hotel, all are located on the non smoking first floor.

All rooms are one bedroom apartments and two of the rooms have the capacity to be connected to an adjoining room.

Emergency:

There are audible and alarms in all rooms. Emergency egress maps are located behind the room doors at a high standing height. The emergency stairs have a landing of standard size.

Egress from the eastern wing of the building is onto an external landing and a restricted use passenger lift provides access to the ground floor and a raised walkway.

Eastern wing exit to Busport

Guests are able to exit the hotel from the level one floor to a landing, restricted use passenger lift and a raised walkway that provides pedestrian access to the Busport.

This exit can also serve as a point of egress from the building in the case of an emergency.

Building door:

A push button control at 1290mm enables the guest to exit the hotel building, onto the eastern balcony.

To re-enter the building, the guest's key card is required. The key card slot is 1200mm high. Exit swing door is 840mm wide.

Restricted use passenger lift:

A passenger lifting platform is installed at the eastern end of the hotel.

The platform size is 1400mm wide and 1100mm deep. The passenger lift is kept unlocked and reception staff monitor the lift through a CCTV (thus assistance can be provided if required). The lift has a load capacity of 315kg.

The lift is a walk through style, with the 'upper' access door at half height. The clear open door width is 1090mm. the 'lower' opening of the lift has a safety lip which raises prior to the lift ascending or descending.

The lift has a constant pressure push button switch to open the doors and operate the lift. External controls are up to 1160mm in height and the internal controls are at 970mm. Push button controls are silver in colour.

Gate to raised walkway:

A 1000mm wide gate provides access from the hotel property to the raised walkway, leading to the Busport (south). Access to the north leads to a set of steps only. The gate

has a low, small, latch like handle and the hotel's key car is required to re-enter the hotel property. Key card is set at 1000mm. The gate does not self-close and has no pull handle.

Corridors to rooms: Corridors are wide, accommodating all wheelchair sizes, but are painted in a dark colour, reducing the lighting level. Corridors are carpeted.

Entrance door: Door width is 850mm. The entrance swing door is heavy to open and fast to close, with a lever handle. Access into the room is suitable for all wheelchair sizes.

There is a lowered peep hole and access into the room is via a key card.

Accessible facilities

Kitchen: The apartment has a kitchen which includes a fridge, wall oven at sitting height, microwave and an 870mm high bench with 740mm knee clearance. The reach to the corner power points is 700mm.

The dining area has a table with corner legs and 670mm knee clearance.



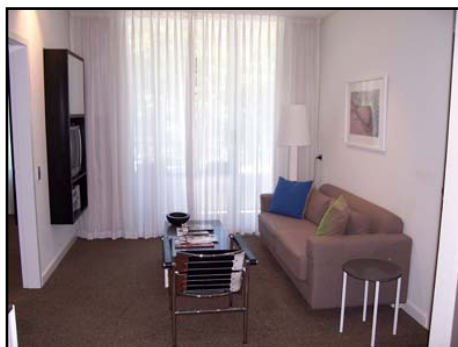
Lounge: Lounge seating is provided, seat height of 420mm, the seats are firm with armrests. Furniture is moveable.

Bedroom:

Door: 860mm wide swing door with a lever handle.

Bed: King bed (two singles) on castors, it is 500mm high and there is 75mm only available space under the bed to accommodate a mobile hoist. The bed is firm. Space next to the bed is 1200mm.

Desk: 830mm high desk with 800mm knee clearance. Broadband access is available.



Balcony: The room has a balcony that can be accessed via a domestic style sliding door with a 120mm lip both inside and out.

Bathroom:

Door: 860mm wide swing door with a lever handle and a medium sized snib located at a standing height.

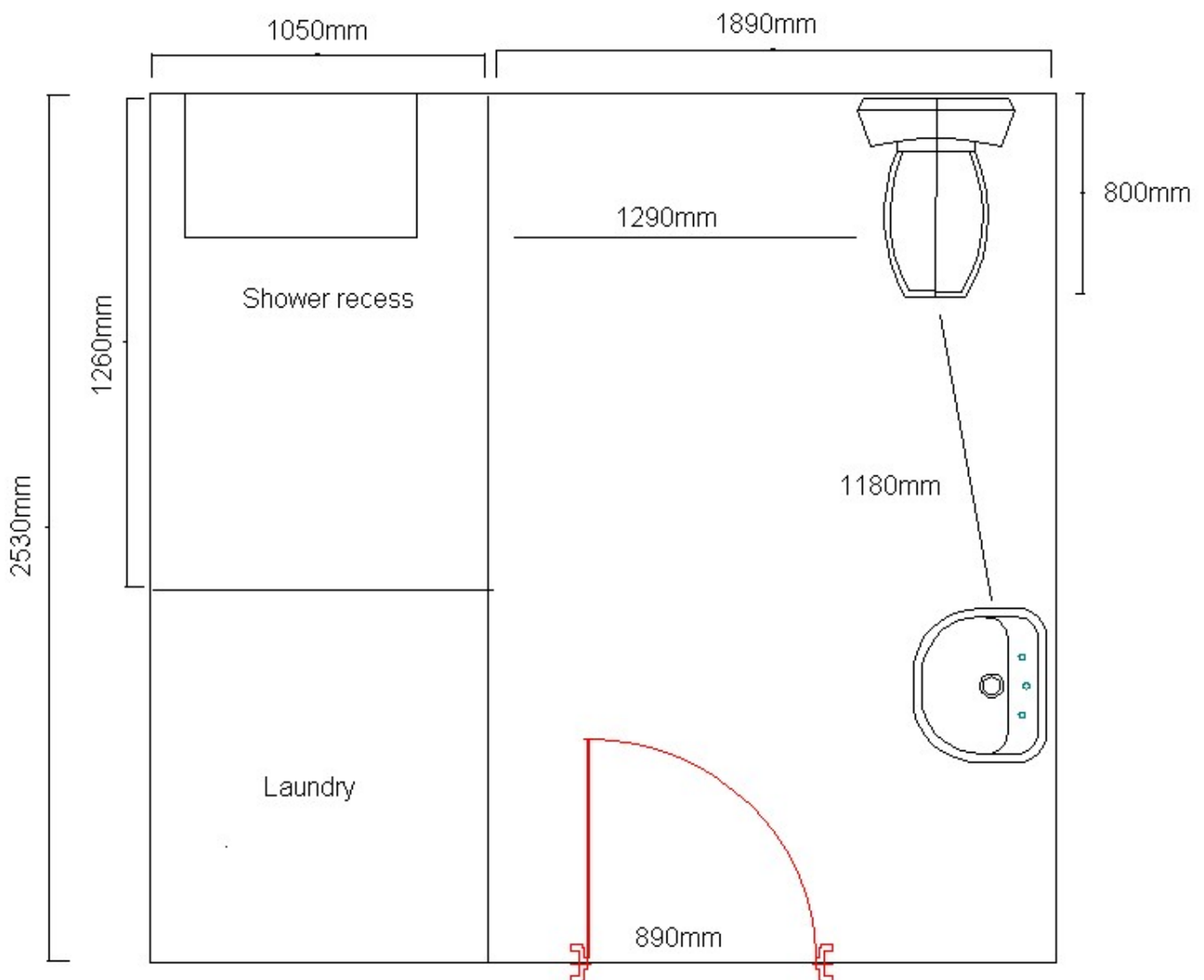
Pan height: 470mm

Basin height: 780mm

Shower: Level access shower with hand held shower and wall mounted fold down seat at 480mm high. The shower recess has a fully glazed swing door with D handle.

Emergency call button: Nil.

A shelf and coat hook is provided at sitting height



Laundry: A laundry cupboard is located within the bathroom. It comprises a front load washer at sitting height and a front loading drier at a high sitting height. The swing door is 610mm wide.



Room facilities:

- Remote controlled TV
- Lowered light switches
- Air conditioning control wall mounted, at sitting height

Metro Bar and Bistro:

The Metro Bar and Bistro is located within the hotel complex. It is open for breakfast, lunch and dinner and offers table service and café style indoor and alfresco seating.

Opening hours:

Breakfast	Monday to Friday: 7.00am – 10.00am Saturday & Sunday 7.30am – 10.30am
Lunch	Tuesday to Saturday 12noon – 3.00pm
Dinner	Monday – Saturday: 5.00pm – 10.00pm

Door: access to the bar and bistro from the pedestrian area or the foyer of the hotel is through a glazed pivot door that is 980mm wide and heavy to open with a D handle.

Internal: There is ample space to move through all areas of the bistro for all types of wheelchairs. The floor is tiled.

Bar: and payment counter: At standing height.

Seating: There is a range of seating styles including chairs, 450mm high without armrests. The tables have a central pedestal with 700mm knee clearance.

Menu: A table menu is provided in easy to read font in good colour contrast.

Accessible public toilet (Metro Bar and Bistro):

Location: A unisex accessible toilet is located at the rear of the bistro.

Signage: There is directional signage to the toilets.

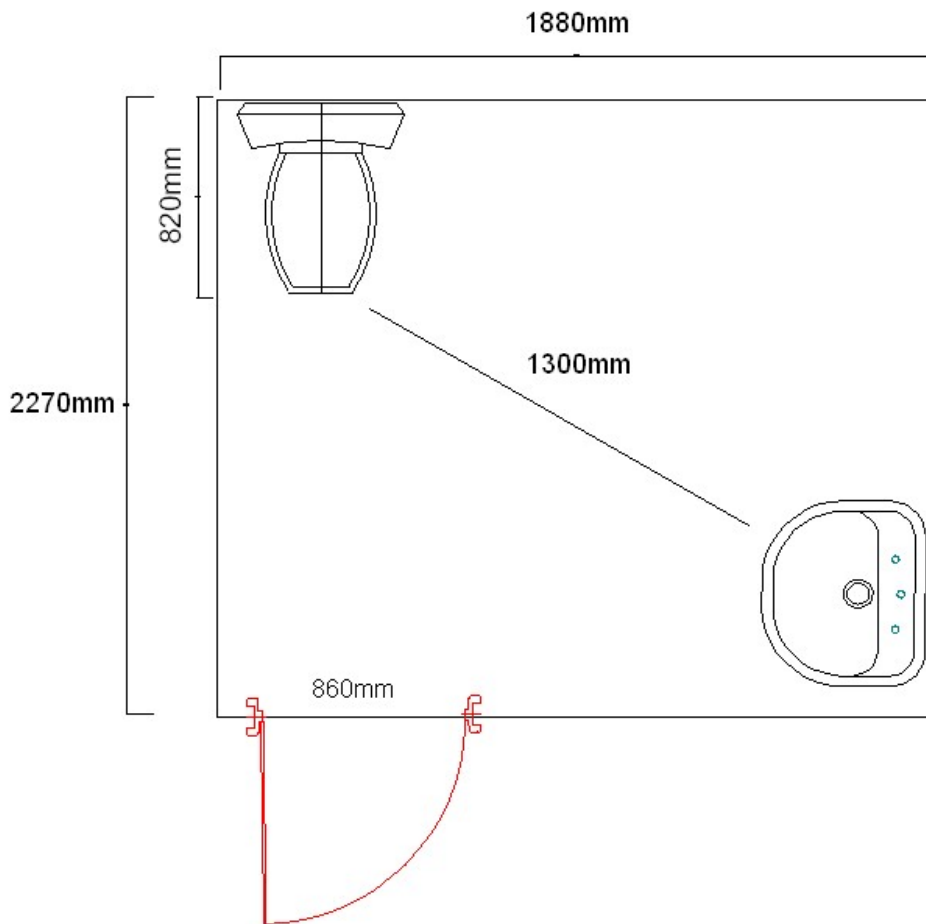
Entrance door: 850mm wide entrance door with an in-swinging door that is light to open and fast to close. The door has a D style handle. Access to the toilet may be restricted to medium size wheelchairs due to the corridor width (1120mm) and change in direction.

Toilet door: 860mm wide, heavy to operate and slow to close, D style handle with large snib.

Pan height: 460mm.

Basin height: 760mm.

Lighting: Lowered switch in cubicle.



Pool:

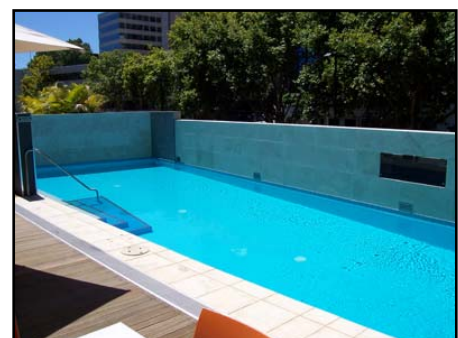
Location: At ground floor level, access from reception foyer.

Swipe card entry: 1180mm high.

Door: 980mm wide pivot door that is heavy to open.

Pool entry gate: A wide (1130mm) swing gate that pulls open. Gate opens to a wide ramp that leads up to the pool level. The ramp has a gradient of 1:17 over a length of approximately 8 meters. A handrail is located on the left hand side ascending.

Style: The pool is accessed by steps down, with a handrail on the left hand side descending.



Gym:

Location: At ground floor level, access from reception foyer.

Swipe card entry: 1180mm high.

Door: 980mm wide pivot door that is heavy to open.

Standard gym equipment is provided.

Accessible toilets and shower servicing the gym and pool:

A male and female accessible toilet and separate male and female accessible shower are provided in the corridor that leads to the gym and pool. The toilet and shower cubicles have an identical layout.

Signage: The toilets and showers are well signed, in good colour contrast. Signs include information in tactile and Braille formats.

External access: A wide corridor leads to the male and female accessible facilities.

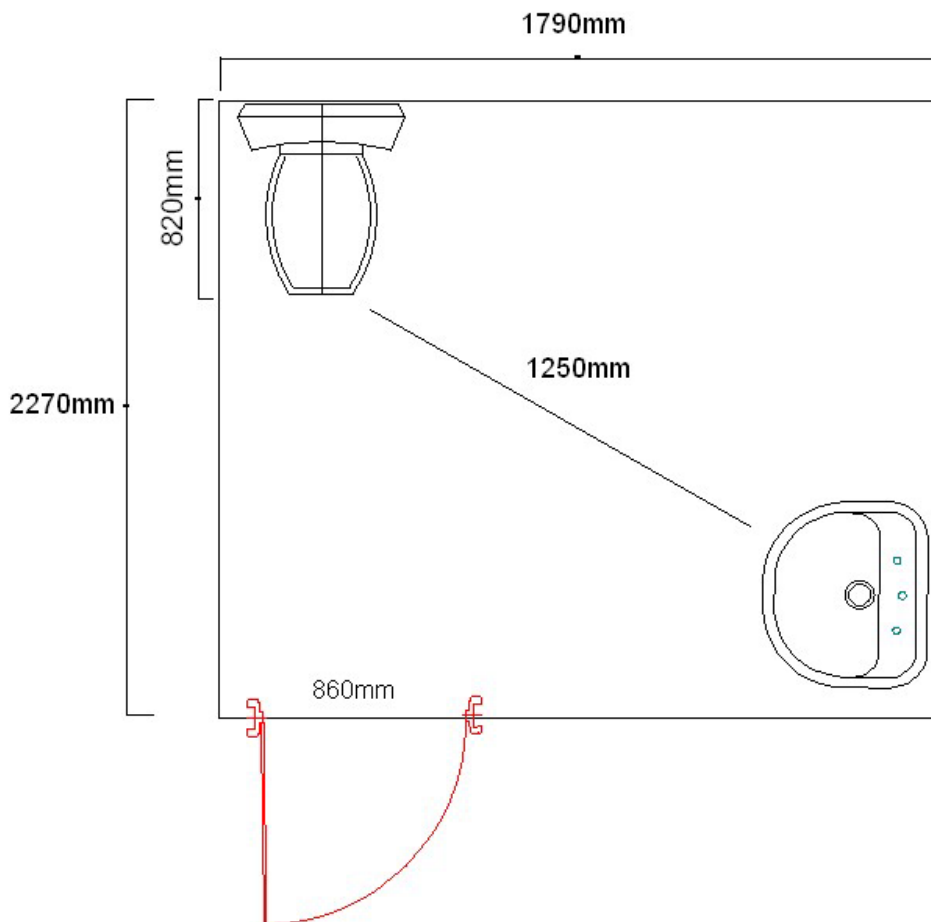
Toilet / shower door: 890mm wide swing door that accommodates wheelchairs of all sizes. Lever door handle with large snib.

Pan height: 460mm.

Basin height: 800mm.

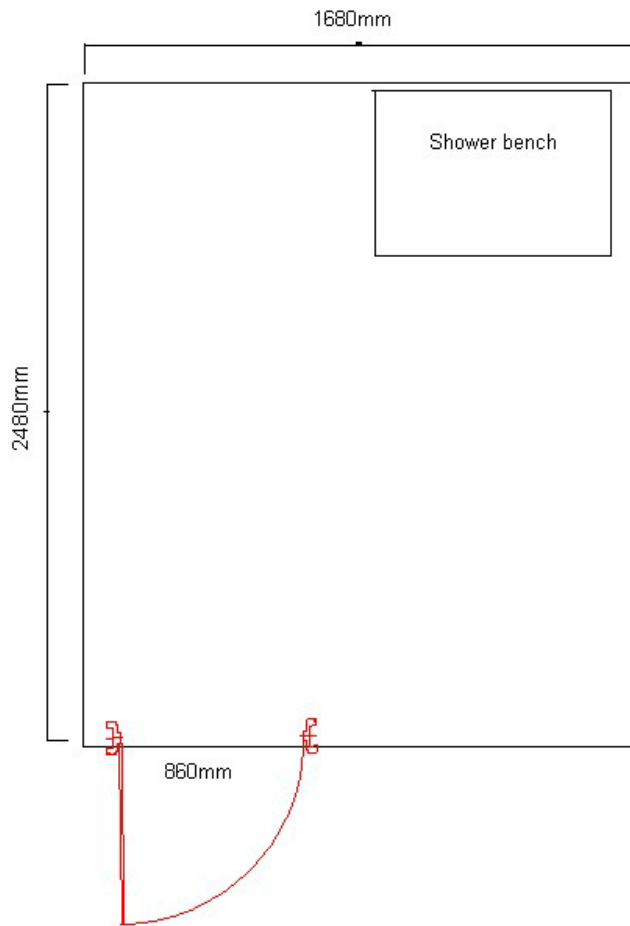
Lighting: Lights are on at all times.

Male and female accessible toilets:





Male and female accessible shower cubicle:



Information prepared for City of Perth, January 2007.

**Care has been taken to ensure the accuracy of this information however no guarantee is given that the facility is fully accessible.
Please advise the City of Perth of any access changes since publication.**

This Report Template has been designed for use in the 'You're Welcome; WA Access Initiative' project only. It is not intended for any other purpose.

© Disability Services Commission 2005