

Mercure Hotel

Location: 10 Irwin Street Perth

Accessible map reference: 0 12.

Summary:

- There is one wheelchair accessible room, located on the eighth floor, which is non smoking.
- An 'easy access room', which has larger than standard circulation spaces is located on the fifth floor, also non smoking.
- Pool, gym, spa area is not wheelchair accessible

Rating: 4 star

Web: <http://www.mercurehotel.com.au>

Closest public transport:

- Red CAT stops 12 & 13 on Hay Street

Closest accessible toilet:

- Onsite near main entrance

Accessible Parking:

Vehicle Access: From St Georges Terrace and Hay Street

Opening Hours: Open 24 hours

Cost per hour: \$15.00

Parking attendant onsite: The car parking facility does not currently have an attendant on site.

Valet Parking: Available (at the main entrance on Irwin Street)

Levels and number of accessible bays:

- Two bays on level one
- Located near the lifts
- 2400mm
- Level
- 2210mm overhead clearance; or
- 4160mm wide with 2290mm overhead clearance

Signage: No directional signage to accessible bays. The access symbol is displayed at the head of the bays



Pick up / set down bay:

Directly outside the hotel on Irwin Street. The drop off area is adjacent to a kerb. Access onto the footpath is via the car park exit driveway located at the rear of the drop off area.

There are two benches without backrests or armrests available on each side of the hotel entrance.

Valet parking: Valet Parking is available from this drop off area.

External access: The footpath, off which the hotel's main entrance is located, slopes down towards St George's Terrace. The footpath slopes up to the main entrance, and on the southern aspect of the footpath, this slope increases to a gradient of 1:9. There is sufficient space for wheelchairs to move through the external area.

Entrance door: Is 1420mm wide with double automatic sliding glass doors.

Foyer: The foyer is spacious and includes the Tonic Bar, a Guest lounge area with service phones, lounge seating, coffee tables and brochure displays. The foyer is carpeted and the lounge area has a wooden floor.

The lounge has soft lounge chairs without backrests (bench style), with a seat height of 460mm. Two secure Guest computers are provided at desks in the lounge. The desks are 730mm high and provide a knee clearance of 700mm. One pay phone is set at standing height, and a Guest phone, also at standing height is available for all hotel services (e.g. Concierge, room service).

Reception:

Reception desk is at a standing height. There is a portage available to guest rooms. The hotel has one wheelchair available to customers.

Accessible public toilet:

Location: On ground floor

Signage: No directional signage from main thoroughfare, but there is an access symbol on the door

Swing door, 780mm wide, heavy to open and fast to close

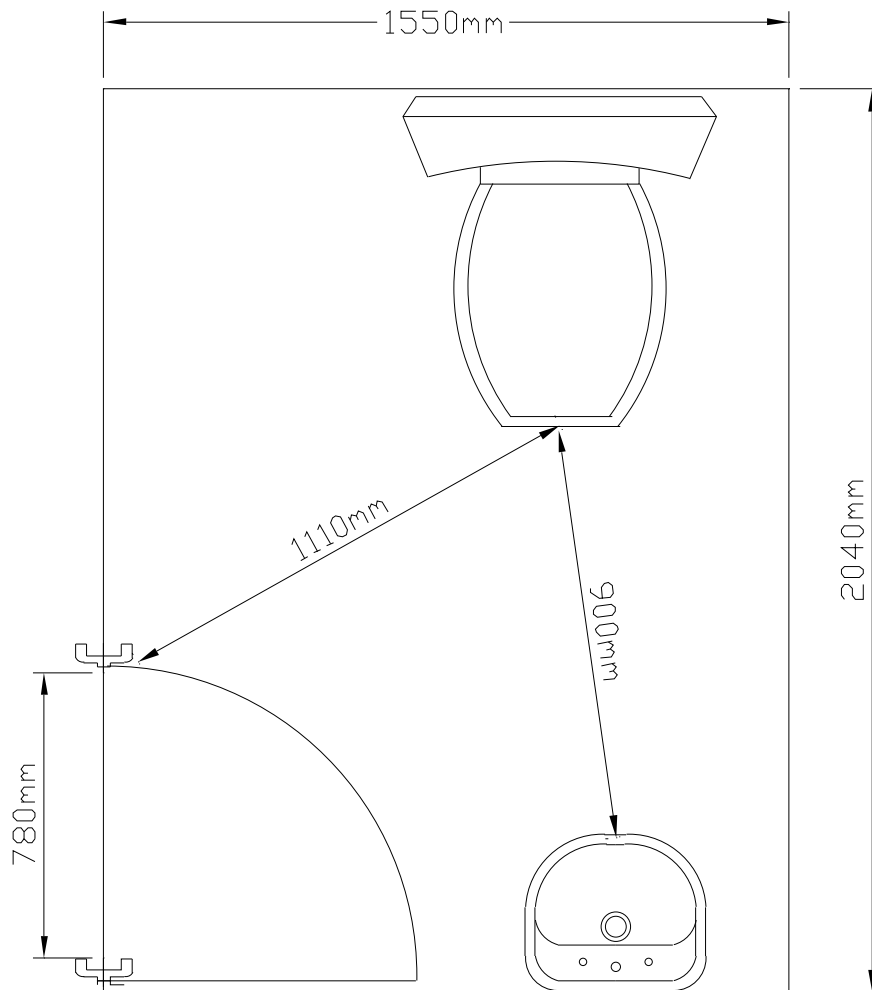
D-handle with large snib

Pan height: 440mm

Basin height: 770mm

Lighting: On at all times.





Lifts

West Tower Lifts

Location: Bank of two lifts located closest to the main reception desk of the hotel.

Levels serviced by lifts:

- Basement (car park)
- Ground Floor- lobby, reception, Tonic Bar, Restaurant Ten and the Hydrant Bar
- Level One - Function Facilities
- Level Three - Guest laundry
- Level Four to Eight - Guest rooms

Directional Signage: There is directional signage to the lifts with good colour contrast in easy to read large font.

Single entry lift, with internal dimensions of 1430mm x 1200mm. Clear open door width of 920mm. External controls are located in the center of the two lifts with a height of 1170mm, a rubbish bin directly below the controls may obstruct access. Controls illuminate when pressed and have information in tactile and Braille formats. The numbers on the controls may be difficult to read as they have silver text on silver buttons. Two sets of internal controls at 1200mm. The lifts have an external tone and internal verbal announcement.

East Tower Lifts:

Location: Bank of three lifts located further from the main reception desk of the hotel, close to Restaurant Ten.

Levels serviced by lifts:

- All levels of the hotel

Signage: There is no directional signage to the lifts.

Single entry lift, with internal dimensions of 1430mm x 1200mm. Clear open door width of 920mm. External controls are located in the center of the two lifts at a height of 1170mm, a rubbish bin directly below the controls may obstruct access. Controls illuminate when pressed and have information in tactile and Braille formats. The numbers on the controls may be difficult to read as they have silver text on silver buttons. Two sets of internal controls at 1200mm. The lifts have an external tone and internal verbal announcement.

Single entry lifts, with internal dimensions of 1320mm x 1290mm. Clear open door width of 930mm. External controls are 1170mm high. Internal controls are 1130mm to 1190mm high, with information in tactile with Braille formats. The

buttons illuminate when pressed. There is visual information both externally and internally. There is an external tone and an internal announcement.

Accessible Rooms:

Location: One accessible rooms located on the eighth floor. This is a non smoking room.

Emergency: There is an audible alarm in the accessible room only. The evacuation plan is located on the rear of the door, at standing height.

Path along corridor to room: The corridor is wide and clear of obstructions. The floor is carpeted. There is sufficient space for all styles of wheelchairs to move throughout the corridor.

Room Door: The 740mm wide manually opened in-swinging door is heavy to open and fast to close with a lever handle. The door is accessed with room key card and has a peephole that has a height of 1540mm (standing height). The door is locked with a large snib. There is no clearance on the internal latch side of the door, the tea/coffee facility and bar fridge are set into this corner of the entry hall.

Lighting: Is controlled by a switch internally at a height of 1320mm.

Tea/Coffee: These facilities are set into the internal corner of the entry hall of the room. The facilities are set behind a roll down door, are at sitting height, but may be set back against the wall. A bar fridge is located under the tea / coffee making recess.

Lounge: There are two deep, soft lounge chairs available with a seat height of 400mm with armrests and backrests. There is a writing desk at a height 740mm with knee clearance of 630mm, and chair with a seat height of 470mm.

Bedroom:

The room has two firm single beds on castors, which can be pushed together or left apart, depending on the needs of the guest. Under bed clearance is 120mm. The room is spacious and would be suitable for all types of wheelchairs to be moved through.



Bathroom:

Located off the entry hall, which is 1250mm wide.

Bathroom door: An in-swinging, 770mm wide manually opened door which is light to open and fast to close. The door has a circular door handle.

Pan height: 460mm

Basin height: 870mm

Lighting: Controlled by an internal switch, at a height of 1310mm.

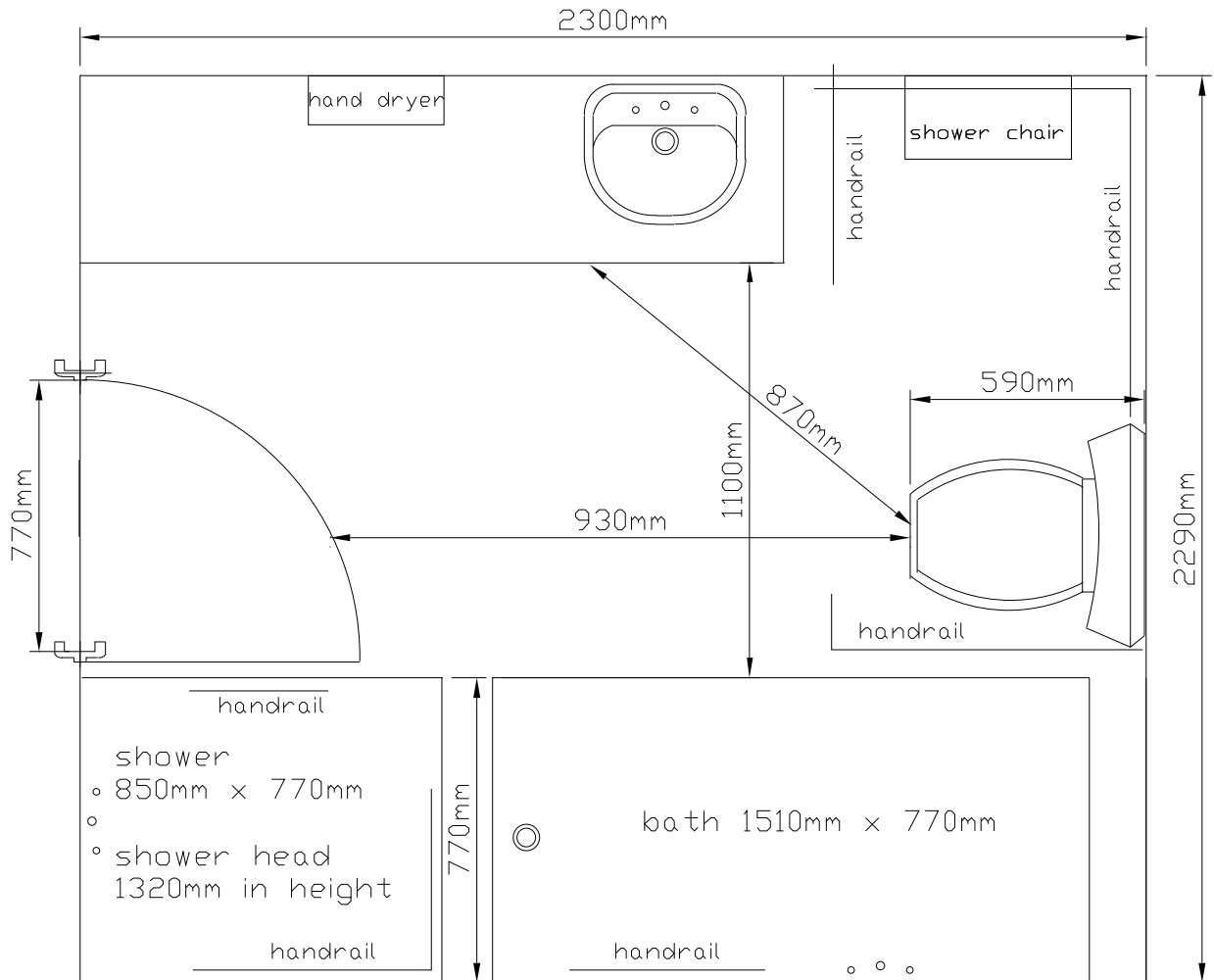
Shower recess: A fixed height shower chair with arms is provided in the small (770mm wide), level access, shower recess. It has a fixed seat height of 470mm. In addition, is a shower chair that attaches to the grab rail in the shower recess. When in situ it has a seat height of 400mm and a seat width of 340mm.



Shower chair that can be hung in the shower recess



Bathroom Plan



Room facilities:

- The television is Teletext enabled.
- TV guide is difficult to read due to the small print.
- Volume controlled telephone
- In house information is in good colour contrast
- Double sliding wardrobe that is light to slide, clothes rack is at a high standing height
- Iron and towels are at a sitting height.

Restaurant / Café:

Tonic Bar:

The Bar opens onto the hotel foyer. Bar / payment counter is at standing height. Circulation space is good at the bar. The bar has moveable bar stools, swivel chairs and lounges with armrests at coffee tables. The tables are moveable and have a central pedestal. Table menus are in good colour contrast although the print is less than a12 point font. The bar is well lit.

Restaurant Ten:

Located near the East Tower Lifts. There is no directional signage to the restaurant. The restaurant has table service and formal dining. Payment counter is at a high standing height, staff are available to assist. Tables are moveable, with a central pedestal; chairs have armrests. Menus are in good colour contrast, with a large, easy to read print. The restaurant is well lit.

Hydrant on Hay:

The main entrance is off Hay Street. Access from within the hotel is via a flight of nine steps with handrails. There is no directional signage to either entrance of the bar/café from the hotel foyer. The restaurant has table service, counter service, takeaway, a bar, café and alfresco style eating area.

The main entrance is off Hay Street is level, wide and the doors are held open. The café has moveable chairs and tables and seating areas include the bar, at individual bar tables and café style seating.

Food displays are easy to see from a sitting height, though some names written on display glass may be difficult to read due to reflection off the glass. A handwritten blackboard displays wine specials.

Bar / payment counter is at high standing height. Staff are available to assist. It is well light and also receives natural light from large alfresco doors.

Guest Laundry:

Is located on level three, accessible from the West Tower Lifts. It is open from 7.00am to 10.00pm. There is directional signage to laundry that is grey on silver. The laundry is locked and can be only accessed with a room key card. The door width is 760mm with sufficient space for all types of wheelchairs to move through internal area. The laundry has a top and front loader washing machine.

Gym / Pool / Spa:

Are located on the thirteenth floor and are only accessed by a flight of stairs.

Who to contact:

Name: Roslyn Smith

Position: Front Office Manager

Phone: 9326 7000

Street Address: 10 Irwin Street Perth.

Email: H1754-FO01@accor.com

Information prepared by: Occupational Therapy students from the School of Occupational Therapy at Curtin University of Technology, 2005.

Care has been taken to ensure the accuracy of this information however no guarantee is given that the facility is fully accessible.

Please advise the City of Perth of any access changes since publication.

This Report Template has been designed for use in the 'You're Welcome; WA Access Initiative' project only. It is not intended for any other purpose.

© Disability Services Commission 2005