

## **Mont Clare Boutique Apartments**

### **Summary:**

- Five well appointed spacious, accessible apartments.
- Designated accessible parking for all apartments.
- Audible and visual emergency alarms in the accessible apartments.

**Name:** Mont Clare Boutique Apartments

**Location:** 190 Hay Street Perth

**Rating:** 4½ Star

**Telephone:** 08 9224 4300

**Web:** <http://www.montclareapartments.com>

**Accessible parking bays onsite:** Yes

**Accessible drop off available:** No

### **Closest accessible public transport:**

- Red CAT stop 10, Hay Street

**Accessible public toilet onsite:** Yes

**Accessible parking:** Four bays are designated as accessible. There is 2320mm overhead clearance at the entry to the car park.

Access from the car park to reception is through a wide (960mm) automatically controlled sliding door that is proximity card activated. Proximity card sensor is located at sitting height (1100mm).

Main bay (adjacent reception): 2950mm wide. 2920mm overhead clearance.

Bay 54: 2400mm wide. Including the space adjacent the bay, the width is 3400mm. Overhead clearance of 2430mm.

Bay 74: 2460mm wide, with ample space adjacent to the bay.

Overhead clearance of 2330mm at the entry to the bay, ample overhead clearance for the remainder of the bay.

Bay 32: 3600mm wide. 2470mm overhead clearance.

**Pick up / set down bay:** Standard 15minute parking bays are located at the front of the building. No kerb ramp access to pavement.

**External access:** Access into the apartments is via a set of four steps, alternatively a level walkway that meets with the downward slope of Hay Street. This entry is suitable to accommodate wheelchairs of all sizes.

**Main entrance:** Level access through wide, glazed, automatic sliding doors.

### **After hours entry:**

Checking in: The reception desk is staffed:

Monday - Friday 8.30am - 5.30pm

Saturday, Sunday and Public Holidays 8.30am - 2.30pm

Guests due to arrive outside of the open hours will be advised of the after hours access procedure. The controls for the externally located Lock Box are set at 1240mm.

After hour's access:

- After hours proximity card reader at sitting height (1180mm)
- Key pad to call apartments after hours at standing height (1400mm)

**Foyer:** The foyer has a tiled floor and it is level throughout. Ample circulation space for all wheelchair sizes. Lounge seating is provided in the foyer. The seats are soft with a seat height of 480mm.

**Reception:** The entry door to the reception is 760mm wide. The counter is at standing height.

**Signage:** There is minimal directional signage. Room numbers are clearly indicated with large font in good colour contrast. Staff are available to assist as required.

**Information:** Printed information produced by the hotel is in good colour contrast and an easy to read font.

### **Accessible public toilet:**

Location: An accessible toilet is located on the ground floor.

Signage: There is directional signage to the accessible toilet.

Door: 950mm wide and a medium weight to operate. The door is fast to close.

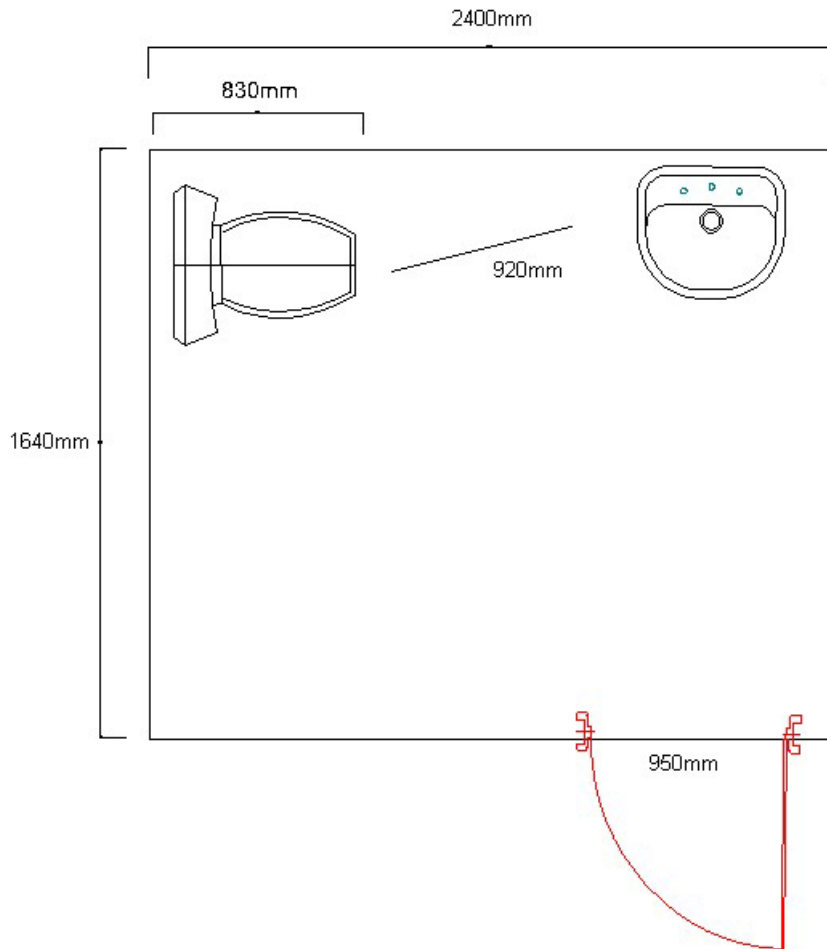
Lever style handle with small locking snib.

Pan height: 480mm

Basin height: 830mm

Lighting: Low switch located in the cubicle.





**Lift:** The lift provides access up to level five. Level six pool and gym is accessed by stairs only.

The lift is 1730mm wide and 1240mm deep, with a clear open door width of 900mm. Direction of travel information is displayed both externally and internally. There are no audible announcements of floor level either internally or externally. All buttons are lower than 1400mm, have good colour contrast and illuminate when pressed. The external proximity card reader is set at 1100mm high.

**Accessible rooms:** There are five accessible apartments. All are non smoking:  
Rooms 18, 31 and 44: 2 bedroom apartments, with identical layout. The only differences are the bed configurations.

Rooms 47 & 59: One bedroom apartments with a similar layout to the 2 bedroom apartments. Bathrooms have the same layout.

**Emergency:** There are audible and visual flashing alarms in all apartments. Emergency egress maps are located behind the door at standing height. The fire escape stairs have a standard size landing.

**Corridors to rooms:** Corridors are wide, accommodating all wheelchair sizes.

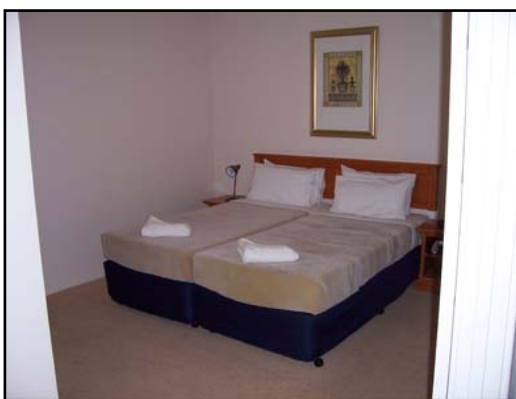
**Accessible apartments:**

Door: Door width is 750mm. The entrance swing door is a medium weight to open and fast to close, with a lever handle. Access into the room is suitable for wheelchairs of all sizes. Access into the room is via a standard key.

**Kitchen:** The kitchen bench height is 900mm. The electric cook top has side controls with a reach of 240mm to the front controls. Reach of 600mm to the power point. A combined washer/drier is provide in the kitchen.



**Lounge:** Sofa chairs with a soft seat, 470mm high, are provided in the lounge area.



**Bedroom:** A split King bed is provided in the bedroom. It is on castors, is 570mm high and there is 100mm available space under the bed to accommodate a mobile hoist. Entry to the bedroom is through a wide door. The wardrobe has hanging space at a high standing height and shelves are provided.

**Balcony:** There is a balcony, with a standard domestic sliding door and small step down.

**Bathroom:**

Door: 840mm wide sliding door that is light to open. Has a recessed door handle with no locking device.

Pan height: 470mm

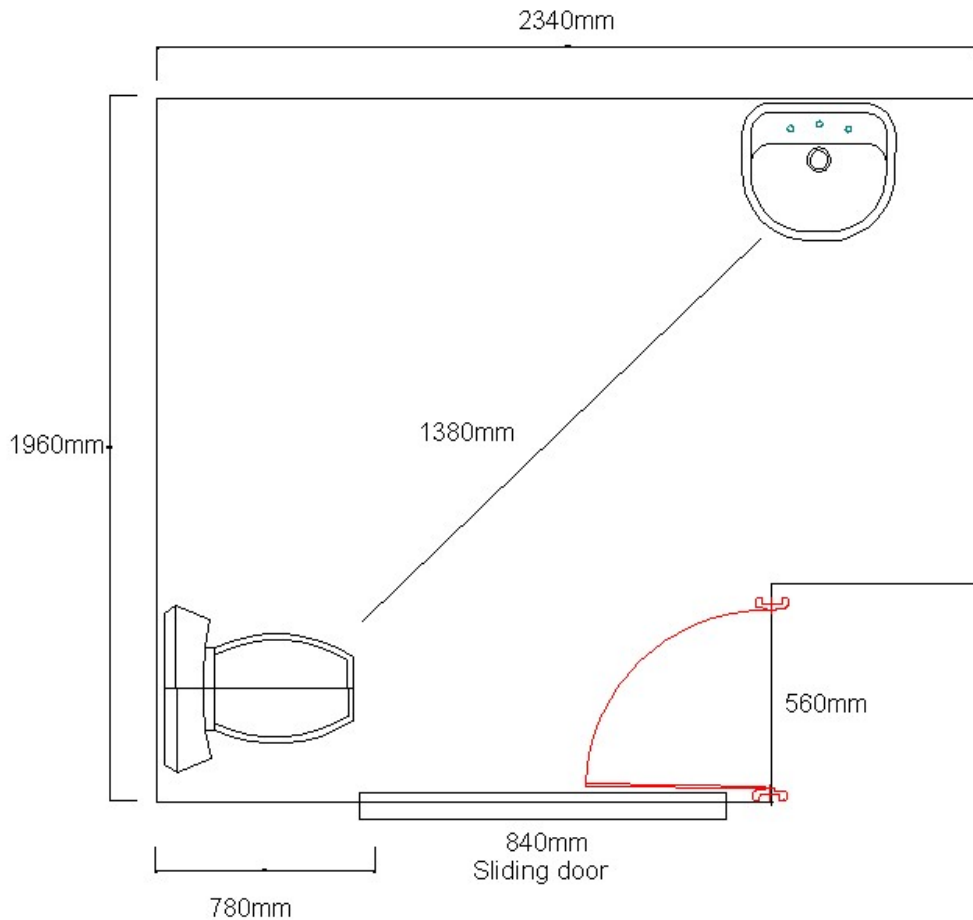
Basin height: 880mm

Shower: Hand held shower hose, choice of two shower chairs.

Other: Hair drier is provided to guests on request.

Lighting: Lowered light switch is located in the bathroom.





**Room facilities:**

- Remote controlled TV
- Lowered light switches
- Remote controlled air conditioning
- Intercom is set at a high standing height (1600mm)

**Pool and Gym:**

Location: On the sixth floor of the hotel. Accessible only via two flights of stairs.

**Information prepared for the City of Perth, March 2007.**

**Care has been taken to ensure the accuracy of this information however no guarantee is given that the facility is fully accessible.**

**Please advise the City of Perth of any access changes since publication.**

This Report Template has been designed for use in the 'You're Welcome; WA Access Initiative' project only. It is not intended for any other purpose.