

## **Mounts Bay Waters Apartment Hotel**

### **Summary:**

- Spacious one bedroom apartment located on the first floor.
- Accessible toilets are located on the ground floor, serving the Courtside restaurant.

**Name:** Mounts Bay Waters Apartment Hotel

**Location:** 112 Mounts Bay Road, Perth

**Rating:** 4½ star

**Telephone:** 08 9213 5333

**Web:** <http://www.mounts-bay.com.au/>

**Accessible parking bay onsite:** Yes

**Drop off available:** No

### **Closest accessible public transport:**

- Blue CAT stop 21, Mounts Bay Road

**Accessible public toilet onsite:** Yes

**Accessible parking:** One accessible bay is located on the basement level of the undercover parking. The bay is 2860mm wide, which is inclusive of two concrete pillars located at the head and rear of the bay. Overhead clearance is 2220mm to the roof, with some sections 2070mm due to pipe work.

Overhead clearance at the car park entrance is 2000mm.

A lift provides access to all floors, including the reception foyer. Access to the lift from the car park is via a 1000mm ramp with gradient of 1:7. The swing door to the lift lobby has a width of 760mm and is opened with a swipe card. A rocker switch is depressed to exit the lift lobby to gain access to the car park. Both security controls are located at standing height



**Pick up / set down bay:** There are standard bays only located along a central driveway. There are no kerb ramps to the adjacent pavement.

**External access:** Access to the hotel is via a flight of eight steps with a handrail on the left hand side ascending. Alternatively, access is up a 14m long driveway that has a

variable gradient of 1:6 to 1:9. Access to the hotel reception is through the basement car park and an interconnecting door to the rear of the reception area.

**Main entrance:** Access to the reception is via automatic sliding doors off the tennis court / pool area or via a manual swing door from the car park.

**Foyer:** Reception foyer is tiled throughout and there is ample circulation space for all wheelchair sizes.

Lounge seating is provided in the foyer. The seats are soft with a seat height of 400mm.

**Reception:** Counter is at a high standing height. Portage to rooms is available.

**Internet access:** A computer is provided at a lowered section of the reception desk, for guest use. The counter is wide, 780mm high, with knee clearance of 760mm. A tub style chair is provided. There is dial-up internet access in the apartment.

**Signage:** Signage is black cursive print on a silver background. All signs are large and well placed to direct visitors to essential services.

**Information:** Printed information produced by the hotel is in good colour contrast and an easy to read font. Information is generally printed onto coloured paper.

### **Accessible public toilet:**

**Location:** A male and female designated accessible toilet within separate blocks on the ground floor at the rear of the reception area.

Both have an identical layout and are available for guests attending the Courtside Cafe.

**Signage:** There is directional signage to the toilets. An access symbol is displayed on the male and female toilet doors.

**External access:** A wide (1300mm) corridor with a change of direction to 1050mm wide corridor leads to the entry door to the female toilets. The accessible toilet is located within the female toilet block. Access to the female toilets may be restricted to medium size wheelchairs due to the change of direction in the corridor and restricted space around the entry door.

**Entry door:** 755mm wide and fast to close with a D handle.

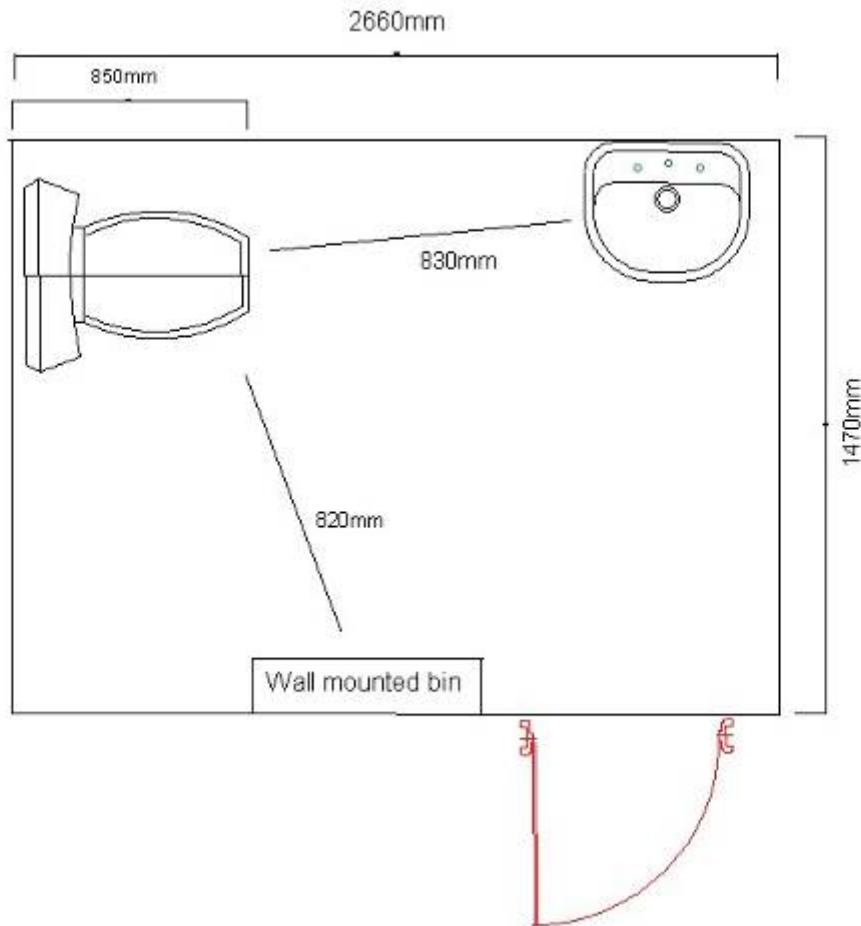
**Toilet door:** 760mm wide with no door closer and a lever style handle. The door has a small, high locking device.

**Pan height:** 440mm.

**Basin height:** 800mm.

**Lighting:** Lights are on at all times.





**Lift:** A walk through lift that provides access to all floors, including the car park.

Lift three is 1130mm wide x 2250mm deep; with a clear open door width of 1000mm. Direction of travel information is displayed both externally and internally. There is no audible announcement. External controls are no higher than 990mm and internal are up to 1210mm high. Controls have good colour contrast and illuminate when pressed.

**Accessible rooms:** There is a one bedroom accessible apartment (room 104), located on the first floor of the hotel. This is a non smoking room.

**Emergency:** There are audible emergency alarms in all rooms. Emergency egress maps are located behind the apartment door at a high standing height. Fire stairs are located close to the room, they have a stand size landing.

**Corridors to rooms:** Corridors are wide, accommodating all wheelchair sizes.

**Accessible apartment:**

Door: Door width is 740mm. The entrance swing door is a medium weight to open and fast to close, with a lever handle. The door opens directly into the apartment lounge. Access into the room is suitable for all wheelchair sizes.

The peep hole is set at a high standing height in the door. Access into the room is via a standard key, and lights are activated by a key card.

Kitchen: The self contained kitchen has a cook top, with controls located on the side and an under-bench oven. The work top is 900mm high. One electric power point is located to the side of the kitchen bench.



Lounge: Lounge seating (sofa bed) is firm, with a seat height of 420mm. All furniture is moveable and can be arranged to suit individual need.



Desk: A desk is located in the lounge room. It is 760mm high with knee clearance that is 650mm wide and 550mm high. The chair has armrests.

Dining: Dining table provides 730mm knee clearance underneath.

Bedroom: Sliding double doors with recessed door handles provide very wide access into the bedroom. The King bed is on castors, it is 570mm high and there is 100mm available space under the bed to accommodate a mobile hoist. The bed is firm. There is 1100mm space between the end of the bed and the wardrobe. There is space within the bedroom to accommodate wheelchairs of all sizes.



Wardrobe: The wardrobe has hanging space at standing height, a safe at sitting height, and drawers. The wardrobe door handles are a flush style, set onto the face of the door with approximately 3mm finger grip.

Balcony: Very large, spacious balcony is located off the bedroom. It has a standard domestic sliding door and a small step down of 15mm.

Bathroom:

Location: Accessed off the bedroom.

Door: 780mm wide swing door with no door closer that is light to open. Has a lever door handle with a small locking snib.

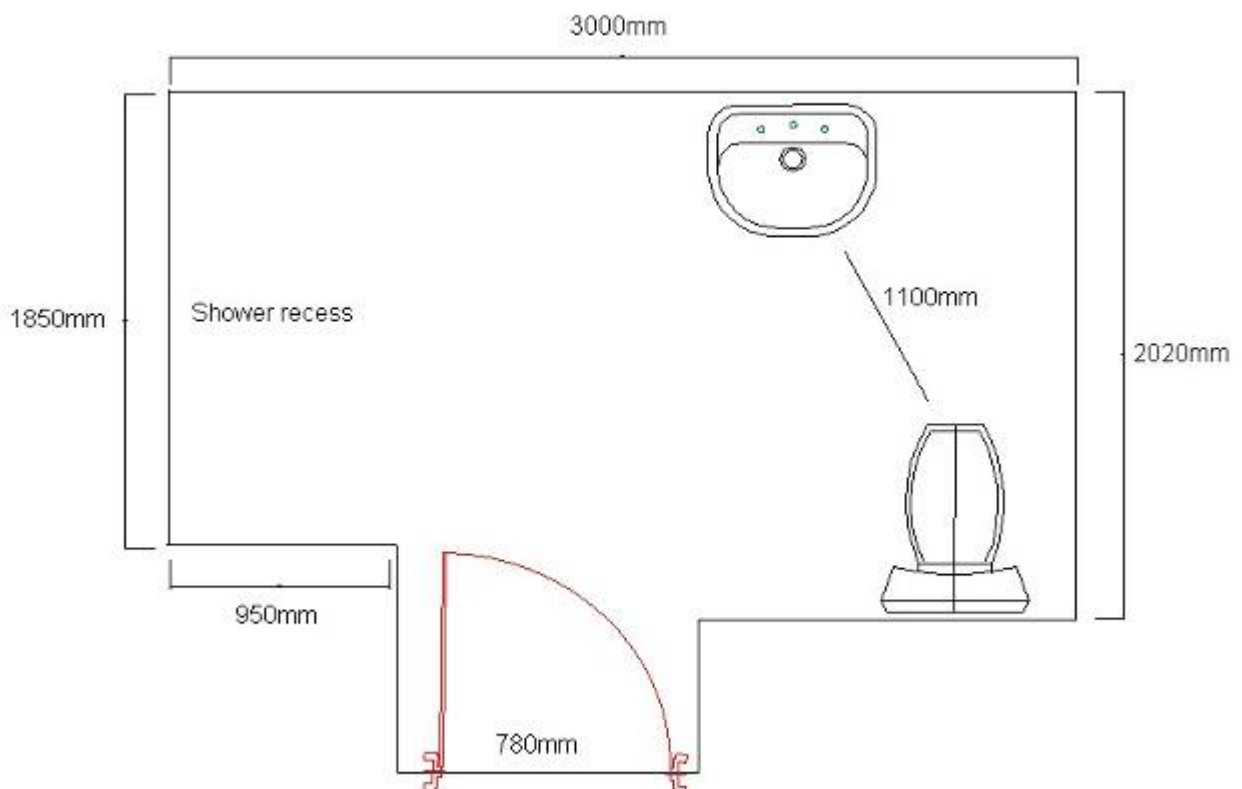
Pan height: 420mm

Basin height: 800mm

Hair drier: Sitting height

Shower: Hand held shower and height adjustable shower chair.

A moveable bedside table has been placed in the bathroom adjacent the basin.



Laundry: A front loading washer and top loading drier (at high standing height) are located within a double door cupboard, off the kitchen. A trough is provided in the corner of the cupboard, but may not be accessible to those using wheeled mobility aids as the clearance available between the door and the washing machine, to reach the trough, is 490mm.



### **Room facilities:**

- Remote controlled TV
- Lowered light switches
- Remote controlled air conditioning

### **Hovea Function Room:**

The Hovea Function Room is one of two located at the hotel.

Location: Ground level, via the pool area.

External access: Access to the reception room is from the reception foyer through wide, automatic sliding doors and via the pool area (two gates – see below for details)

Door: Wide (930mm) swing door that is fast to close with a lever handle at standing height.

Facilities: Boardroom style function room with long trestle style tables and chairs with arms that have a seat height of 430mm. The function room is spacious and would accommodate wheelchairs of all types. There is a kitchenette with a bench 900mm high.

### **Tennis Court:**

Located at ground level. Access to the tennis court is from the reception foyer through wide, automatic sliding doors. Access onto the courts is through a padlocked gate. There is an 80mm step at this gate.

### **Pool:**

Location: Ground level, beyond the tennis courts.

Door: Access to the pool is from the reception foyer through wide, automatic sliding doors. Pool gates are located at either end of the pool, and the entry gate is 1015mm wide, with a latch at very high standing height (1615mm).

Style: The below ground pool has step entry (no handrail). Pool sun lounges are located along the pool edge.



### **Hovea Gym:**

Location: Ground level, via the pool area.

External access: Access to the gym is from the reception foyer through wide, automatic sliding doors and via the pool area (two gates). Pool gates are located at either end of the pool, and the entry gate is 1015mm wide, with a latch at very high standing height (1615mm) and the exit gate (closest to gym) is 1030mm wide with a lift up latch at 1545mm high.

Door: Wide (930mm) swing door that is fast to close with a lever handle at standing height.

Facilities: Gym with standard equipment, including free weights. There is no unisex accessible toilet / change room located within this facility.

### **Courtside Restaurant:**

The restaurant is used for guest breakfasts. Breakfast is al la carte.

It is located off the reception foyer. Access into the restaurant is through a wide pivot door that is held open at all times.

Guests order breakfast off the menu, which has a small, serif type font, printed onto coloured paper.

There is circulation space within the restaurant to accommodate wheelchairs of all sizes. Tables are moveable and have a central pedestal, 700mm high. Chairs do not have armrests.

**Information prepared for the City of Perth, February 2007.**

**Care has been taken to ensure the accuracy of this information however no guarantee is given that the facility is fully accessible.**

**Please advise the City of Perth of any access changes since publication.**

This Report Template has been designed for use in the 'You're Welcome; WA Access Initiative' project only. It is not intended for any other purpose.

© Disability Services Commission 2005