

One World Backpackers

Summary:

- A converted older style home, single level with two accessible rooms available.
- A well appointed accessible bathroom and a public unisex accessible toilet.

Name: One World Backpackers.

Location: 162 Aberdeen Street, Northbridge.

Rating: Backpackers

Telephone: 08 9228 8206

Web: <http://www.oneworldbackpackers.com.au>

Accessible parking bay onsite: No.

Drop off available: No.

Closest accessible public transport:

- Perth Train Station
- Blue CAT stop 12, Aberdeen Street

Accessible public toilet onsite: Yes

Accessible parking: Not specifically provided however the small secure parking, with unmarked bays, at the rear of the building could be utilised. This parking is on uneven rustic style paving with a varying slope averaging 1:8. Entrance is into the rear of the building up an uneven path with a gradient of 1:11.

Pick up / set down bay: Standard street side parking.

External access: Direct access from the pavement to the front courtyard via a 920mm wide opening in the brick wall. The courtyard has uneven rustic style paving.

Main entrance: A two metre long, 895mm wide wooden ramp with a gradient of 1:19 leads to the front entrance. The front door which is 840mm wide is held open.

Foyer: A central corridor leads to the reception desk. The corridor has wooden floors with a central loose carpet runner. Ample circulation space for all wheelchair sizes.

A wooden seat with armrests and a backrest, seat height 470mm, is provided in the corridor.

Reception: Counter is at low standing height.

Telephone: A wall mounted public telephone is located near the entrance door. The telephone is coin operated with push buttons and adjustable volume control. Highest operable control is 1500mm.

Sitting room: The sitting room is located off the central corridor. A variety of seating is available and there is ample circulation space for all wheelchair sizes.

Internet access: Computers are on two desks within the sitting room. Desks are 700mm high and swivel chairs are provided.

Signage: Street side signage is large and easy to read; it is angled and most visible when travelling from south to north. There is minimal internal signage, staff are available to assist.

Information: Printed information produced by the facility is black on orange/brown and is an easy to read font.

Accessible unisex public toilet:

Location: An accessible toilet is located on the ground floor off a 1300mm wide corridor.

Signage: The toilet door is indicated with the international symbol of access.

Door 825mm wide, heavy to operate and slow to close.

D style handle with large snib.

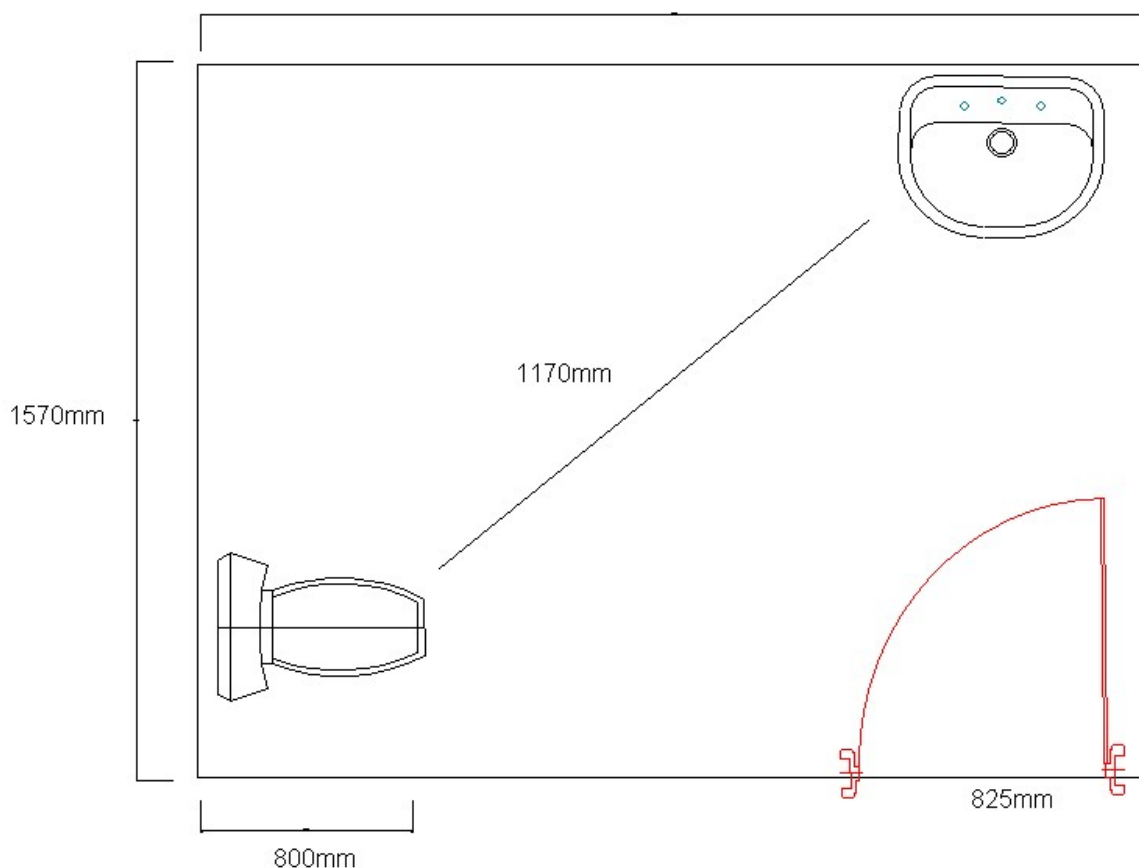
Pan height: 460mm.

Basin height: 780mm.

Lighting: Operated by a large rocker style switch at sitting height.



2100mm



Accessible rooms: Two accessible rooms are available. The smaller, number 3 has an adjoining door to the accessible bathroom and the larger, number 7, has access to the same bathroom across a corridor. Management has an arrangement that if the larger room is occupied by a person with a disability the bathroom will be shared. Alternatively the door to the smaller bedroom will be locked with the accessible bathroom only available to guests occupying room 7. All rooms are non smoking and access is with a standard key.

Emergency: There are audible alarms in all rooms. Emergency egress maps are located at standing height. Egress from Room 3 is via the corridor and main entrance ramp to the front courtyard. Egress from Room 7 is at the end of a corridor, through a 785mm wide door and a 110mm step down to the front verandah leading to the courtyard.

Corridors to rooms: 1300mm wide to room 3 narrowing to 1170mm leading to room 7. Corridors are wood or tiled.

Accessible rooms:

Room 3: This room has a connecting door to the accessible bathroom, but due to the restricted circulation space would be suitable for a person with an ambulant disability only. Space between the bed and the bathroom door is 470mm making it unsuitable for wheelchair users. Staff report that the room is used by people with ambulant disabilities. Lighting and the fan are operated by a large rocker style switch at sitting height. The wardrobe hanging space is at standing height but there is a low locker.

Door: Door width is 730mm. The entrance swing door is heavy to open and slow to close, with a D style handle.

Tea and coffee: A kettle is available on a low locker.

Bed: A double bed in the room is on castors, it is 500mm high and firm.



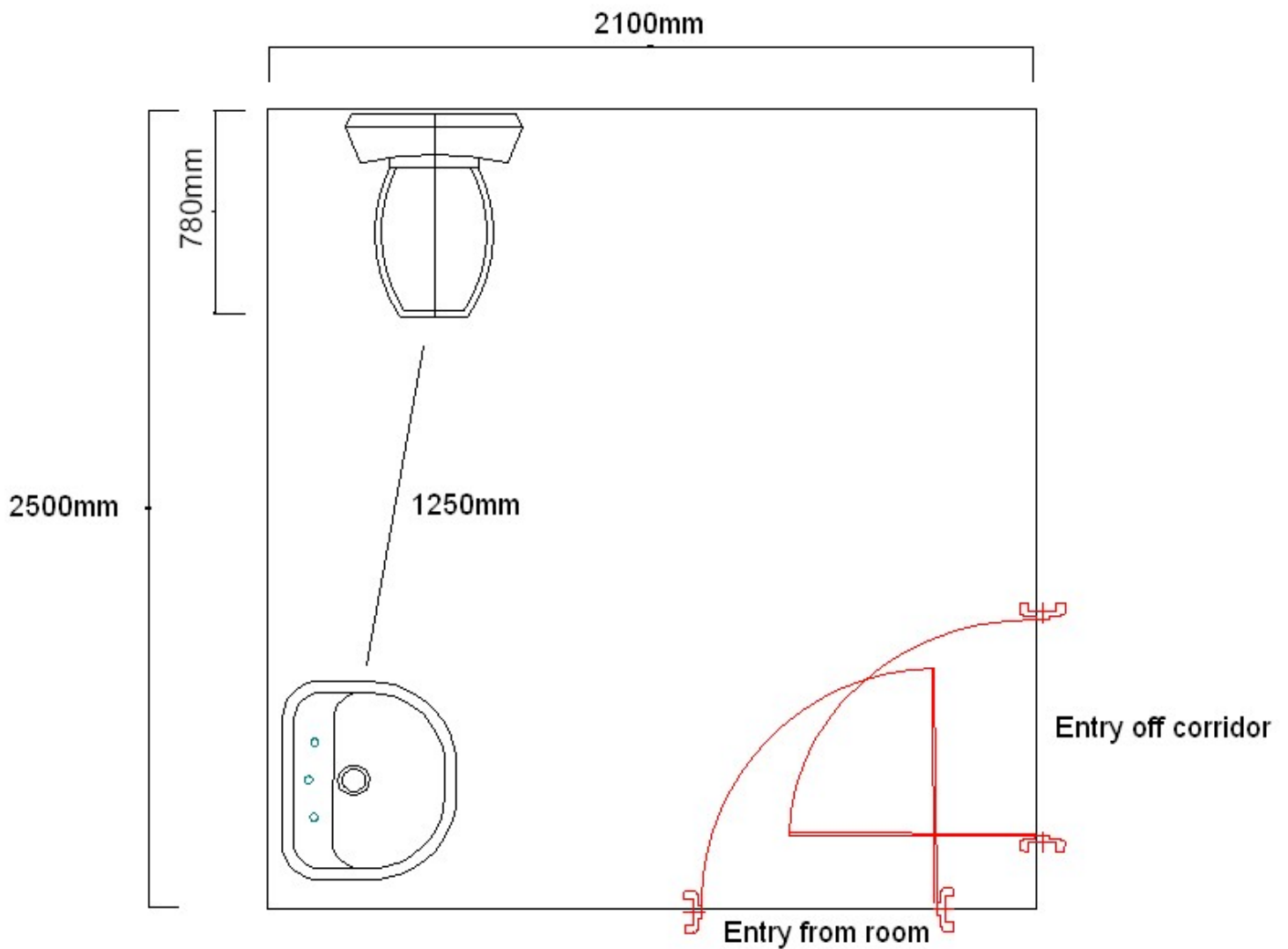
Bathroom:

Door: 815mm wide swing door opposite the bed. Has a D handle with a large snib.

Pan height: 460mm high.

Basin height: 800mm.

Shower: Hand held shower and height adjustable shower chair.



Room 7: This room has a separate door, across the corridor to the accessible bathroom. Lighting and the fan are operated by a large rocker style switch at sitting height. The wardrobe hanging space is at standing height but there is a low locker.

Door: Door width is 820mm. The entrance swing door is heavy to open and fast to close, with a large internal locking device. There is sufficient space for wheelchairs of all types to enter the room.

Bed: Two bunk beds, one has a double bed on the bottom. There is 1130mm space between the beds.



Bathroom:

Door: An 820mm wide swing door opens off the corridor opposite room 7. The door has a D handle with a large snib.

See details above for information on the accessible bathroom.

Room facilities:

- TV with remote control in room 3.
- Rocker style lowered light switches
- Fans in the bedrooms

Guest Laundry: Centrally located at the rear of the facility. Access is directly off the corridor and provides ample internal circulation space for all wheelchairs. There are top loading washing machines and front loading, floor mounted driers.

Communal kitchen: A communal kitchen is provided adjacent to the laundry. Entry is through a 940mm opening and change of direction at the end of the corridor. There is circulation space within the kitchen / dining area for a larger wheelchair.

The kitchen is in a commercial style with open shelves under the work benches, 920mm high. The gas stove top is 920mm high with controls mounted at the front of the unit

There are cupboards for storage of dry goods, at sitting and standing heights.



The dining area has two tables and single chairs without arms.

Information prepared for the City of Perth, January 2007.

Care has been taken to ensure the accuracy of this information however no guarantee is given that the facility is fully accessible.

Please advise the City of Perth of any access changes since publication.

This Report Template has been designed for use in the 'You're Welcome; WA Access Initiative' project only. It is not intended for any other purpose.

© Disability Services Commission 2005