

## **Parmelia Hilton Perth**

### **Summary:**

- Two accessible rooms, both non smoking, with different configurations.
- A shower commode and two manual wheelchairs are available for loan, on request.
- Accessible public toilets on level one close to the conference and function rooms.

**Name:** Parmelia Hilton, Perth

**Location:** Mill Street, Perth

**Rating:** 4 star

**Telephone:** 08 9215 2000

**Web:** <http://www.perth.hilton.com>

**Accessible parking bay onsite:** No.

**Drop off available:** Yes.

### **Closest accessible public transport:**

- Perth Train Station
- Blue CAT stop 1, St Georges Terrace
- Red CAT stop 18, Hay Street

**Accessible public toilet onsite:** Yes

**Accessible parking:** 24 hour valet parking.

**Pick up / set down bay:** A covered vehicle drop off is from the circular driveway at the front of the hotel, directly off Mill Street.

**External access:** Level access from the drop off bay to the hotel foyer, suitable to accommodate all wheelchair sizes.

Access from the Mill Street footpath is via a curved cobblestone pedestrian path with a slope of 1:10 at the steepest point. The path is 760mm wide at the narrowest point and would suit smaller style wheelchairs only. An alternative route is via the pick up and set down zone.

**Main entrance:** Level access through wide, glazed, automatic sliding doors.

**Foyer:** The main foyer is tiled and level throughout with ample circulation space for all wheelchair sizes. There is a corridor leading to the public telephone, Margeaux Nightclub and rear lift to the Conference and Banquet facilities on level 1. The corridor has a ramp, gradient of 1:8 and a carpeted surface. Alternatively there are three steps.

Lounge seating is provided in the main foyer. The seats are soft with a seat height of 420mm and have armrests.

**Reception:** Counter is at standing height. No better hearing card on display.

**Telephone:** Public telephone is located in the rear corridor (with ramp) off the main foyer. The telephone is wall mounted and push button with a 1080mm reach to the highest operable components.

**Business Centre / Internet access:** Computers are provided in the business centre at the base of the ramp in the rear corridor. The door is 750mm wide with a second

770mm opening into the computer room. Desks are 1000mm wide with 720mm knee clearance. The Centre has a separate reception desk and assistance is available.

**Signage:** All signage is clear, easy to read and in good colour contrast. There is an electronic directory board in the foyer. There is minimal directional signage. Staff will assist as required.

**Information:** Printed information produced by the hotel is in good colour contrast and an easy to read font.

## Accessible public toilets:

Two public accessible toilets are located on the first floor.

1. Location: A unisex accessible toilet accessed via the main lifts within the foyer. This toilet services guest attending the Ningaloo, Karri and Pinnacles function rooms.

Signage: There is no directional signage to the accessible toilets

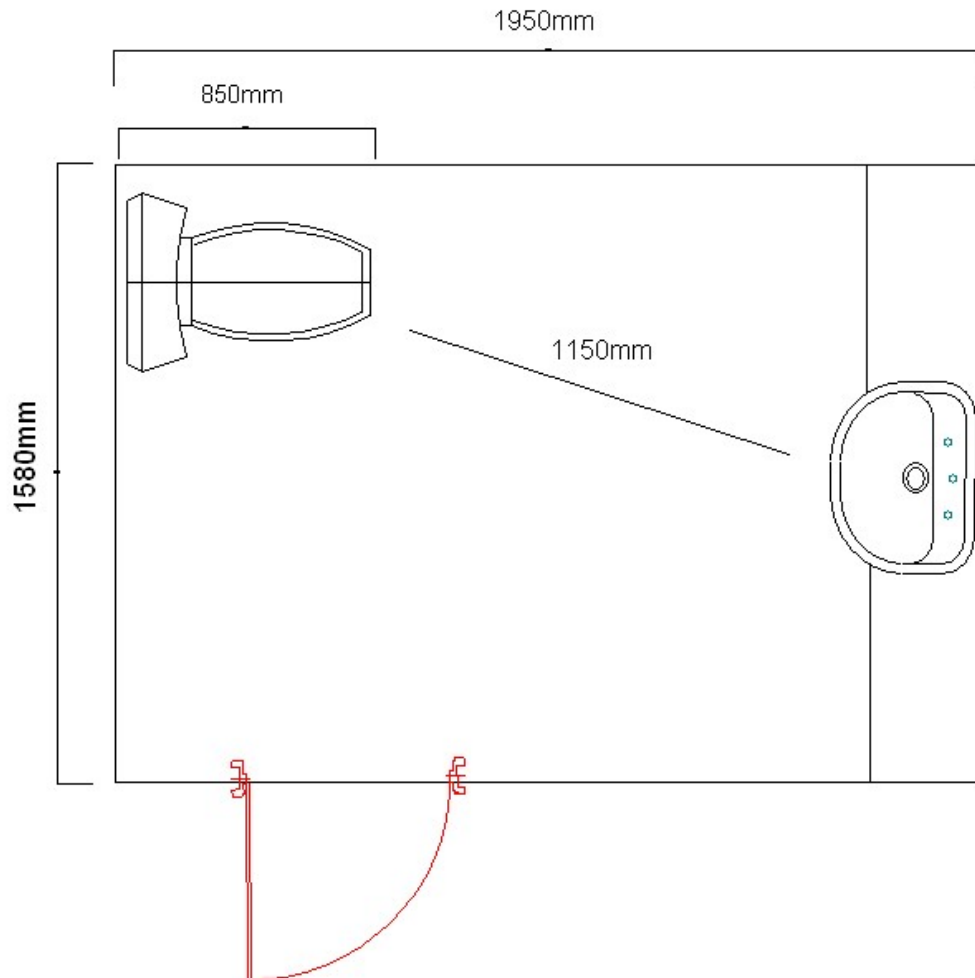
Door 860mm wide, light to operate and slow to close

D style handle with large snib

Pan height: 450mm

Basin height: 810mm

Lighting: There is a low switch within the cubicle.



2. Location: A male and female designated accessible toilet within separate blocks. Located on the first floor accessible via the rear conference room lift. These toilets service guests attending the Stirling and Swan Rooms.

Signage: There is no directional signage to these toilets and they are not signed as accessible.

Female:

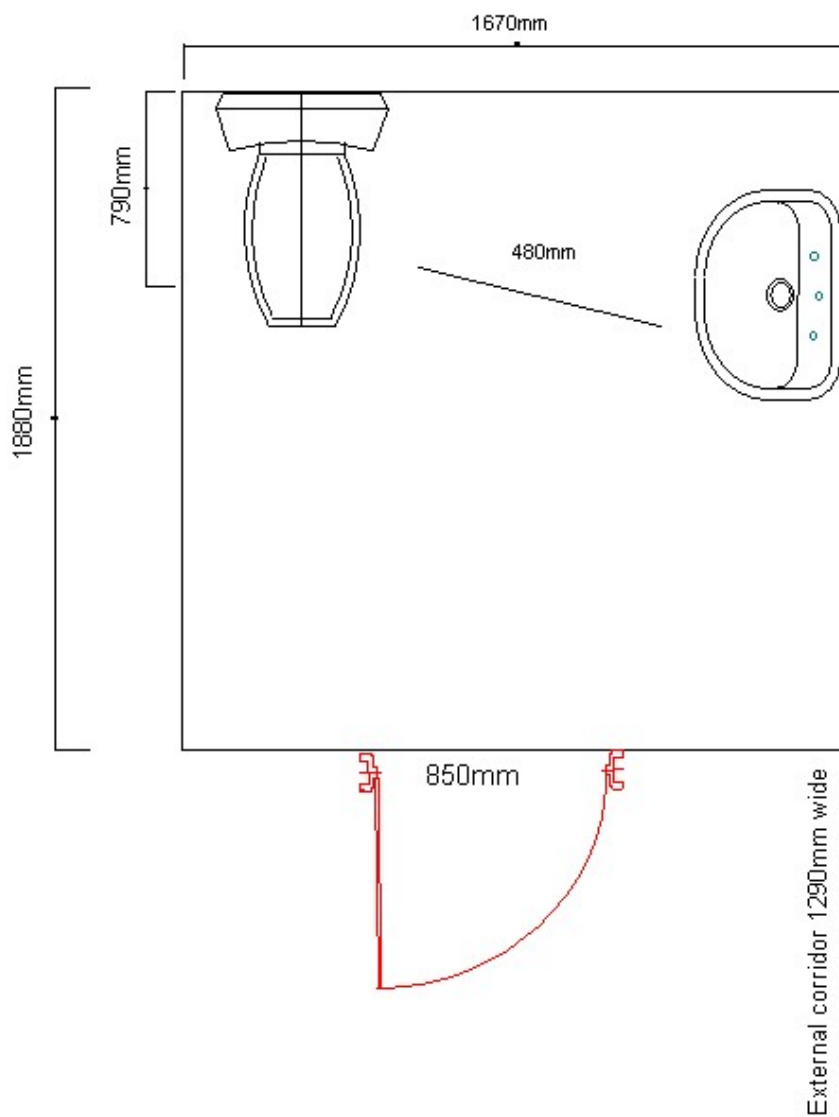
Entrance door: 760mm wide inward swinging door with a high D style handle opens into an airlock. This entrance would suit smaller style wheelchairs due to the reduced space around the door inside the airlock. The door on the toilet side of the airlock is held open. The accessible toilet and basin is located within a cubicle.

Toilet door: 850mm wide outward swinging door with a D style handle with large snib

Pan height: 470mm

Basin height: 820mm

Lighting: on at all times



**Male:**

Entrance door: 760mm wide inward swinging door with a high D style handle opens into a corridor. This entrance suits smaller style wheelchairs due to the reduced space around the door both inside and outside. There is a 780mm opening with a 25mm lip into the common toilet area. The accessible toilet is located within a cubicle.

Toilet door: 760mm wide inward swinging door with no handle and a large snib.

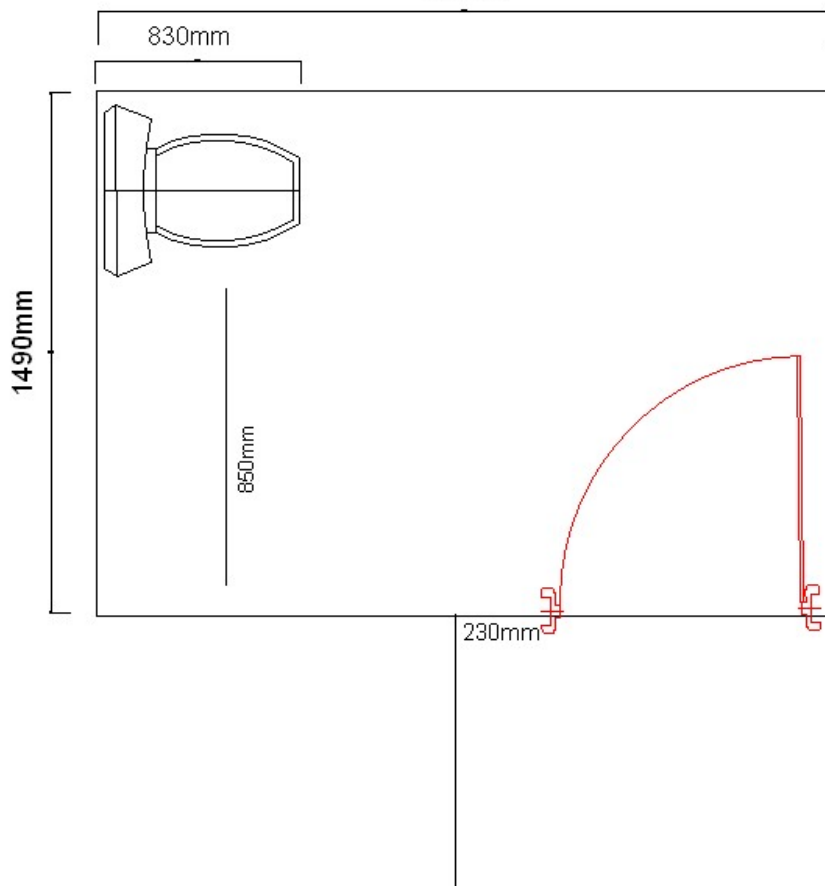
Pan height: 450mm

Basin height: 920mm, located outside of the cubicle

Lighting: on at all times



1810mm



## Lifts:

A bank of three similar lifts in the foyer providing access to all floors.

Lifts are 1850mm x 1680mm, with a clear open door width of 1140mm. Direction of travel information is displayed both externally and internally, and there is a tonal announcement of the floor level inside the car. The highest control buttons require an upward reach of 1480mm.

There is one lift at the end of corridor off the main foyer that services the Stirling and Swan function rooms.

The lift is 1600mm x 1770mm; with a clear open door width of 1060mm. Direction of travel information is visually displayed both externally and internally. The highest control buttons require an upward reach of 1500mm.

Access to the lift door at the ground level is via a 910mm space between the wall and steps and 1000mm between the door and the end of the curved wall. This limited space and the required change of direction would enable access by smaller wheelchair styles only.



## Accessible rooms:

Room 214 Located on level two, non smoking.

**Emergency:** Audible and visual flashing alarms. Emergency egress maps are located on the door at 1400mm high. The emergency escape stairs, opposite the room, have a standard sized landing.

**Corridors to room:** Corridors are carpeted, wide, accommodating all wheelchair sizes.

### Accessible room:

Door: Door width is 800mm. The entrance door has a lever handle and is light to operate. Access to the door from inside the room is suitable for smaller wheelchairs only due to restricted space around the entry door (obstructed by closet and narrow internal corridor).

There are peep holes set at sitting and standing heights in the door. Access into the room is via a card swipe.

Tea and coffee: The bench is at sitting height and tea making facilities are stored in the bottom of a cupboard at floor level. Access is suitable for all styles of wheelchairs.

Lounge: Lounge seating is located in the bedroom, near the bed. Chairs are soft and deep with armrests with a seat height of 420mm.

Balcony: The room has a balcony that can be accessed via a domestic style sliding door with a 50mm lip both inside and out. Smoking is permitted on the balcony.

Bed: The king sized bed, on castors can be separated into two smaller beds. It is 520mm high and there is 120mm available space under the bed to accommodate a mobile hoist. The bed is firm.



Bathroom:

Door: 720mm wide sliding door with a D style handle

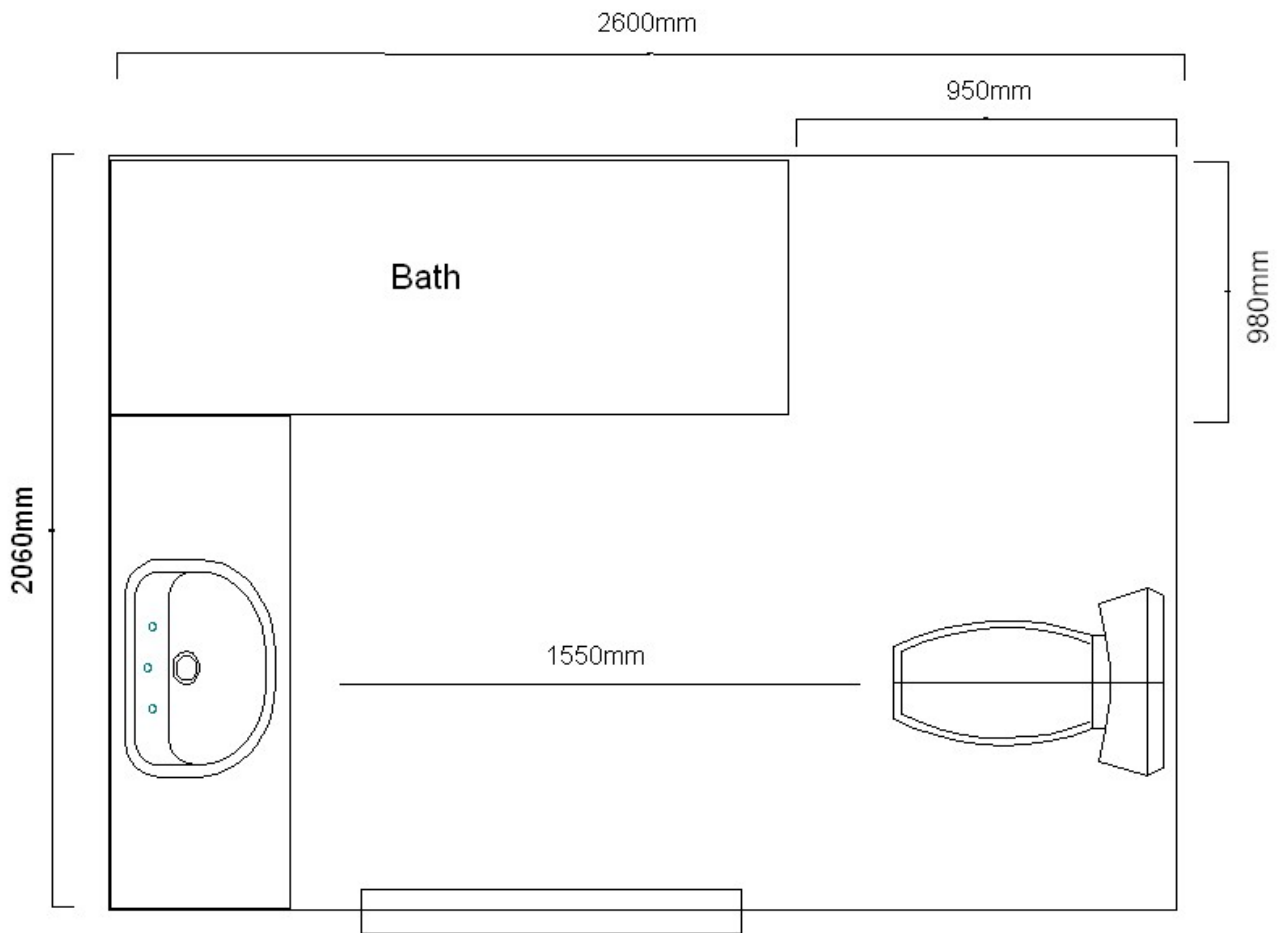
Pan height: 380mm

Basin height: 850mm

Shower: Hand held shower. A plastic style shower chair is available on request

The hair dryer is portable and stored in the bed side drawer





### Room facilities:

- TV with remote control
- Volume control telephone
- Bed side light switches
- Wall mounted air conditioning controls
- A plastic style shower chair, on request
- A front wheel drive toilet and shower commode, on request

Room 318 Located on level three, non smoking

**Emergency:** Audible and visual flashing alarms. Emergency egress maps are located on the door at 1400mm high. The emergency escape stairs, opposite the room, have standard sized landing.

**Corridors to room:** Corridors are carpeted, wide, accommodating all wheelchair sizes.

### Accessible room:

Door: Door width is 840mm. The entrance door has a lever handle and is light to operate. Access through this door is suitable for all styles of wheelchairs.

The peep hole is set at standing height in the door. Access into the room is via a card swipe.

Tea and coffee: The bench and cupboard are at sitting height. Access is suitable for all styles of wheelchairs.

Lounge: The bedroom has a firm chaise style lounge with a seat height of 430mm.

Balcony: The room has a balcony that can be accessed via a domestic style sliding door with a 50mm lip both inside and out. Smoking is permitted on the balcony.

Bed: The king sized bed, on castors can be separated into two smaller beds. It is 520mm high and there is 120mm available space under the bed to accommodate a mobile hoist. The bed is firm.



Bathroom:

Door: 900mm wide swing door with a lever style handle

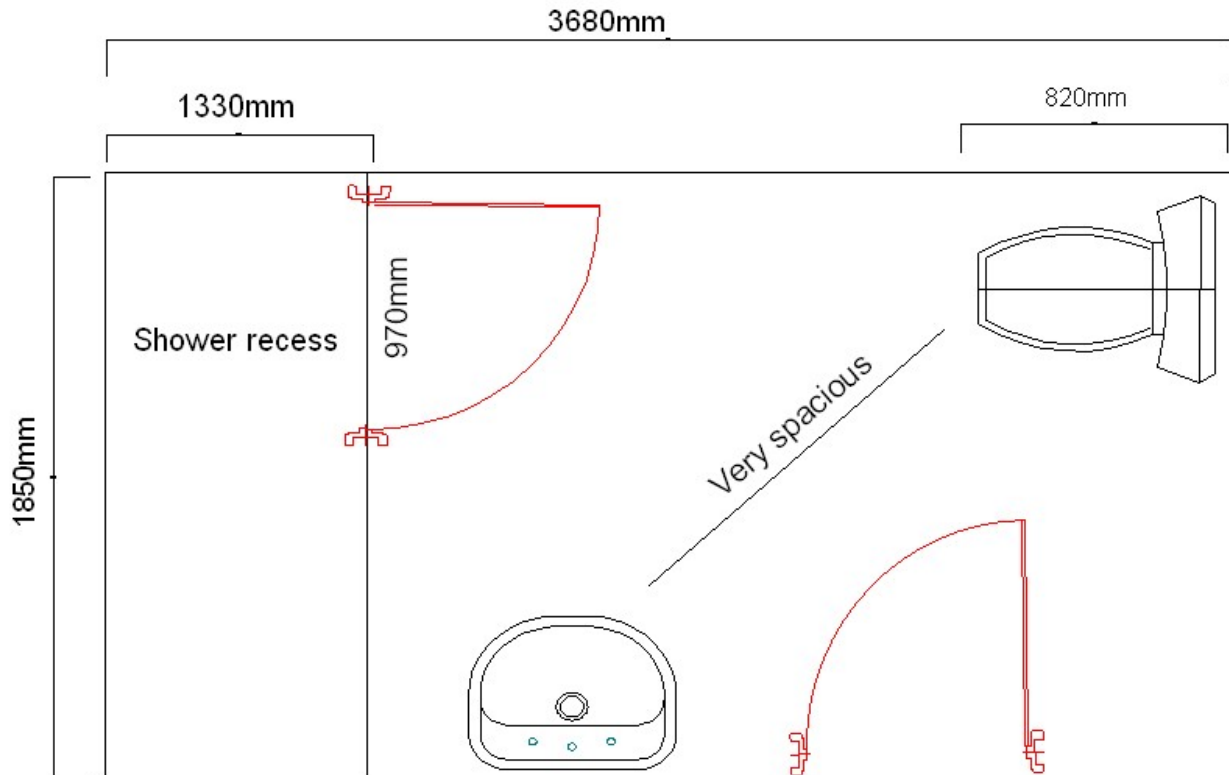
Pan height: 460mm

Basin height: 850mm

Shower: Hand held shower. A plastic style shower chair is available on request

The hair dryer is portable and stored in the bed side drawer





### Room facilities:

- TV with remote control
- Volume control telephone
- Bed side light switches
- Wall mounted air conditioning controls
- Desk with 730mm knee clearance
- A plastic style shower chair, on request
- A front wheel drive toilet and shower commode, on request

### Globe Wine Bar and Restaurant:

This Restaurant is used for the buffet breakfast and is open every day for lunch and dinner.

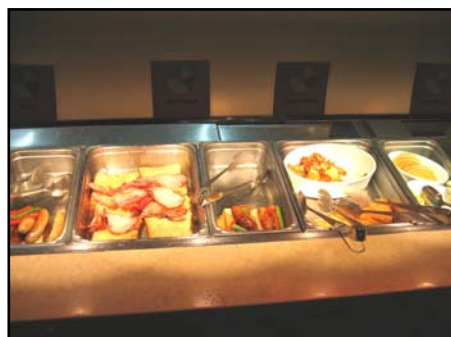
Access into the restaurant is directly off the hotel foyer through wide doors that are held open, or alternatively off Mill Street via five steps. There is some alfresco dining on the Mill Street footpath. The restaurant is spacious with sufficient circulation space for all styles of wheelchairs. It has wooden and tiled flooring. Bookings can be made.

Breakfast is self serve with hot and cold food sections. Counters vary in height; however staff are on hand to assist if required.

Tables are moveable and have a central pedestal and chairs have armrests.

Menu: Good colour contrast with 12 point font.

Accessible toilet: Accessible toilet is on level one, accessed via the hotels main lift.



## **Pool and Health Club:**

Location: Level two

Gym door: Two 820mm swing doors with D style handles. The key card entrance and press button exit control are set at 1350mm high. There is sufficient space for all styles of wheelchairs to move through the entrance.

Pool access: 1120mm automatic sliding door with security key card entrance. The internal and external controls are set 1380mm high. The pool has a raised ledge around the outside and entrance is via steps with a handrail.

The sauna has a 580mm wide door with limited circulation space internally.

There are no accessible toilets within the pool / health club area.

**Guest Laundry:** A laundry service is available.

**Information prepared for the City of Perth, January 2007.**

**Care has been taken to ensure the accuracy of this information however no guarantee is given that the facility is fully accessible.**

**Please advise the City of Perth of any access changes since publication.**

This Report Template has been designed for use in the 'You're Welcome; WA Access Initiative' project only. It is not intended for any other purpose.

© Disability Services Commission 2005