

Quest on James

Summary:

- Spacious ground floor apartment with Queen bedroom and laundry facilities.
- Lift access to all floors

Name: Quest on James

Location: 228 James Street Northbridge, Perth

Rating: 4½ star

Telephone: 08 9227 2888

Web: www.questonjames.com.au

Accessible parking bay onsite: Yes

Drop off available: No

Closest accessible public transport:

- Perth Train Station
- Blue CAT stop 13, James Street

Accessible public toilet onsite: No

Accessible parking: No

Pick up / set down bay: Standard ¼ hour set down area is available at the front of the apartment building. There are no kerb ramps and access to the pavement is via a nearby driveway.

Accessible parking: There are no accessible bays located in the basement car park. The standard bays are wide (the bay opposite the lift is 3100mm wide with overhead clearance of 2200mm). The minimum height clearance into the car park was unable to be determined on the day of the visit.

External access: Access to foyer is off a footpath with a cross slope of 1:14 and a short ramp at the door, gradient 1:22. External access is suitable to accommodate all wheelchair sizes.

Main entrance: Access through a glazed, automatic sliding door.

After hours entry:

- Reception is staffed from 7.00am – 11.00pm
- After hours swipe card entry at a high standing height (1450mm)
- Key pad to call apartments or Manager after hours at a high standing height (1450mm)
- Intercom at a high standing height (1540mm)

After hours exit:

A swipe card and intercom are set at a high standing height (1400mm) at the entry door from the apartments to the hotel foyer. This door gives entry to the reception area after hours. This entry door has a small lip.

Foyer: Wood look vinyl flooring, level throughout. Ample circulation space for all wheelchair sizes.

Lounge seating is provided in the foyer. The seats are firm with armrests.

Reception: Counter is at high standing height.

Signage: All signage is clear, easy to read and in good colour contrast. There is directional signage to all apartments and essential services.

Information: Tourist information is provided in the reception foyer at a range of heights. Staff are available to assist.

Lift: A single lift provides access to upper level apartments and the basement car park.

The lift is 1300mm wide and 2100mm deep with a clear open door width of 900mm. Direction of travel information is displayed both externally and internally. There is no audible information of the floor level either inside or outside that lift. All buttons are no higher than 1260mm Controls are grey on black and illuminate when pressed.

Access from the basement level (car park) to the external controls and lift door is from a ramp that is splayed at either side and has no landing, See diagram below.



Accessible rooms: There is one accessible apartment which is located on the ground floor of the building, room number G02. This is a designated smoking room.

Emergency: There is an audible emergency alarm in the bedroom. Emergency egress maps are located behind the door at a high standing height.

Corridors to rooms: Carpeted corridor to the apartment from the reception foyer. There are two points where the corridor narrows to 870mm. There is sufficient space to accommodate wheelchairs of all sizes.

Accessible rooms:

Door: Door width is 800mm. The entrance swing door is light to open and is slow to close, with a circular knob handle.

A sofa is located next to the door, but it is moveable, to enable access for all wheelchair types. Access into the apartment is with a standard key.

Kitchen: The self contained kitchen has an electric cook top, with controls located on the side. The work top is 850mm high with some under-bench storage. Knee clearance of 610mm is provided under the under sink, with a 480mm reach to the taps.



Room service can be order from the Nova Café Lounge, located on the ground floor.

Dining: Dining table adjacent the kitchen. The table is 750mm high with 650mm knee clearance. Dining chairs are 500mm high, without armrests.

Lounge: Lounge room has firm chairs, with armrests. All furniture is moveable and the room can be set up to accommodate the individual needs of the guest. All light switches are at standing height.

A desk is provided in the lounge area, it is 750mm high with 590mm knee clearance. Wireless internet access provided and Broadband can be provided if required.



Laundry: A laundry is set up behind double swing doors, located within the lounge area. There is a trough (640mm clearance underneath with a 580mm reach to the taps) and a top loading washer and front loading drier at a high standing height.



Bedroom: Access into the bedroom is through very wide double sliding doors, with a recessed door handle. A Queen bed in the room is on castors, it is 460mm high and there is 120mm available space under the bed to accommodate a mobile hoist. The bed is firm.

Wardrobe: Drawers are provided at sitting height and hanging rack is at standing height.

Balcony: A balcony is located off the bedroom. It has a domestic sliding door with a width of 710mm. There is an internal step of 30mm and an external step of 100mm.

Bathroom:

Door: 820mm wide swing door with no door closer. Has a lever handle with small snib.

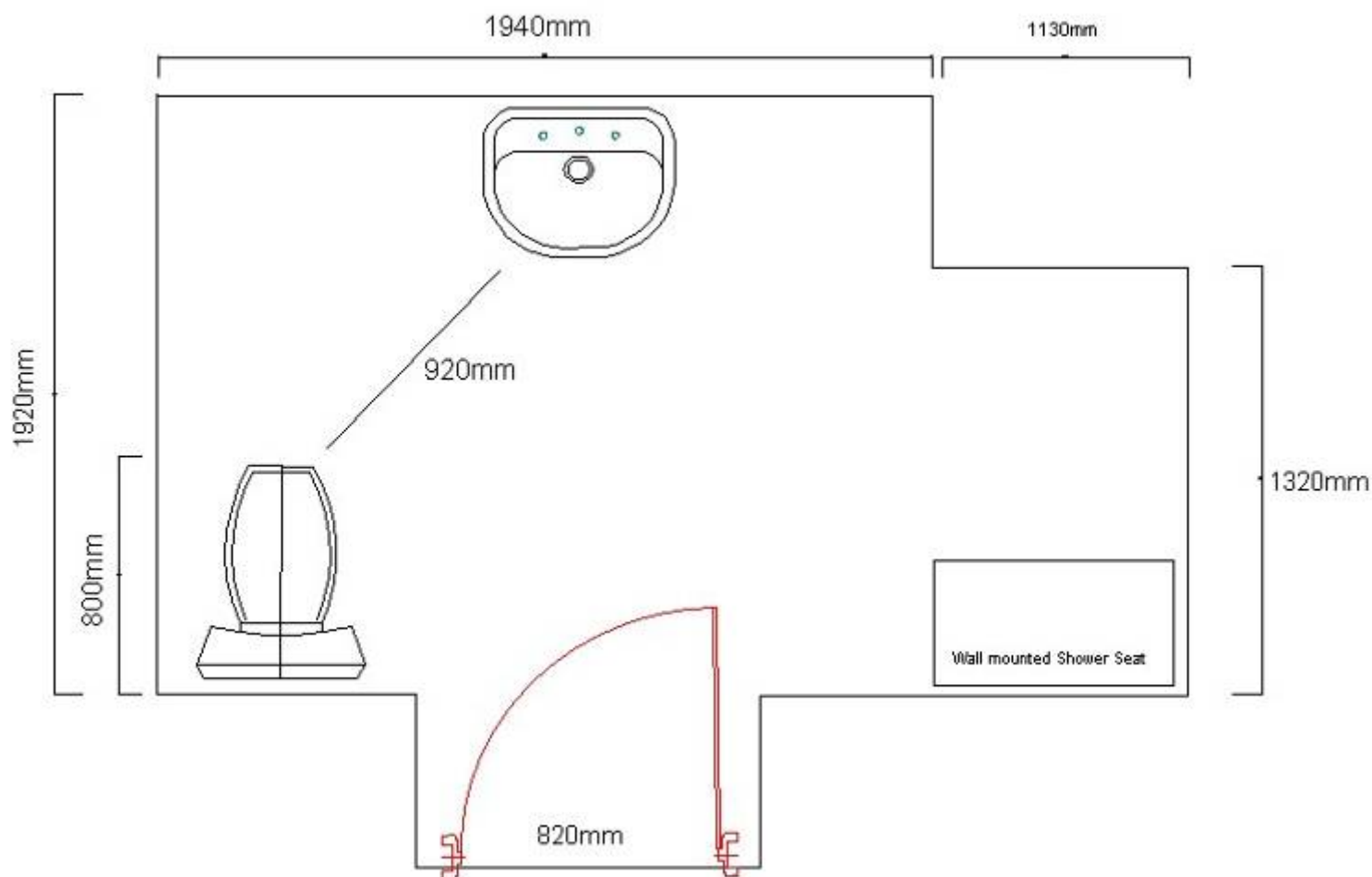
Pan height: 450mm

Basin height: 770mm

A hair drier is provided at sitting height.

Shower: Hand held shower and wall mounted fold down seat, 45mm high.

Emergency call buttons: Nil.





Room facilities:

- Remote controlled TV
- Remote controlled air conditioning
- Wireless internet access

Pool:

Location: Ground floor, open air pool, behind the reception and lift area.

Gate: 750mm wide and has a high, lift up, spring loaded latch (1580mm) (in order to comply with safety requirements). The gate is spring loaded and closes fast.

Style: The pool is a below ground style and access into the pool is via steps. A spa located next to the pool is accessed in the same way.

Outdoor tables are set up near the pool.



Nova Cafe Lounge Restaurant:

A café is located adjacent the apartment hotel, with an entry door off the hotel foyer. The door entry is 760mm wide through an internal corridor. A café table is set up in this corridor, restricting access to 700mm.

Access from the street front into the café is up a 100mm step and lip. Front entry is through a 700mm wide double door, the second leaf of the door can be opened if required.

Café is open for breakfast through to dinner.

The payment and serving counters are at standing height. The Café is spacious accommodating wheelchairs of all sizes. The floor is carpeted and the moveable tables have a central pedestal. Chairs do not have armrests.

The menu is copied, black print onto coloured paper.

Information prepared for the City of Perth, February 2007.

Care has been taken to ensure the accuracy of this information however no guarantee is given that the facility is fully accessible.

Please advise the City of Perth of any access changes since publication.

This Report Template has been designed for use in the 'You're Welcome; WA Access Initiative' project only. It is not intended for any other purpose.

© Disability Services Commission 2005