

Regal Apartments

Summary:

- Three accessible apartments available.
- One accessible car bay in the basement car park.
- One public unisex accessible toilet located at ground level.

Name: Regal Apartments - East Perth.

Location: 11 Regal Place, East Perth, vehicle access off Royal Street into Regal Place.

Rating: 4 star.

Telephone: 08 9221 8614

Web: <http://www.regalapartments.com.au>

Accessible parking bay onsite: Yes.

Accessible drop off available: No.

Closest accessible public transport:

- Yellow CAT stop 4 and 33, Royal Street

Accessible public toilet onsite: Yes

Accessible parking: Basement guest parking is available with direct access into the lift foyer. The accessible bay is well signed and directly opposite the entrance door. Vehicular access is off Regal Place.

Overhead clearance: 2000mm at the entrance and 2400mm at the bay.

Width of bay: 2300mm with adjacent clear space for a wheelchair transfer.

Door to the lift lobby is 790mm wide and access to the door internally could be restricted to medium style wheelchairs due to the location of letterboxes adjacent to the door.

There is a panel of apartment doorbells and security proximity key reader in the car park set at 1530mm high.



Pick up / set down bay: There is a loading zone directly outside the hotel with no kerb ramp to the pavement.

External access: Level access from the Regal Street footpath.

Main entrance: 760mm (each leaf) wide double doors with a 110mm external lip.

There is an external 1200mm high proximity key reader at the front entrance.

There is a lock box 700 – 800mm high, set back 250mm that houses information for new guests who arrive outside staff hours.

Foyer: Low pile carpet and tiles, level throughout. Ample circulation space for all wheelchair sizes.

Lounge seating is provided in the foyer and within a sitting room. The seats are soft with a seat height of 360mm and no armrests.

Reception: Counter is at standing height. The reception desk is not staffed full time. New guests arriving out of hours will be provided with a key code to access the external lock box. Access through the reception area and adjoining sitting / reading area is very spacious and suitable for all styles for wheelchairs

Internet access: Dial - up internet access in all rooms.

Signage: There is limited directional signage. Staff assist as required.

Information: Printed information produced by the hotel is yellow cursive writing on red and purple background.

Accessible public toilet:

Location: A unisex accessible toilet is located on the ground floor at the end of a wide corridor, leading to the lift lobby.

External access: Off an 1180mm wide corridor.

Signage: There is sign on the toilet door.

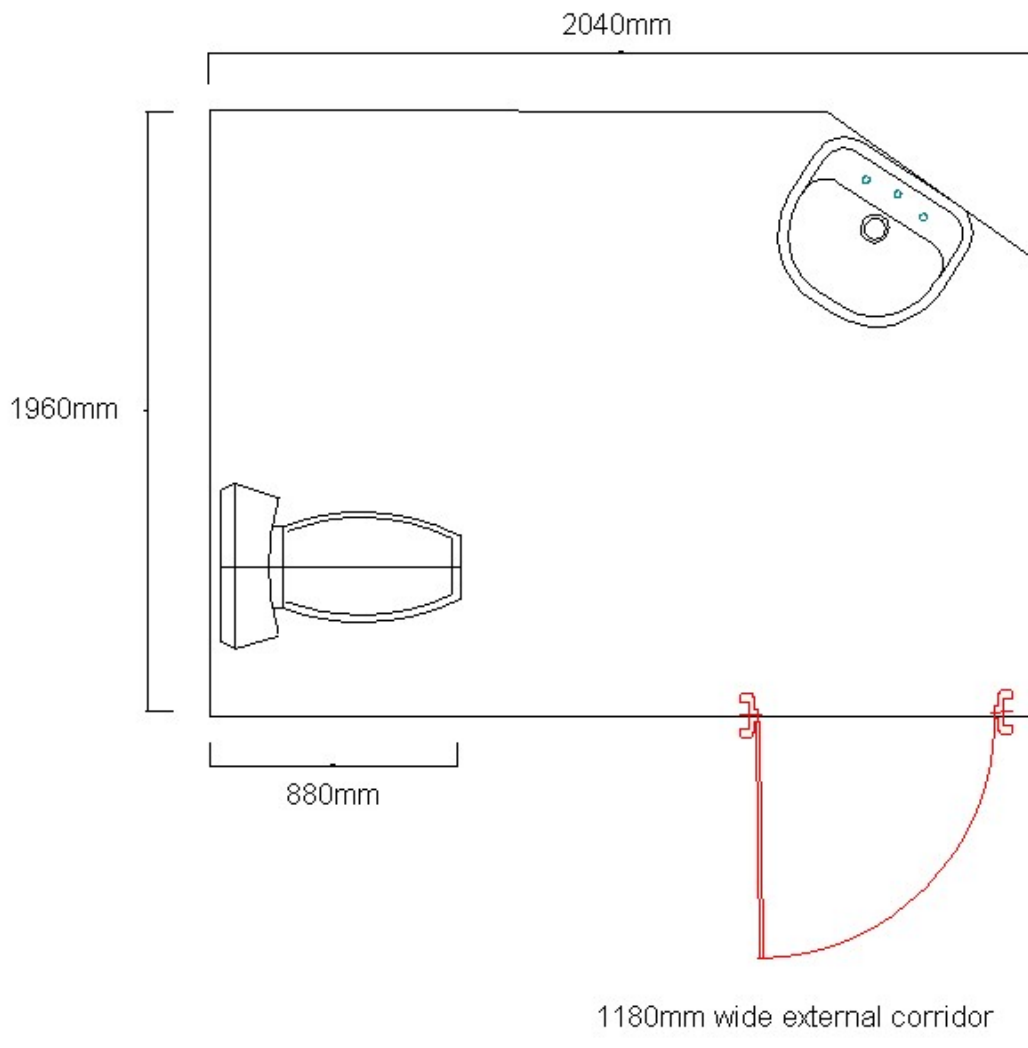
Door 800mm wide and heavy to operate and slow to close.

D style handle with large snib.

Pan height: 440mm.

Basin height: 850mm.

Lighting: A low light switch.



Lift: One lift provides access to all floors. Access from the entrance corridor into the lift lobby is via an 800mm wide door with a security proximity card reader, 1340mm high. There is sufficient space for wheelchairs of all sizes to move into and through the lift lobby.

The lift is 1400mm x 2100mm; with a clear open door width of 900mm. Direction of travel information is displayed both externally and internally. All buttons are within a range of 900mm - 1200mm high.

Accessible rooms: There are three, two bedroom accessible apartments within the hotel all with the same facilities. They are located on the second, third and fourth floors and are all designated as non smoking.

Emergency: There are audible alarms in all rooms. Emergency egress maps are located at standing height. The fire stairs at the end of the corridor have a standard sized landing.

Corridors to rooms: Corridors are carpeted and wide, accommodating all wheelchair sizes.

Accessible rooms:

Door: The entrance swing door is 820mm wide is light to operate, has a lever handle and is opened with a standard key. Access out of the room is suitable for a smaller to medium wheelchairs only due to restricted space around the entry door (obstructed by a narrow internal corridor).

Kitchen: There is a galley style kitchen off the living area with a clear space between the benches of 900mm. Benches are 900mm high with a 480mm reach to the taps. The power point is set in a corner with a 530mm reach over the bench. There is a gas hotplate with the controls at sitting height on the face of the under bench oven.



Lounge: Lounge seating is located in the living area. There is a soft sofa bed with armrests and a seat height of 3600mm.

Bedrooms: Two bedrooms are directly off the living room.

Bedroom 1: A 670mm wide door with a door knob into a bedroom with a firm queen sized bed. The bed is on castors, 580mm high with 100mm under the bed to accommodate a mobile hoist. The bed has 820mm space at the side.

Bedroom 2: A double door that opens out to provide a 1340mm wide opening. It presently houses two single beds, however the arrangement is flexible.

Wardrobe hanging space is at standing height.



Bathroom:

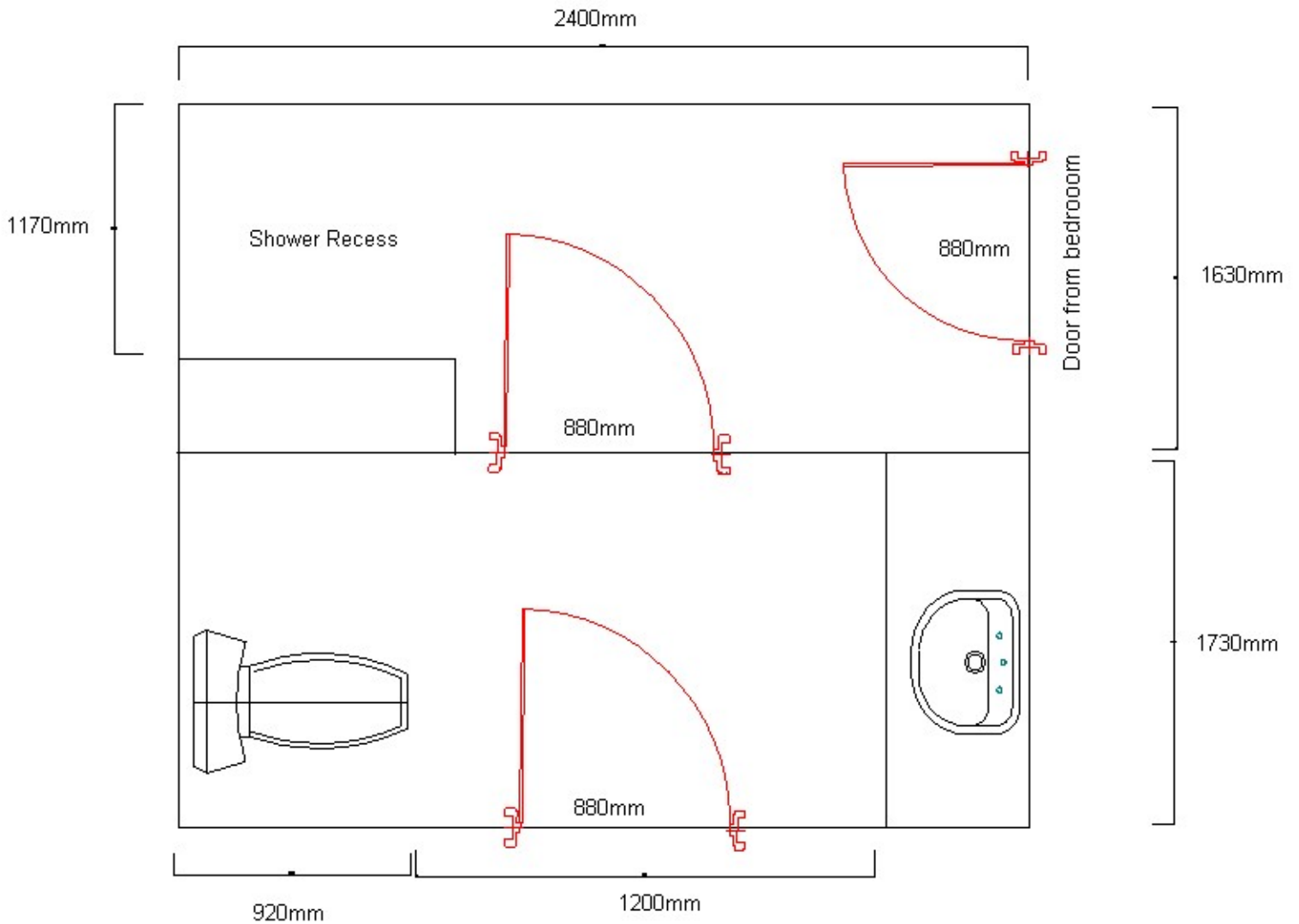
The bathroom has an entry door off the living area and off the double bedroom.

Doors: All doors are wider than 800mm and have a circular door knob with push button lock.

Pan height: 420mm high.

Basin height: 840mm.

Shower: Hand held shower, there is no seat provided.



Laundry: There is a separate laundry through the kitchen. The door is 670mm wide and due to the position of the kitchen bench and an internal cupboard access would be suitable for smaller style wheelchairs only. There is a top loaded washing machine and high wall mounted dryer.



Room facilities:

- TV with remote control
- Volume control telephone
- Lowered light switches
- Remote controlled air conditioning

Information prepared for the City of Perth, January 2007.

Care has been taken to ensure the accuracy of this information however no guarantee is given that the facility is fully accessible.

Please advise the City of Perth of any access changes since publication.

This Report Template has been designed for use in the 'You're Welcome; WA Access Initiative' project only. It is not intended for any other purpose.

© Disability Services Commission 2005