

Riverview on Mount Street

Summary:

- One accessible apartment at the rear of the hotel, directly off the rear car park.
- A unisex accessible toilet at the rear of the hotel.

Name: Riverview on Mount Street, Perth.

Location: 42 Mount Street, Perth.

Rating: Four star apartment rating (self rated).

Telephone: 08 9321 8963

Web: <http://www.riverviewperth.com.au>

Accessible parking bay onsite: No.

Drop off available: No.

Closest accessible public transport:

- Blue CAT stop 21, Mounts Bay Road. The walk to Mounts Bay Road is down a steep hill.

Accessible public toilet onsite: Yes

Accessible parking: There is no designated accessible parking bay; however staff have advised that the bay adjacent to the accessible apartment can be set aside when requested. This bay has a slope of 1:15 from the back of the bay to front. The parking area at the rear of the facility can only be accessed by an 1150mm high pole mounted security key pad. Parking should be arranged prior to arriving at the hotel.

External access: Access to the main entrance is off the sloped footpath (gradients varying from 1:12 to 1:9) and 5 steps with a central handrail.

The accessible entrance is via the side vehicle driveway, with a secure gate. The driveway is approximately 15 metres long with a gradient of 1:9 and leads to the rear car park. A lift is located at the end of a covered walkway off the car park. Guests will need to make prior arrangements before checking in, to have the gate opened, to be escorted to the accessible apartment and be directed to the lift and reception.

Main entrance: Five steps to a wide, glass, manual swing door.



Main street entrance



Accessible street entrance

Foyer: Tiled and level throughout. This area is shared with the café and there is ample circulation space for wheelchair of all sizes.

Lounge seating is provided in the foyer. The seats are 410mm high with no armrests.

Reception: Off the main foyer with a counter at standing height.

Internet access: Internet wireless connection is available in the foyer / café area.

Signage: All available signage is clear, easy to read and in good colour contrast. There is no directional signage however staff assist as required.

Information: Printed information produced by the hotel is in good colour contrast and an easy to read font.

Accessible public toilet:

Location: At the rear of the hotel adjacent to the accessible room and the laundry.

Signage: There is no directional signage to the accessible toilets. The word 'toilet' is printed on the window.

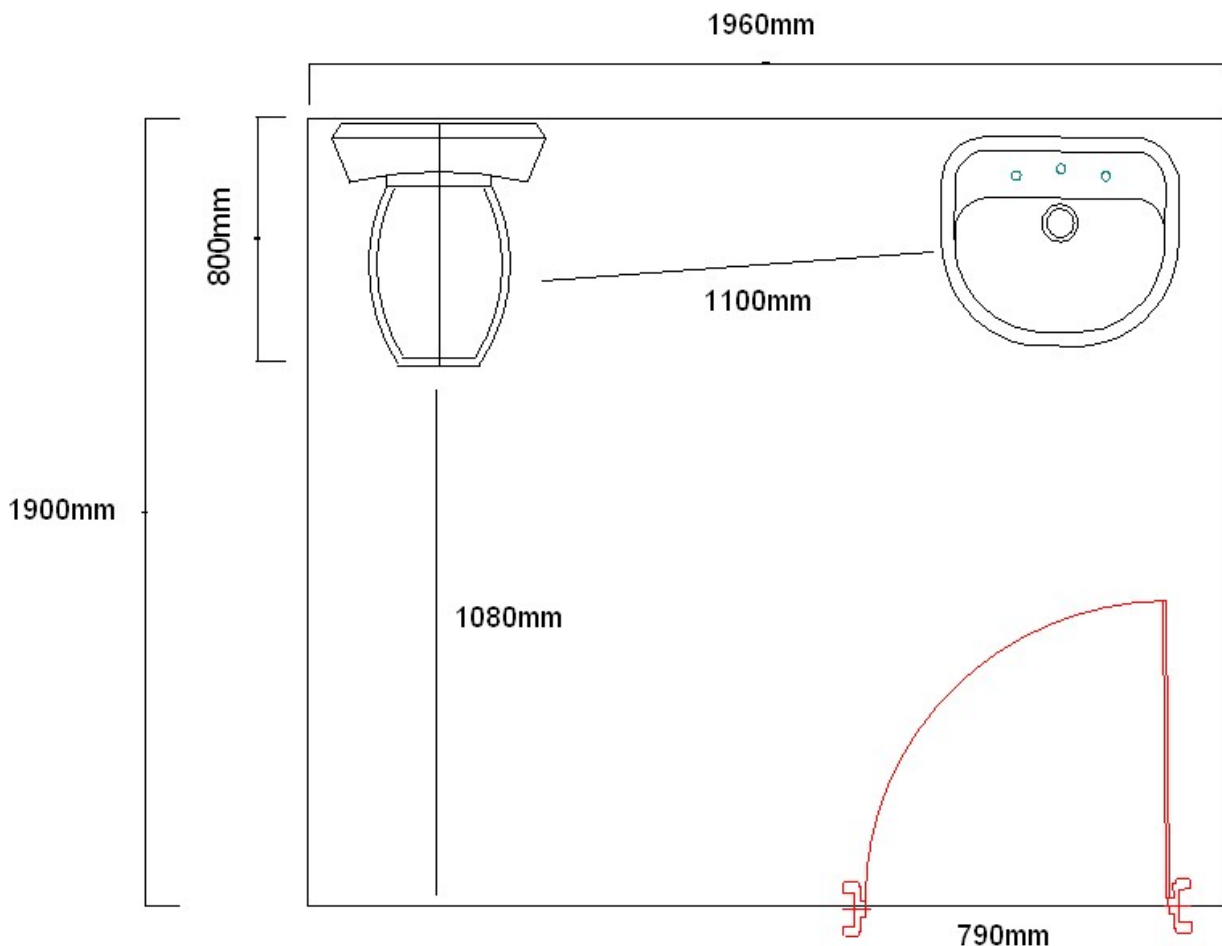
External access: Through an open doorway off the car park into a corridor which leads to the laundry and accessible toilet. The opening has a very short ramp with a gradient of approximately 1:5. There is sufficient circulation space for smaller style wheelchairs only, due to the 980mm wide corridor and a required change in direction into the toilet.

Toilet door: 790mm wide manual toilet door with no closer. It has a lever style handle and a large snib.

Pan height: 460mm.

Basin height: 80mm.

Lighting: Rocker style switch 990mm high.



Lift: One lift at the end of the foyer, lift level 1. The accessible room is on lift level 2.

The lift is 2100mm x 1560mm, with a clear open door width of 980mm. Direction of travel information is displayed both externally and internally, and there is a tonal announcement as the door opens. All buttons illuminate when activated and are within a height range of 900mm - 1160mm.

Accessible rooms: There is one accessible apartment on ground level, lift level 2. Guests will initially require directions from the accessible room to the lift and hotel reception / cafe. The room is designated as non smoking.

Emergency: There are no auditory or visual alarms within the hotel. Management report that there is an emergency procedure which includes a mechanism to telephone all rooms simultaneously to alert guests of any emergency.

Access to room: Level access off the car park.

Accessible room:

Door: Door width is 740mm with no closer. Access is directly into the kitchen and may be suitable for medium style wheelchairs as the kitchen bench protrudes into the door circulation space.

Access into the room is with a standard key.

Kitchen: 860mm high benches with a 580mm reach to the power point, located in a corner. The stove is gas, set at 860mm high with side mounted controls.



Living area: The kitchen, living and bedroom are within the one room. There is a small dining table and a wall mounted bench with 740mm knee clearance. There are firm cane chairs, 490mm high.

Bed: A single and double bed in the room are on castors. They are both 500mm high and soft. There is 130mm available space under the bed to accommodate a mobile hoist. The wardrobe is very high and has drawers at sitting height. With the beds in the present position there is 600mm clear space between the double bed and the wardrobe.



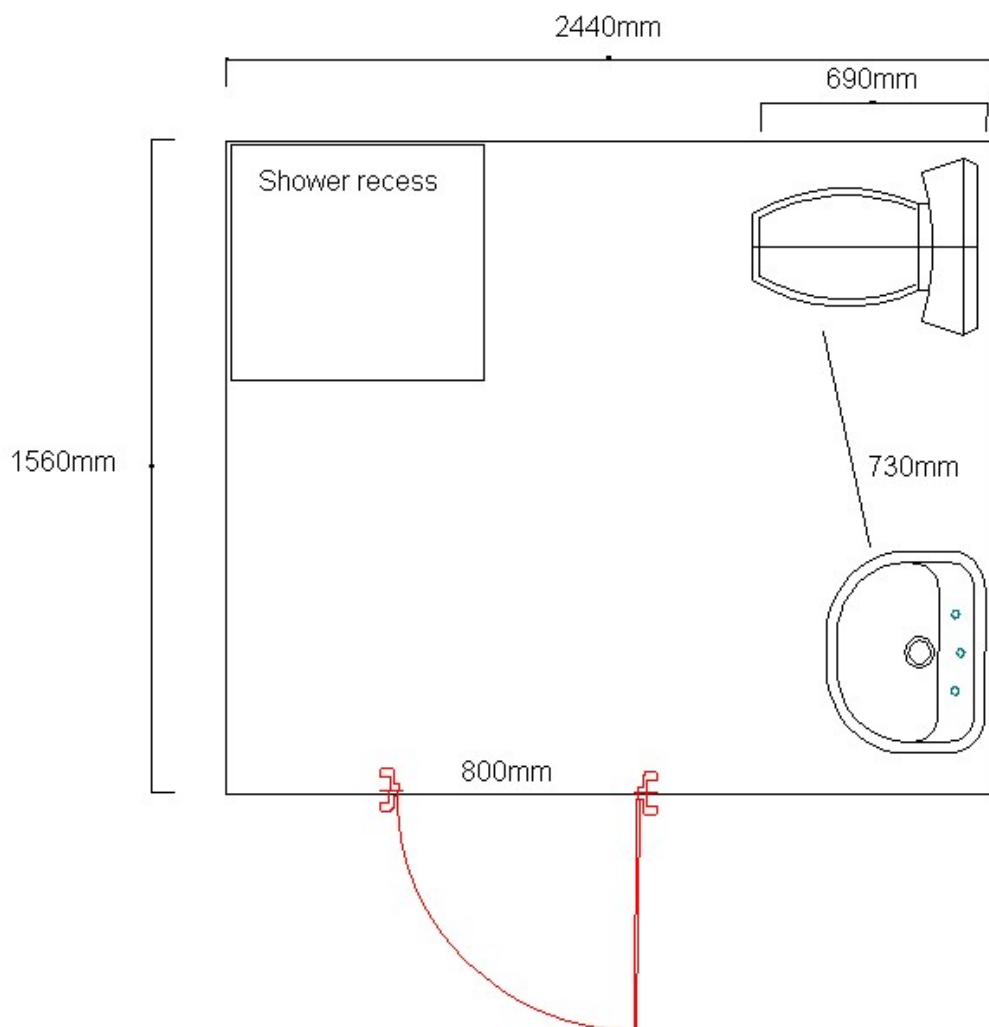
Bathroom:

Door: 800mm wide swing door with no closer and a circular door knob that has a push button lock. There is sufficient space for wheelchairs of all sizes to enter the bathroom.

Pan height: 450mm high.

Basin height: 880mm.

Shower: A 60mm ramp down to the 830mm x 770mm shower. A height adjustable shower chair is provided.



Room facilities:

- High wall mounted TV. Remote control is available from the reception.
- Volume control telephone
- Lowered light switches
- Remote controlled air conditioning

Guest Laundry: Located adjacent to the accessible room, off the car park. Entrance is at the end of the same 980mm wide corridor as the public unisex accessible toilet. There is laundry has a 660mm wide door that is held open. Small wheelchairs only could gain access to the laundry due to the door and corridor widths. There are two top loading washing machines and one front loading, floor mounted dryer. Payment is required.

Cimbalino**Opening hours:**

Open seven days a week from 7am to 5pm. The café will be opening in the evenings from March 2007.

Telephone: 9321 5013

Bookings taken: yes, not weekend breakfast.

Signage: Visible from the street front and easy to read identification signage.

External access: The café is directly off the hotel reception area and shares the same external access.

Entrance door: There are café tables and chairs within the hotel foyer and alfresco dining at the front of the café. Access into the café is directly off the foyer through an 860mm opening.

Internal: Level access throughout and there is sufficient space for wheelchairs of all style to access this facility.

Food counter: At sitting height, with food displays at sitting height.

Seating: Wooden chairs with no armrests and bench style seating. Tables have a central pedestal with knee clearance.

Menu: Table and whiteboard menus are black on white with a non standard printed font.

Information prepared for the City of Perth, January 2007.

Care has been taken to ensure the accuracy of this information however no guarantee is given that the facility is fully accessible.

Please advise the City of Perth of any access changes since publication.

This Report Template has been designed for use in the 'You're Welcome; WA Access Initiative' project only. It is not intended for any other purpose.

© Disability Services Commission 2005