

Saville Park Suites

Summary:

- Three spacious self contained apartments, all with large bathrooms.
- One room has a dual entry system of doors enabling it to have an adjoining room.
- One accessible car bay.

Name: Saville Park Suites

Location: 201 Hay Street.

Rating: Four star.

Telephone: 08 9267 4888

Web: www.savillehotelgroup.com

Accessible parking bay onsite: Yes.

Accessible drop off available: No.

Closest accessible public transport:

- Perth Train Station
- Red CAT stop 10, Hay Street
- Yellow CAT stop 7, Wellington Street

Accessible public toilet onsite: Yes

Accessible parking: One accessible bay in the basement level car park with vehicular access off Hay Street.

- Overhead clearance at the car park entrance is 2000mm
- 3140mm wide bay with a kerb bordering the drivers side
- Overhead clearance at the bay is 2560mm

The bay has ground markings and is adjacent to the lift door. Access to the lift lobby is via a kerb ramp (gradient 1:6) and a 750mm wide door with a lever handle that is light to operate and slow to close. Alternative access to a more spacious lift is around the outside of the lift lobby to a kerb ramp with a gradient of 1:8. A handrail on the left hand side ascending has been installed. This lift is outside of the lift lobby and can be accessed without negotiating through a doorway.

Pick up / set down bay: There is a standard ¼ hour parking bay at the front of the hotel on Hay Street. There is no kerb ramp to the pavement.

External access: The accessible entrance from Hay Street is via a level pathway set back and parallel to the footpath. The path is 1000mm wide at the narrowest point and the entrance to the path is identified with an overhead sign displaying the International Symbol of Access.



Main entrance: The main entrance has level access through wide, glazed, automatic sliding doors, leading to four internal steps with a handrail.

The accessible entrance is at the end of the walkway and through an 850mm door that is held open during the day.

There is a night key card entry set at 1300mm high and an intercom set at 1500mm high outside of the main door, leading to the four internal steps. People unable to use the steps may need to make alternative arrangements as the accessible door has no key card device.

Foyer: Low pile carpet and tiles, level throughout. Ample circulation space for all wheelchair sizes.

Lounge seating is provided in the foyer. The seats have armrests, are soft with a seat height of 380mm.

Reception: Counter is at standing height. Portage is available.

Business Centre: The Business Centre is located off a wide corridor behind the reception desk. It is available 24 hours per day and is unlocked by staff, on request. The entrance door is 750mm wide. Computers are on 720mm high desks, 1000mm wide with 690mm knee access.

Signage: Signage is generally large black upper case writing on a gold background. Staff assist as required.

Information: Printed information produced by the hotel is in good colour contrast and an easy to read font. There is a range of brochures at various heights within the hotel foyer.

Accessible public toilet:

Location: A unisex accessible toilet is located on the ground floor opposite the reception desk. The toilet is located at the end of an 1140mm wide corridor.

Signage: Direction wall signage can be seen from the hotel foyer.

Door: 760mm wide, medium/light to operate and fast to close. Access into the toilet is suitable for smaller style wheelchairs as space around outside side of the door is restricted by the 1140mm wide corridor.

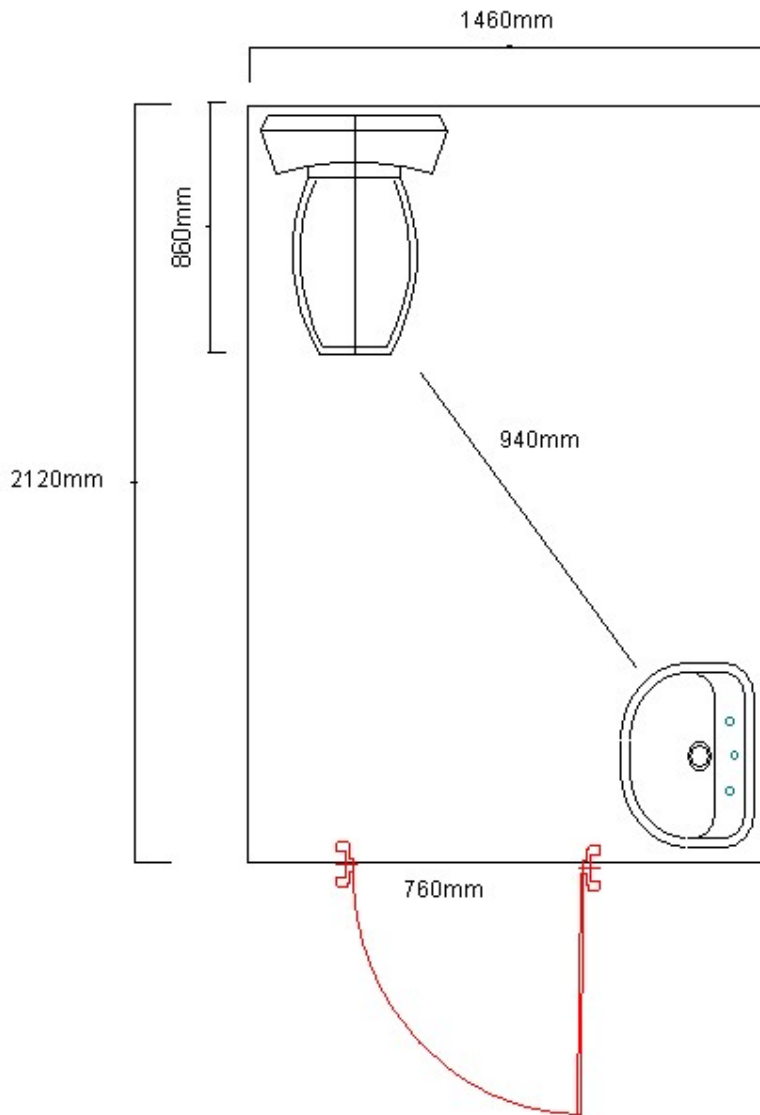
Lever style handle with small snib.

Pan height: 460mm.

Basin height: 770mm.

Lighting: A high light switch outside of the toilet.





Lift: A bank of three lifts, all provide access to all floors.

Two lifts are 1520mm x 2000mm, with a clear open door width of 980mm. The third lift is more spacious. Direction of travel information is displayed both externally and internally, and there is a tonal announcement outside. All buttons are within a range of 900mm - 1200mm high.

Accessible rooms: There are three accessible rooms within the hotel on similar positions on levels 4, 5 and 6. All rooms have similar facilities; however layouts may differ slightly. The room on level four was reviewed and has a dual entry system of doors that is able to be organised with an adjoining room.

Rooms are serviced daily and housekeeping staff are able to provide added assistance such as stacking the dishwasher or operating the overhead dryer.

Emergency: There are audible alarms in all rooms. Emergency egress maps are located at standing height. The fire stairs have standard sized landing.

Corridors to rooms: Corridors are wide, accommodating all wheelchair sizes.

Accessible rooms:

Doors: There is a dual entry with the external door. A 760mm wide opening door opens into a 1190mm wide corridor, requiring a change in direction. The second door leading into the living area is 730mm wide. Doors have lever handles and the internal door is able to be held open. Access may be suitable for smaller wheelchairs only due to the change of direction required within the corridor as well as the wall position restricting circulation space around the internal door.

The peep hole is set at standing height in the door. Access into the room is via a key card.

Kitchen: A galley style kitchen with 930mm space between benches set a 900mm high. There is a 600mm forward reach to the power point and an electric stove with controls at the rear of the unit.



Living area: The suite has a spacious lounge and dining room area and an outside balcony.

Living room couches are soft with armrests and a seat height of 400mm.

The dining table is 770mm high with 650mm knee clearance.

The desk is 750mm high with 610mm knee clearance.

The small balcony has a standard domestic sliding door with a 110mm step down.

Bedroom: A 760mm wide door with no close and a lever handle. There is sufficient space of all wheelchair styles to move around the door.

A queen size bed in the room is on castors, it is 440mm high and there is 120mm available space under the bed to accommodate a mobile hoist. The bed is firm and there is generous circulation space around the door.

The wardrobe has hanging space at standing height.

Bathroom:

Door: 765mm wide swing door with no closer, lever handle and small snib.

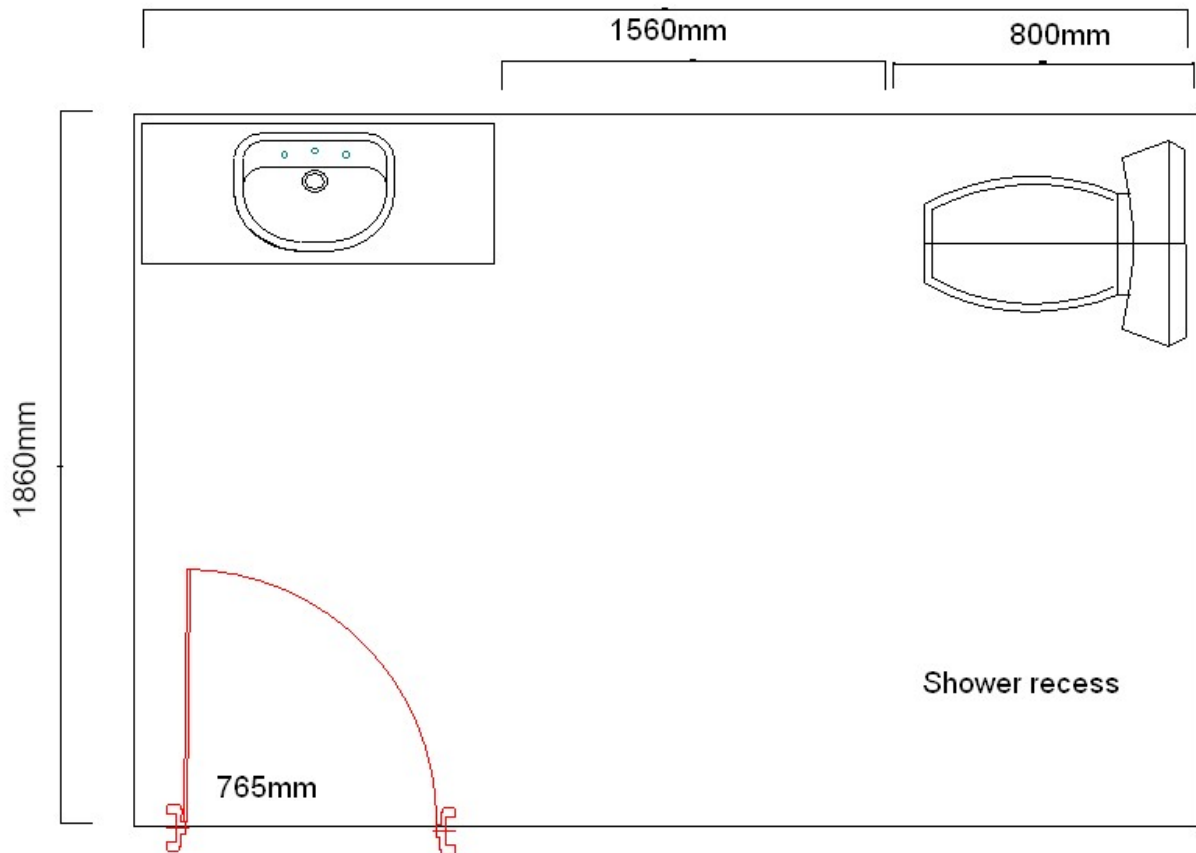
Pan height: 470mm high.

Basin height: 900mm.

Shower: Hand held shower and wall mounted fold down seat.



3550mm



Laundry: A top loading washing machine and a high wall mounted dryer are located within the bathroom.



Room facilities:

- TV with remote control
- Wall mounted air conditioning at standing height

Gym and Pool: Located on level 8. The gym equipment and pool are up 9 steps with a left and right hand handrail available.

Bensons:

Bensons is a café, restaurant and bar located on street level and can be accessed from the hotel foyer through a wide door that is held open. Alternative street access is off the walkway to the accessible hotel entrance. The door is 760mm wide, has a D style handle and is light to operate. Direct access off the footpath, on the corner of Hay and Bennett Streets is through a door leading to a two internal steps.

Bensons serves a buffet style breakfast and is open for lunch and dinner. There is sufficient space for all styles of wheelchairs to move through the restaurant. Movable tables have a central pedestal, are 710mm high with 680mm knee clearance. Moveable chairs are 480mm high without armrests.

Information prepared for the City of Perth, March 2007.

**Care has been taken to ensure the accuracy of this information however no guarantee is given that the facility is fully accessible.
Please advise the City of Perth of any access changes since publication.**

This Report Template has been designed for use in the 'You're Welcome; WA Access Initiative' project only. It is not intended for any other purpose.

© Disability Services Commission 2005