

## **The Sebel Residence East Perth**

### **Summary:**

- Two accessible rooms one on the fourth floor, one of the fifth. Each designated non smoking.
- Lift access to all floors.
- Well appointed male and female accessible toilets on the ground floor

**Name:** The Sebel Residence

**Location:** 60 Royal Street, East Perth

**Rating:** 4 star.

**Telephone:** (08) 9223 2500

**Web:** [http://www.mirvachotels.com.au/hotel\\_detail.asp?hotel=21](http://www.mirvachotels.com.au/hotel_detail.asp?hotel=21)

**Accessible parking bay onsite:** Yes

**Drop off available:** Yes

### **Closest accessible public transport:**

- Perth Train Station
- Yellow CAT stop 4 & 5, Royal Street

**Accessible public toilet onsite:** Yes

**Accessible parking:** Two accessible bays are located in the underground car park, both are 3000mm wide with an overhead clearance of 2700mm and 2470mm. Both have elevated signage and blue line markings.

Entry door from parking to the hotel lift lobby is 850mm wide. The door is heavy to open and fast to close.

**Pick up / set down bay:** City of Perth parallel parking pick up / set down bay (5 minute) is situated at the front of the hotel. The bay is 2900mm wide with a kerb ramp to the footpath.

**External access:** Level access from drop off bay and footpath to the hotel foyer, suitable to accommodate all wheelchair sizes.

**Main entrance:** Level access through wide, glazed, automatic sliding doors.

**Foyer:** Tiled foyer, level throughout. Ample circulation space for all wheelchair sizes.

Low bench style seating is provided in the foyer. No armrests.

**Reception:** Counter is at standing height. No better hearing card on display. Portage is available to the room.

**Telephone:** No public telephone in foyer.

**Internet access:** Computers are provided on high wall mounted bench. Bar style stools are provided.

**Signage:** No directional signage to hotel facilities. Staff assistance available.

**Information:** No brochures or printed material are displayed in the foyer. Staff assistance available.

**Accessible public toilet:**

Location: Two accessible toilets, one male and one female, are located on the ground floor behind the reception area.

The external corridor is 1300mm wide.

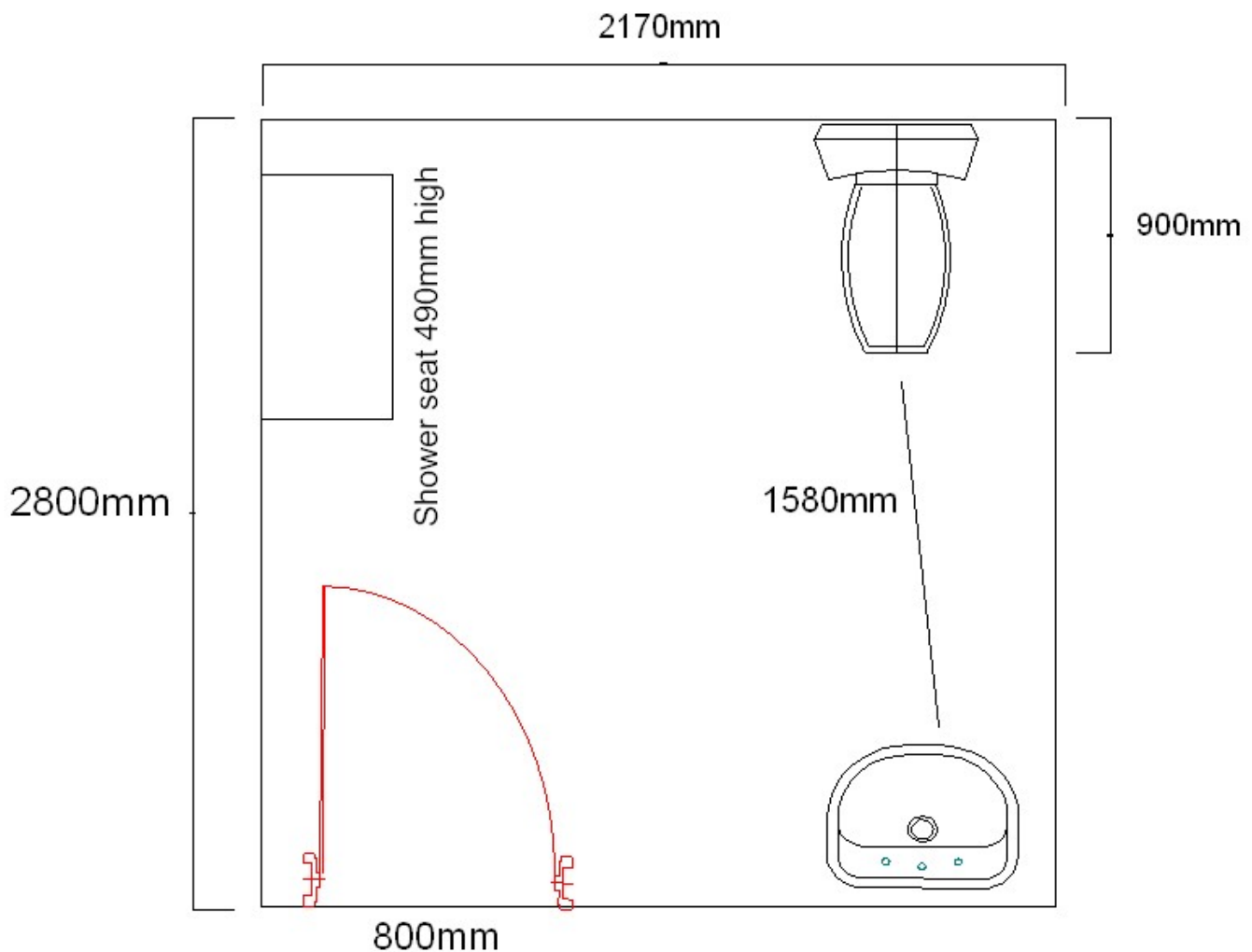
Signage: There is no directional signage to the accessible toilets from the reception.

Door: 800mm wide and light to operate. Lever style handle with large snib.

Pan height: 460mm.

Basin height: 740mm.

Lighting: Low switch in cubicle.





**Lift:** One lift provides access to all floors.

Walk through lift is 1200mm wide by 1840mm deep, with a clear open door width of 990mm. Direction of travel information is displayed both externally and internally. External control is at 920mm and internal controls are a maximum height of 1240mm. Controls have information in Braille and tactile formats and illuminate when pressed.

**Accessible rooms:** There are two accessible apartments within the hotel, one on level four and one on level five. They are arranged so that two apartments share a common locked foyer making it possible for the two apartments to be jointly occupied

**Emergency:** There are audible and alarms in the accessible apartments. Emergency egress maps are located behind the entry door at high standing height. There is a central open staircase, adjacent to the lift and opposite the accessible apartments.

**Corridors to rooms:** The apartment foyer is accessed from the spacious lift lobby. Suitable to accommodate wheelchairs of all sizes.

#### **Accessible rooms:**

Common Entry Foyer (to two apartments): The common door to the front foyer is 850mm wide, heavy to open and fast to close. Access into the foyer is suitable for all wheelchair types.

Door: Door width is 850mm. The entrance swing door is heavy to open and fast to close, with a lever handle. Access into the room may not be suitable for large style wheelchairs due to the restricted clearance on the latch side of the door internally – 300mm. Access into the room may not be suitable for larger style wheelchairs due to restricted space around the entry door.

Access into the room is via a key card.

Kitchen: The apartment has a self contained kitchen with 900mm high work bench, 520mm reach to the taps and a dish drawer style dishwasher. The kitchen has sufficient space to accommodate most wheelchair types; a side approach would be required.



**Laundry:** A front loading washer/dryer is provided at sitting height in the apartment.

**Lounge:** There is a small lounge area with remote controlled TV. A firm sofa bed, 420mm high is located in the lounge and a single lounge chair with armrests and separate footrest is provided. It is 430mm high.

**Balcony:** A balcony is located off the lounge, it has a standard domestic sliding door and a 140mm step down.

**Bedroom:** Entry door is 850mm wide. Access into and through the bedroom may suit small to medium wheelchair sizes due to the narrow corridor (1150mm) and reduced space around the bed.

The King size bed in the room is on castors, it is 580mm high and there is 130mm available space under the bed to accommodate a mobile hoist. The bed is firm.

The wardrobe is of standard design, with a floor mounted safe.



**Bathroom:**

Door: 870mm wide swing door that is light to open (no closer). Has a lever handle with a small locking snib.

Pan height: 450mm high.

Basin height: 760mm.

Shower: Height adjustable hand held shower and wall mounted fold up seat at 500mm.

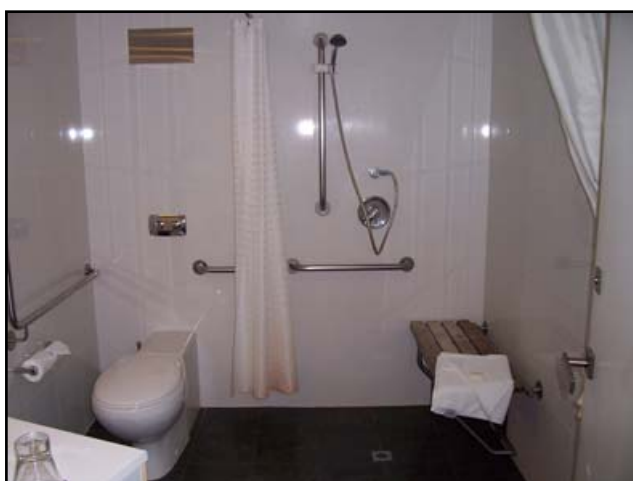
Emergency call buttons: No

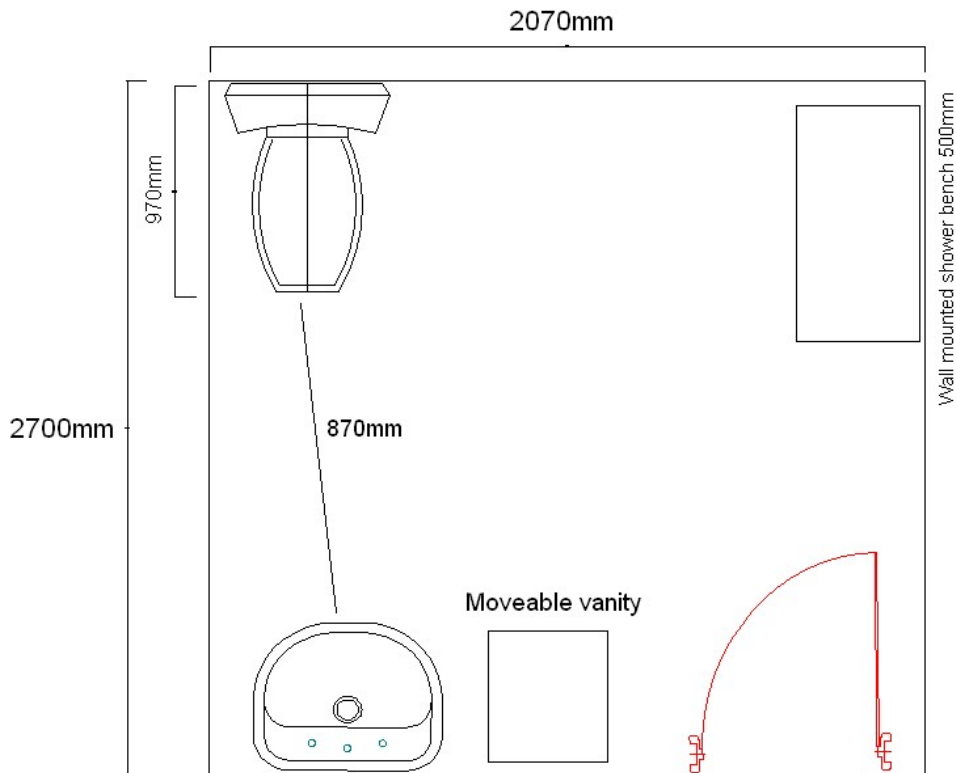
Shelf provided at sitting height, coat hook at very high standing height.

Hair dryer is stored in the drawer of the moveable vanity, located between the basin and door.

Lighting: Lowered switch in bathroom.

Note: Vanity can be moved.





### Room facilities:

- Remote controlled TV
- Volume control telephone
- Lowered light switches
- Low wall mounted air conditioner control

### Pool:

Location: Outside along timber boardwalk, overlooking river.

Door: High latch pool fence.

Style: Elevated (above ground style) pool with five steps up to the pool and spa.

**Gym:** Located on ground floor. Key locked at all times. Access is only with the assistance of reception staff.

**Information prepared for the City of Perth, December 2006.**

**Care has been taken to ensure the accuracy of this information however no guarantee is given that the facility is fully accessible.**

**Please advise the City of Perth of any access changes since publication.**

This Report Template has been designed for use in the 'You're Welcome; WA Access Initiative' project only. It is not intended for any other purpose.

© Disability Services Commission 2005