



you're welcome

Access Initiative

City of Perth

Duxton Hotel

Location: 1 St Georges Terrace, Perth.

Summary:

- Three accessible rooms, two are non smoking and all have adjoining rooms
- A well appointed public unisex accessible toilet on the ground floor
- Valet parking available, no accessible parking on site

Rating: Five star

Telephone: 08 9261 8000

Web: <http://www.duxton.com.au>

Accessible parking bay onsite: No valet parking available

Closest public transport:

- Many buses enter the city along St Georges Terrace
- Red CAT stop 12 on Hay Street

Accessible public toilet onsite: Yes

Accessible parking: 24 hour valet parking.

Drop Off: Vehicle drop and undercover set down is available in front of the main entrance.

External access: Level access from drop off bay to the hotel foyer, suitable to for people with larger style wheelchairs.



Main entrance: Level access through wide, glazed, swing doors. If closed a concierge is on site to assist.

Foyer: Tiles, level throughout. Ample circulation space for all wheelchair sizes. Lounge seating is provided in the foyer. The seats are soft with a seat height of 400mm and have armrests.

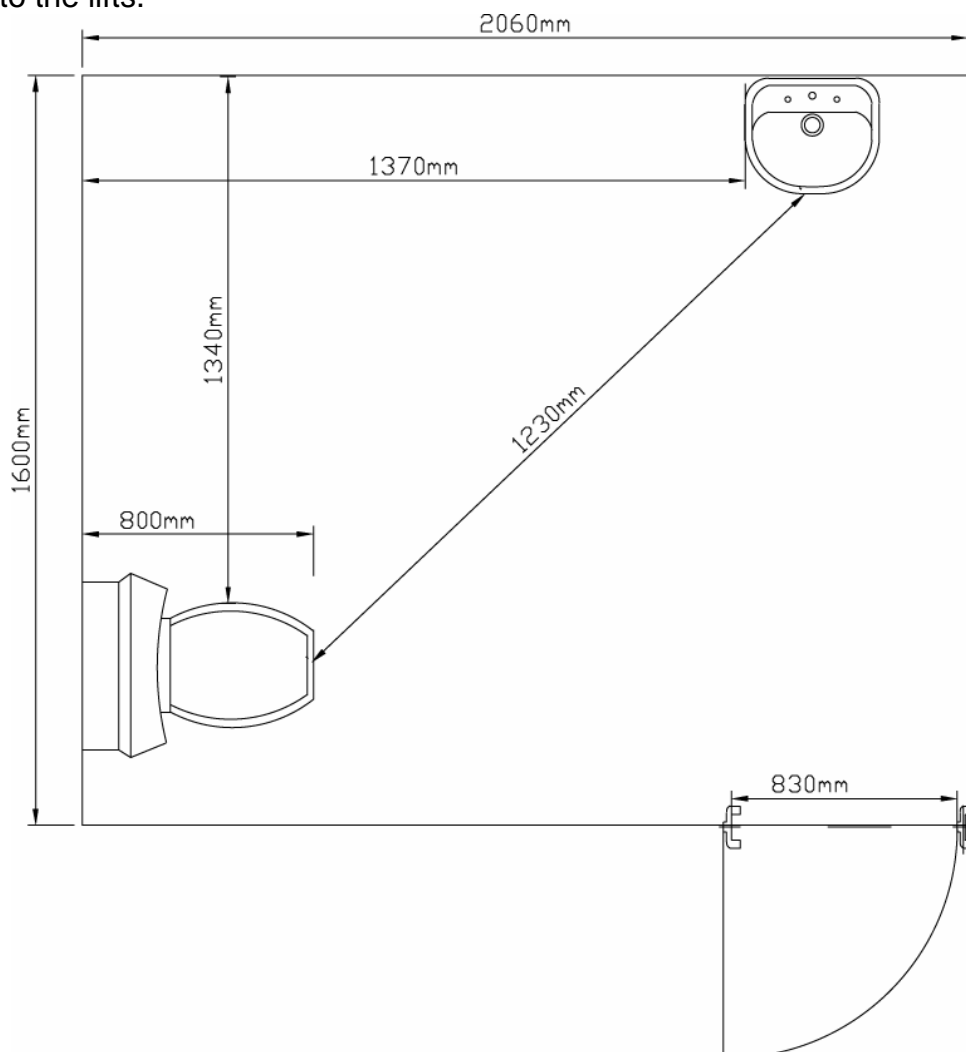
Reception: The counter is at standing height and there is no better hearing card on display. Staff have not received any formal disability awareness training.

Signage: All signage is clear, easy to read and in good colour contrast. There is directional signage to essential services and each floor has a directory board, at sitting height.

Information: An audio loop is located in the conference rooms. Printed information produced by the hotel is on high gloss paper with a small font. There is no TTY available.

Accessible public toilet:

Location: An accessible toilet is located on the ground floor past the reception desk adjacent to the lifts.



Signage:

There is directional signage to the toilets, but does not include information on the accessible toilet.

Door 830mm wide and light to operate.

Lighting: Lights are on at all times



Lever style handle

Pan height: 480mm

Basin height: 780mm



Lift: A bank of six lifts. The Club Rooms can only be accessed via the first two lifts only. Other lifts access all levels.

Lifts are 1670mm x 1230mm, with a clear open door width of 1040mm. Direction of travel information is displayed both externally and internally and there is a tone announcement only, externally. The highest control button is 1250mm high.

Accessible rooms: Three accessible rooms within the hotel, two on level one (smoking permitted) and the other is on level two (non smoking floor). All rooms have adjoining doors to adjacent rooms.

Emergency: There are audible alarms in all rooms. Emergency egress maps are located on the back of entrance doors at 1610mm high. There are no places of refuge on emergency stairs, suitable for wheelchairs.

Corridors to rooms: Corridors are wide, accommodating all wheelchair sizes

Accessible rooms:

Door: Door width is 790mm. The entrance swing door is heavy to open and slow to close, with a circular handle. Access into the room is suitable for all wheelchairs styles to enter, there is sufficient space to move around and access all facilities.

There is a peep holes set at 1640mm high. Access into the room is via a card swipe.

Tea and coffee: Facilities are at sitting height. Access suitable for all types of wheelchairs, however a side approach would be required.

Lounge: Lounge seating is located in the bedroom, near the bed. One tub style chair with armrests and a seat height of 450mm is provided.

Bed: A king size bed which can be converted to two single beds is on castors, it is 450mm high and there is 120mm available space under the bed to accommodate a mobile hoist. The bed is firm.



Bathroom:

Door: 820mm wide swing door that can be held open, has a circular handle.

Pan height: 460mm high

Basin height: 830mm

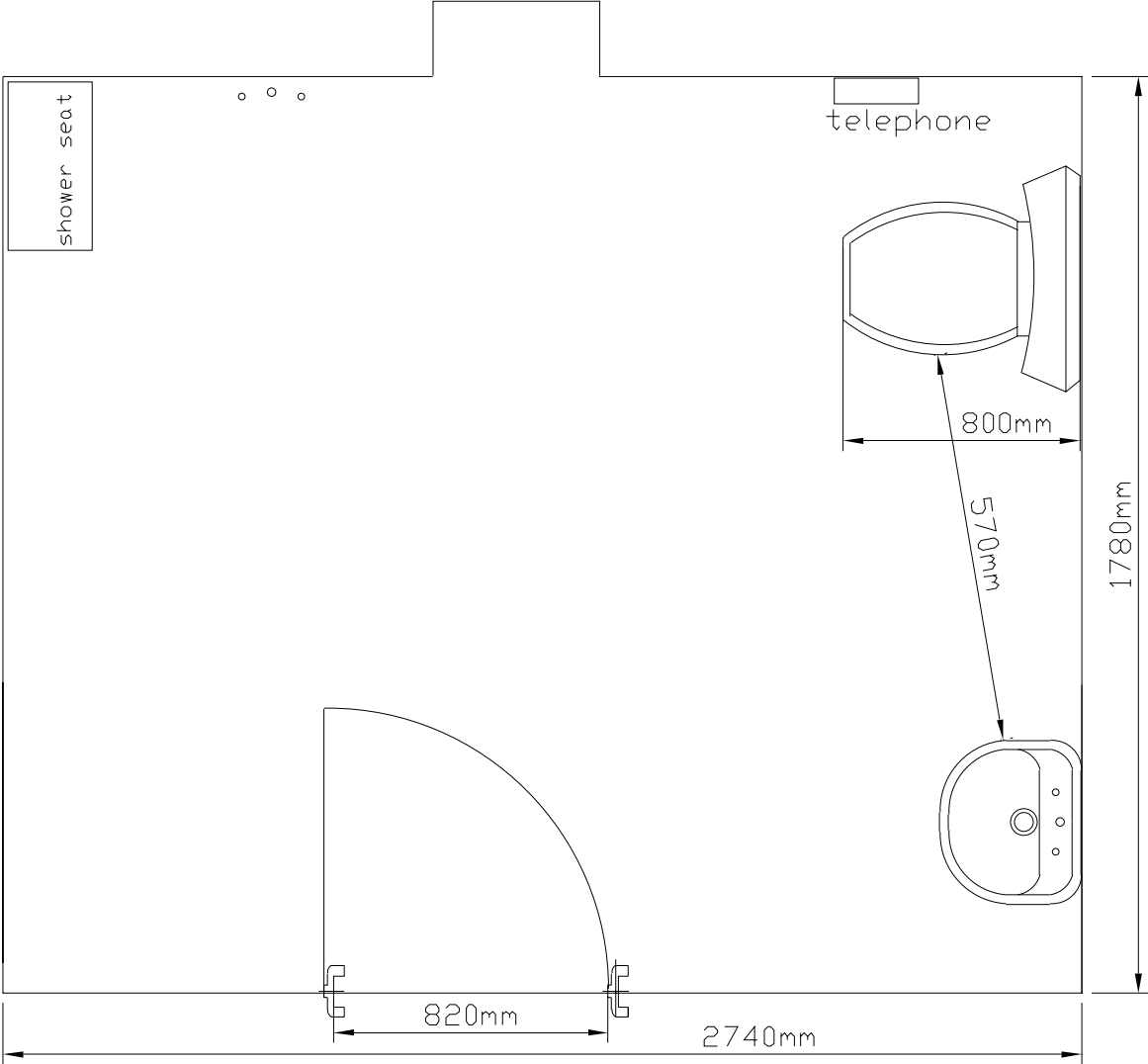
Shower: Hand held shower and wall mounted fold down seat

Hair dryer and coat hooks (1500mm high) are provided

A telephone that could be used in an emergency is located next to the toilet pan



Bathroom Plan.



Room facilities:

- TV which is not Teletext enabled
- Volume control telephone
- Air conditioning with wall mounted controls

The Duxton Grill:

This is a public restaurant on the ground floor with wide level access from the left hand side of the foyer. It provides table service, a self serve buffet for breakfast and a bar. The buffet is at sitting height and a side approach is required. The coffee counter and payment counter are at standing height. Staff are available to assist if required. Tables have a central pedestal and chairs, with armrests, are moveable. Menus have poor colour contrast and a small font.

The Bar:

There is wide level access from the right hand side of the foyer. The main doors are held open during opening hours and there is sufficient space for wheelchairs of all sizes to move through the bar area. The bar is at standing height. There is low lounge seating at a height of 40mm with armrests.

Gym:

Location: In on the lower level and accessed via the lifts.

Door: Wide double swing with D style handles. The door is heavy to open and fast to close. Entry is via a swipe card to enter and a push button on the left hand side of the door to exit. Both are set at 1370mm high.

Circulation space around the gym equipment is restricted to smaller style wheelchairs. There is clear directional signage to the pool, sauna and change rooms; however these do not have any accessible features and there are 25 steps to the swimming pool.

Guest Laundry: An in house laundry service is provided. Charges apply per garment.

Information prepared by: Occupational Therapy students from the School of Occupational Therapy at Curtin University of Technology, 2005.

Care has been taken to ensure the accuracy of this information however no guarantee is given that the facility is fully accessible.

Please advise the City of Perth of any access changes since publication.

This Report Template has been designed for use in the 'You're Welcome; WA Access Initiative' project only. It is not intended for any other purpose.

© Disability Services Commission 2005