



**CITY OF
PERTH**
City of Light

Sustainability Strategy

2022 – 2032



Acknowledgement of Country

The City of Perth kadjitj kalyakool moondang-ak kaaradj midi boodjar-ak ngala nyinyiny, Wadjak Noongar yoongar wer bandany Aboriginal yoongar yooarme boodjar-ool.

Ngalang woola Boorloo wer Derbal Yerrigan kalyakoorl, wongin kadadjiny wer, wirn-yoodan.

Ngalang kadjitj Birdiya koorra wer yeyi moondang-ak kaaradjiny.

The City of Perth acknowledge the traditional custodians of the land we are situated on, the Whadjuk people of the Nyoongar nation and Aboriginal people from other lands.

We celebrate the continuing traditions, living culture, and the spiritual connection to Boorloo and the Derbal Yerrigan.

We offer our respects to Elders past and present.





Contents

Our Sustainability Journey	4
Defining Sustainability	4
Commitment	7
Strategic Alignment	8
Aligning with Global Goals	10
Materiality Assessment	12
Themes	14
Theme 1: A Climate-Focused City	16
Theme 2: A Green City	18
Theme 3: A Resource-Conscious City	20
Theme 4: A Well-Planned City	22
Theme 5: A Thriving and Inclusive City	24
Theme 6: A Safe and Healthy City	26
Theme 7: A Prosperous City	28
Theme 8: A Well-Governed City	30
Putting this Strategy into Action	32
Monitoring Progress	33
Outcome Index Table	34
Sustainability Framework	36
Glossary	38

Our Sustainability Journey

The City's inaugural Sustainability Strategy, adopted by Council in 2022, set us on a path towards a thriving future, with a vision to balance environmental, social and economic systems for the benefit of current and future generations. Built on the 'sustainable' strategic pillar in our Strategic Community Plan 2022–2032, we recognised from the outset that prioritising sustainability in every action was essential if we were to avoid imposing costs on those who come after us.

In 2025, we undertook a comprehensive review of our Sustainability Strategy, driven by our commitment to continuous improvement and the need to ensure our strategy remained relevant and effective in a rapidly changing world. The review sharpened our focus, enhancing strategic alignment between the strategy's themes and our activities across the organisation.

Acknowledging our current progress, the updated strategy offers tactical guidance to integrate the themes and their objectives into the City's broader strategies, plans and operations. We have introduced improved metrics for each theme, with defined 'outcomes' and 'measures of success', to better support our strategic direction and ensure our accountability as an organisation.

Embedding sustainability performance expectations across all City functions ensures that sustainability is more than a strategic priority by becoming an operational imperative, integrated into all decision-making and work the City delivers. Careful consideration of the balance between social, environmental, and economic factors will be essential in achieving our sustainability outcomes. The strategy reinforces our commitment to integrating sustainability at every level and in everything we do.

Our sustainability journey reflects our dedication to learning, adapting, and leading by example. This refreshed strategy is underpinned by a strengthened resolve to create a resilient, inclusive, and prosperous city — one that is prepared for the challenges ahead and leaves a positive legacy for generations to come.

Defining Sustainability

Sustainability is not a new concept; it has long been embedded in the practices of Indigenous peoples who have lived in harmony with the natural environment, understanding its limits, cycles, and changes. This deep connection with nature aligns with the modern definition of sustainability, which was officially outlined in the 1987 Brundtland Report, *Our Common Future*.

The report defined "sustainable development" as meeting the needs of the present without compromising the ability of future generations to meet their own needs.

Recognising the importance of this principle and its alignment with both the *Local Government Act 1995 (WA)* subsection 3.1 (1A) and the *City of Perth Act 2016*, we define sustainability for the City of Perth as:

'Ensuring nature, social and economic systems are in balance for current and future generations.'

This definition reflects our commitment to fostering a sustainable future where the wellbeing of people, the environment, and the economy are equally prioritised.





Our Commitment

In our pursuit of a sustainable future, we recognise the interconnectedness of our actions ‘as an Organisation’, ‘as a Capital City’ and ‘as a key Global City’.

Our commitment to sustainability will guide us, ensuring that we foster a city that is resilient, thriving, and responsible to both our community and the planet. The following commitments reflect our dedication to integrating sustainability into the core of our organisation, our city and our place in the world:

Our Organisation

We will embed sustainability in everything we do and decisions we make, understanding that without sustainability, our actions will impose a social, economic or environmental cost on future generations.

Our World

We will acknowledge our place in a globalised world, sharing in the challenges and leveraging opportunities that creating a sustainable world presents—looking outward to the world as the world looks in on us.

Our City

We will be a city with flourishing social, environmental and economic systems, working in harmony to sustain a thriving and vibrant city for current and future generations.

Our Role

We will acknowledge our place in a globalised world, sharing in the challenges and leveraging opportunities that creating a sustainable world presents—looking outward to the world as the world looks in on us.

Service Provider

As a service provider we will lead by example, taking responsibility for the impact of our operations, setting clear targets and implementing measures to enhance performance in areas directly under our control, contributing to our long-term future.

Regulator

As a regulator we will embed sustainability in our regulatory functions, striving to achieve the best possible sustainability outcomes across all areas of influence.

Advocator and Facilitator

As an advocator we will amplify the voice of our community, advocating for change on key issues beyond our control to address the needs and aspirations of our community.

As a facilitator we will enable initiatives where community participation is expected to deliver better, more effective and efficient outcomes.

Partner

As a partner we will actively build strategic partnerships with all levels of government, the private sector and other stakeholders; bringing stakeholders together, creating collaborative opportunities and driving collective value for sustainable development.

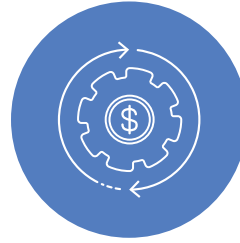
Strategic Alignment



Liveable



Sustainable



Prosperous

The Sustainability Strategy builds on the three pillars of the City of Perth Strategic Community Plan 2022-2032, in particular the Sustainable Pillar –aspiring for a city where nature, social and economic systems are in balance.

The extract below, taken from the Strategic Community Plan, showcases where the Sustainability Strategy (the strategy), this guiding

document, fits into the integrated planning framework of the City and guides operational plans and strategies across the organisation, complementing other guiding documents including the Economic Development Strategy, Social, Health and Wellbeing Strategy, Long Term Financial Plan, Asset Management Plan and the Workforce Plan.



Informing documents



FIGURE 1 Informing documents hierarchy (from April 2025)

The strategy translates the materiality assessment and outlines key themes aligned with these material aspects, while also localising the United Nations’ Sustainable Development Goals. Each theme includes defined ‘Outcomes’ and corresponding ‘Measures of Success’, which guide the City in relation to each theme. This strategy acknowledges the current status of our progress in each theme and offers tactical guidance for integration of the theme and its aspects into the City’s broader strategies, plans and operations.

Aligning with Global Goals



The United Nations' Sustainable Development Goals (SDGs), adopted by all UN member states in 2015, offer a comprehensive global framework aimed at creating a sustainable world by 2030. To effectively apply these goals at a local level, a process known as 'localization' is crucial. This involves adapting the SDGs to fit the specific context and needs of cities, ensuring they address local challenges while contributing to global sustainability. The City of Perth's Sustainability Strategy localises the SDGs, aligning them with the City's unique priorities and setting a clear path for integrating sustainability into all plans and actions.

Sustainability encompasses more than environmental issues, and for cities, it requires a broad, holistic approach. The Quadruple Bottom Line (QBL) framework is an effective way to achieve this, incorporating four key dimensions, environmental, social, economic and governance. These dimensions must be considered together, fostering a holistic view and ensuring a balance across whatever we do.

1. **Environmental:** Achieved when humanity's consumption does not exceed the planet's capacity to regenerate resources and when pollution and greenhouse gas emissions remain within the Earth's restorative capacity. It's about balancing development with environmental preservation for future generations.
2. **Social:** Ensures communities thrive by upholding fundamental needs such as health, security, housing, water access and transportation. It also promotes social equity, inclusion, and wellbeing, while respecting labour, cultural, and personal rights.
3. **Economic:** Involves maintaining secure local livelihoods and equitable access to resources ensuring no exploitation of depleting resources. It ensures that everyone, from individuals to large organisations, has the equitable means to meet their needs while safeguarding for future generations.
4. **Governance:** Focuses on partnership, collaboration, accountability, strong organisations and transparency. It ensures participative planning, evidence-based strategies, and robust reporting to align actions with stakeholder expectations, ensuring that efforts remain effective.

The diagram below illustrates how the SDGs support the quadruple bottom line for embedding sustainability across all aspects of the city. Together, these four dimensions form a holistic approach to sustainability and the SDGs provide a globally recognised benchmark that supports this approach, driving positive outcomes across environmental, social, economic, and governance aspects of the city. By aligning its strategies with the SDGs, the City of Perth ensures that its growth and development contribute positively to both local and global sustainability goals.

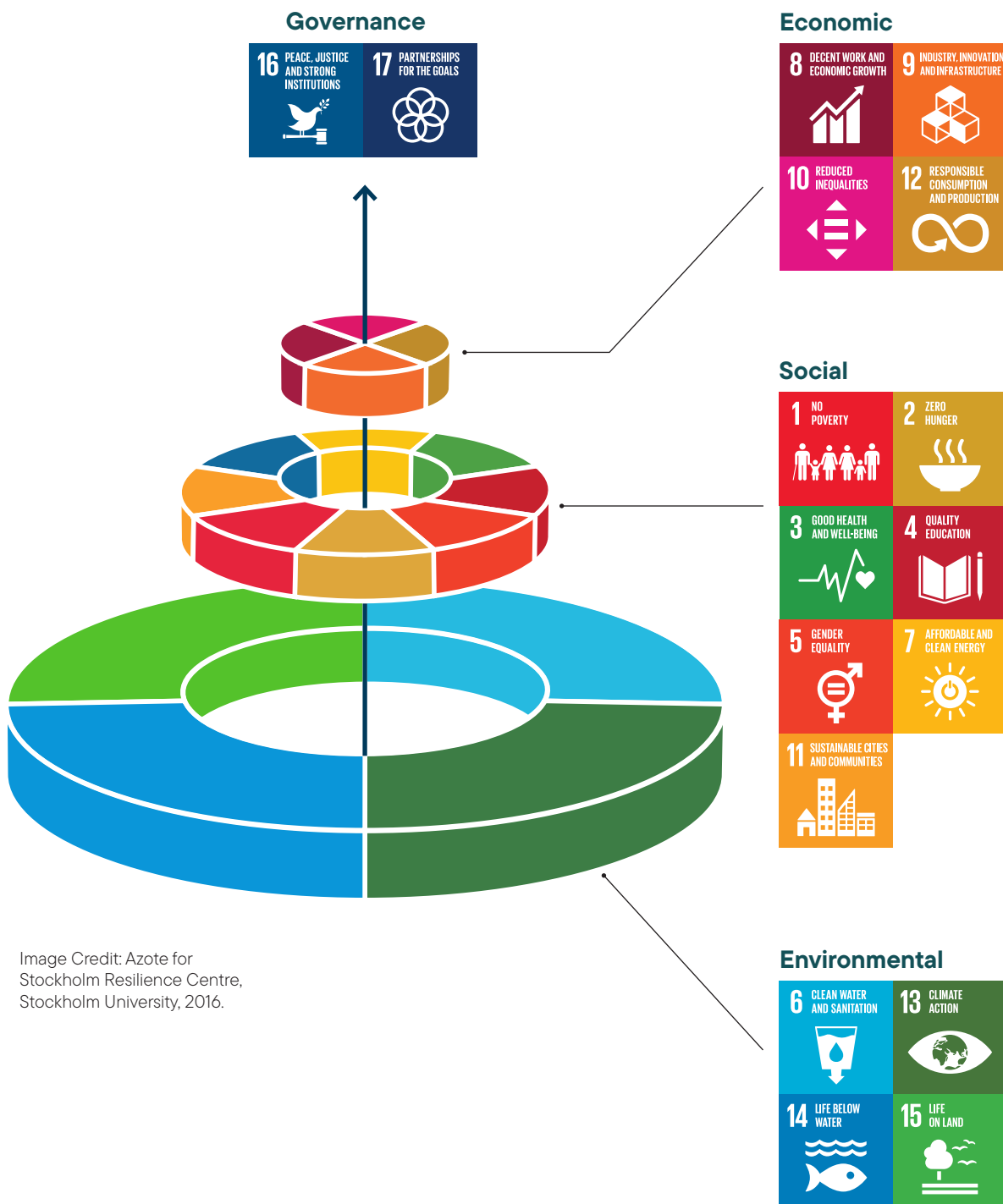


Image Credit: Azote for Stockholm Resilience Centre, Stockholm University, 2016.

Materiality Assessment

A materiality assessment is essential for identifying and prioritising the sustainability issues that matter most to an organisation and its stakeholders. It ensures focus on areas that will deliver the greatest long-term value and sustainable outcomes.

For the City of Perth, the materiality assessment guided the development of the sustainability strategy, addressing both organisational operations and community needs. Through an online survey, City leadership and stakeholders ranked potential sustainability themes based on their importance. This process provided valuable insights into the issues that would most impact the City's future sustainability efforts.

The assessment identified eight key material aspects:

Prioritising Action



While other issues were considered, these eight aspects were chosen for their broad relevance and impact. Limiting the number of material aspects allows the City to focus on high-priority areas that resonate within the organisation and the community, ensuring a clear, actionable strategy.

As part of the strategy refresh, these aspects were reviewed with the City's management and executive leadership to confirm their ongoing relevance and alignment with current business priorities. This ensured that the material aspects reflect the City's evolving needs and challenges. This engagement across all staff is key to embedding sustainability in business-as-usual (BAU) practices. Supported by the Sustainability Service, each service unit will take responsibility for either corporate or community sustainability aspects, building on existing progress to drive further impact.

The materiality assessment is the cornerstone of our strategy, providing a clear, actionable priority that helps us prioritise the issues that matter most. Through the initial development and subsequent refresh, we've ensured that the City's sustainability efforts are both aspirational and achievable, focused on making a meaningful impact.



Themes

Guided by the materiality assessment, the strategy identifies eight themes as key in their entirety to harmonise the social, environmental, economic and governance factors that support sustainability for the City.

These eight material themes, align with the United Nation’s Sustainable Development Goals and provide robust alignment of their localisation for the City.

These themes along with their rationale for existence and alignment with SDGs is as follows:



Theme 1. A Climate-Focused City

Rationale: A commitment to reducing greenhouse gas emissions and enhancing climate resilience is a key priority to prepare for future climate impacts and managing the physical, transitional and reputational risks appropriately, whilst leveraging socio-economic opportunities of the transitioning low-carbon economy.



Theme 2. A Green City

Rationale: Nature-focused initiatives such as expanding green spaces, restoring biodiversity, and using water-sensitive urban design to improve sustainability and enhance the community’s wellbeing.



Theme 3. A Resource-Conscious City

Rationale: A focus on reducing resource consumption, promoting renewable energy, and improving waste management is critical to minimise environmental footprints and support sustainable growth. This focus helps lower operational costs and ensures that future generations have access to depleting resources for their needs.



Theme 4. A Well-Planned City

Rationale: Effective urban planning that incorporates sustainability is essential for managing growth without sacrificing quality of life or the environment. It ensures that development supports a low-carbon, environmentally conscious, liveable, and prosperous city ensuring our land resources are optimally utilised for community wellbeing today and for the growing population of the future.



Theme 5. A Thriving and Inclusive City

Rationale: It is vital to ensure that sustainability benefits reach all. This aspect focuses on a socially cohesive city where everyone has an opportunity to contribute to and benefit from a sustainable future.



Theme 6. A Safe and Healthy City

Rationale: A key focus on social and environmental risks and ensuring access to clean air, blue spaces, and green spaces is essential for sustainability. Promoting active transport and resilience to extreme weather events helps reduce risks for communities, making Perth a safer, healthier city for all.



Theme 7. A Prosperous City

Rationale: Fostering economic sustainability supports innovation, creates jobs, strengthens local resilience, provides a reputational uplift and ensures local businesses thrive in a low-carbon economy. This theme focuses on boosts to economic growth and ensures that Perth's economy remains competitive and adaptable in the transitioning green economy and enhances sustainability for the future.



Theme 8. A Well-Governed City

Rationale: Effective governance embeds sustainability into decision-making, ensuring collaboration, transparency and alignment with long-term sustainability goals. A focus on governance fosters trust and encourages maturity for a transformation towards a sustainable future.



A Climate-Focused City

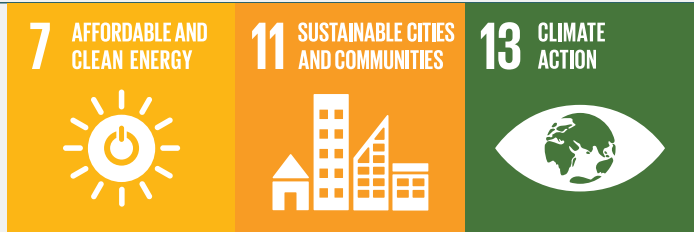
Theme Objective:

To reduce the city’s greenhouse gas emissions and enhance the city’s resilience to climate change.

The City is committed to reducing greenhouse gas emissions while enhancing resilience to climate impacts, ensuring that the city is prepared for future climate scenarios through both mitigation and adaptation. This includes prioritising and transitioning to lower emission energy sources, implementing low emissions transport and materials, improving management practices for infrastructure and green assets to withstand climate-related risks, supporting vulnerable communities, de-risking supply chains, and investing in climate-resilient infrastructure and operations.

Through these efforts, the City aims to lead by example, creating a sustainable, low emissions, climate-focused urban environment for today and into the future.

OUTCOMES	MEASURE OF SUCCESS			
		Short Term (2026)	Medium Term (2029)	Long Term (2032)
1.1 Organisation greenhouse gas emissions reduced	Scope 1 & 2	10% reduction in Scope 1 & 2 emissions from FY2023/24	Net zero Scope 1 & 2 emissions	
	Scope 3	Establish baseline and accounting system	Reduction in Scope 3 emissions in line with science-based targets	
1.2 Organisational physical, transitional and reputational climate risks are identified and understood across assets and operations		Establish and identify risks across strategic and operational levels	Risks well understood across scenarios and controls implemented and matured across the City	Risk management business as usual with value at risk appropriately included across City’s plans
1.3 Community greenhouse gas emissions reduced		Establish baseline	Reduction in emissions in line with state government target for net zero by 2050	



Tactical Guidelines

- Develop and implement systems to baseline, track and reduce the City's greenhouse gas emissions, tracked across all service areas and regularly report on progress and performance against science-based targets.
- Ensure climate-resilience across the City's infrastructure and green assets with robust understanding and control measures for associated climate risks.
- Develop a climate change mitigation transition plan for all services of the City.
- Develop measures for impacting community emissions and community's resilience to climate change.
- Transition to low emission and secure alternatives for energy across City owned buildings, assets and local infrastructure.
- Promote active transportation and increase percentage of travel via these modes.

Where we are

- Emissions inventory for the organisation established since FY2022/23.
- Progressing mitigation efforts through renewables and zero emissions fleet across the organisation.

Informing Documents

- Corporate Business Plan
- Long Term Financial Plan
- Asset Management Plans
- Climate Action Plans (TBD)



5,154 tCO₂e

Scope 1 & 2 organisation
emissions (FY2023/24)

A Green City

Theme Objective:

To preserve and restore biodiversity and integrate nature into the urban environment.

The City strives to be a green, biodiverse urban environment where nature and city life coexist symbiotically. This includes increasing the amount of urban greening while also focusing on restoring local ecosystems and protecting natural habitats.

By increasing urban greening and enhancing urban biodiversity, the City aims to improve air quality, reduce urban heat, support wildlife and vegetation and provide the community with accessible spaces for recreation and wellbeing. These efforts also correlate directly with 'A Climate-Focused City' and help in absorbing carbon emissions, mitigating flooding, and reducing the urban heat island effect, whilst recognising the community's vulnerability to certain climate risks.

OUTCOMES	MEASURE OF SUCCESS		
	Short Term (2026)	Medium Term (2029)	Long Term (2032)
2.1 Urban tree canopy across the city is preserved and progressively increased	Establish four-yearly audit program of street and parkland trees Establish four-yearly canopy cover survey program	Tree canopy in the public realm progressively increased in line with City's tree canopy target of 30% to 2036	
2.2 Biodiversity across the city is maintained	Establish biodiversity baseline for the city	Biodiversity across the city is preserved and progressively increased	
2.3 Urban heat island mitigated with a reduction in temperature hot spots across the city	Establish four-yearly thermal imaging survey program	Progressive reduction towards zero hotspots in the city	
2.4 Amount of green cover and green infrastructure in City assets in increased	Establish a system for consideration of green cover and green infrastructure in City assets	Progressive increase in green cover and green infrastructure across the City's assets	



Tactical Guidelines

- Expand the city’s tree canopy and green spaces, including urban parks, streetscapes, living walls, roofs, podia and community gardens.
- Biodiversity conservation and restoration of habitats across the city.
- Implement strategies such as increased vegetation cover, providing irrigation and planting trees to provide shade and urban cooling in public spaces to reduce urban heat island effects.
- Designing new spaces and places to enhance greening and biodiversity outcomes.

Where we are

- International recognition as a Tree City of the World for leadership in urban forest management for two consecutive years (2023 and 2024).
- 16,493 trees and 247 plant species across the City’s parks, reserves and open spaces.
- 500 attendees at the 2024 annual Tree Month Festival.
- Over \$1 million invested to combat polyphagous shot-hole borer.
- Participate in the annual WA Tree Festival.

Informing Documents

- Urban Forest Plan 2016-2036
- Annual Infill Street Tree Planting Program
- Street Tree Guide 2023
- Urban Greening Strategy 2023-2036
- Open Space Plan 2023-2038
- Integrated Water Plan 2023-2028
- Local Planning Strategy 2023
- Local Planning Scheme No. 3 (under development)



19%

tree canopy cover in the public realm (2016)



2,000

(approximately) new street trees since 2016



16,493

trees and 247 plant species (2025)

A Resource-Conscious City

Theme Objective:

To minimise resource consumption and waste production.

The City is committed to fostering a culture of resource efficiency and sustainability across the organisation and our community. This includes reducing the use of resources like fuels, electricity, water, eliminating waste and pollution and increasing recycling, composting and renewable energy sources across the City’s operations and encouraging the community to adopt sustainable practices.

By adopting a more sustainable approach to resource consumption, the City aims to reduce its environmental footprint while supporting economic efficiency. These efforts also correlate directly with ‘A Climate-focused City’ to reduce greenhouse gas emissions and present a huge opportunity for leveraging the benefits of global transition to a resource constrained economy.

OUTCOMES	MEASURE OF SUCCESS			
		Short Term (2026)	Medium Term (2029)	Long Term (2032)
3.1 Organisation electricity consumption from the grid reduced		Establish systems and processes for reduction	40% or more reduction from baseline year	50% or more reduction from baseline year
3.2 Organisation fossil fuel consumption reduced	Transport	Undertake fleet and plant review	100% of light fleet are zero emissions vehicles	100% of heavy fleet are zero emissions vehicles
	Buildings and other	Establish systems and processes to reduce/remove	Fossil fuel consuming assets replaced with zero-emissions energy sources at end of life	
3.3 On-site renewable energy generation increased	Organisation	Establish solar and battery program with optimised business case and effective business models	1MW or more capacity of on-site renewable energy installed with appropriate storage capacity	On-site renewable energy generation and storage optimised across portfolio
	Community	Establish baseline	Increased uptake of on-site renewable energy generation	
3.4 Scheme water consumption reduced	Organisation	Establish systems and processes to reduce	20% reduction from baseline year	
	Community	Raise community awareness	10% reduction from baseline year in partnership with state agencies	
3.5 Organisation groundwater consumption aligned with annual irrigation demand		To be maintained in line or below state government targets for reduction in groundwater abstraction		
3.6 Percentage of waste diverted from landfill increased		To meet or exceed the state government targets for diversion rates		
3.7 Waste recovery enhanced	Municipal solid waste	Establish a baseline on circular economy	Municipal solid waste recovery rates progressively improved across the city	
	Commercial and demolition waste	Establish a baseline on industry symbiosis in the city	Engagement on commercial waste and demolition waste recovery in the city progressively increased Increase in use of recycled materials in development and construction across the City’s infrastructure	

8 DECENT WORK AND ECONOMIC GROWTH



9 INDUSTRY, INNOVATION AND INFRASTRUCTURE



12 RESPONSIBLE CONSUMPTION AND PRODUCTION



Tactical Guidelines

- Drive city-wide energy efficiency initiatives and awareness programs to accelerate the adoption of renewable energy to significantly reduce electricity consumption.
- Promote sustainable transportation options and transition City vehicles to renewable energy sources progressively at renewals to reduce carbon emissions.
- Highlight water efficiency considerations for optimised irrigation and use of scheme water across the city.
- Foster the reduction, reuse, and recycling of materials to minimise waste across the City's operations.
- Champion the transition to a Circular Economy model, encouraging the community to prioritise resource efficiency, waste reduction, and sustainable practices.
- Prioritise materials that are long-lasting and deliver high-quality durable outcomes that minimise the need for future reworking from City infrastructure and operations.
- Reduction, reuse and recovery of construction materials from City operations to reduce landfill impact.
- Increasing the amount of alternative water sources for irrigation.

Where we are

- Energy efficiency upgrades are being undertaken across properties and assets portfolio, including HVAC, LED and smart lighting systems.
- On-site renewable energy generation including battery storage is being considered across multiple assets with a current capacity at 156kW.
- Transitioning to zero emissions vehicles including seven electric light fleet, two all-terrain vehicles and three electric path sweepers.
- Smart irrigation program and groundwater monitoring across 26 parks, gardens and reserves.
- The City maintains its Gold status under Water Corporation's Waterwise Program.
- City achieved Platinum status under Water Corporation's Waterwise Program.
- Effective community waste education programs across the city.

Informing Documents

- Open Space Plan 2023-2038
- Integrated Water Plan 2023-2028
- Public Lighting Framework 2019-2029
- Asset Management Plans
- Waste Strategy 2014 – 2024+



156 kW

on-site renewable energy capacity (FY2023/24)



22%

diverted from landfill (FY2023/24)



6,585,779 kL

community scheme water use (FY2023/24)

A Well-Planned City

Theme Objective:

To plan for land use and urban infrastructure that supports sustainability for intergenerational equity.

A well-planned city integrates sustainability into all aspects of its development. This means prioritising climate adaptation and mitigation in urban design, ensuring that new developments are resilient to climate risks such as flooding and heatwaves, and promoting compact, walkable communities with access to sustainable transport options. The City of Perth’s urban planning efforts focus on reducing reliance on private cars, enhancing alternative modes of transport, and increasing the accessibility of green spaces and essential services. Sustainable buildings, energy-efficient infrastructure, and climate-resilient public spaces are central to the city’s vision of growth supporting economic development that doesn’t come at the expense of the environment or community wellbeing. The City supports a holistic approach to planning, prioritising sustainability, by integrating climate resilience and a strong connection between urban spaces, people and nature across the City’s neighbourhoods.

OUTCOMES	MEASURE OF SUCCESS		
	Short Term (2026)	Medium Term (2029)	Long Term (2032)
4.1 Residential population across the city increased	Progressive increase towards residential target of 55,000 by 2036		
4.2 Open space provision across the City’s neighbourhoods increased	Continual reduction in gaps in open space provision across the city’s neighbourhoods		
4.3 Sustainability certifications increased	Green Star NABERS	Progressive increase in building sustainability certifications across the city	
4.4 Public transport ridership increased	Establish the baseline for public transport ridership within the city	Increase in the percentage of public transport ridership within the city relative to the baseline	
4.5 Percentage of people not using a car as primary mode of transport to work increased	Establish the baseline for people not using the car as a primary mode of transport	Increase in percentage of residents using public transport to travel to work Increase in percentage of residents using active transport to travel to work	



Tactical Guidelines

- Promote mixed-use developments to reduce urban sprawl, support public transport, and preserve open space.
- Design and retrofit buildings and infrastructure in the city to be more resilient to climate impacts (e.g., heatwaves, flooding, and storms).
- Create integrated, sustainable transport systems that reduce car dependency, including bike lanes, pedestrian zones and efficient public transport networks.
- Create a network of accessible spaces that meet current and future community needs, protect environmental quality and enhance natural ecosystems.
- Promote active travel plan requirements for all residential and mixed-use developments

Informing Documents

- Local Planning Strategy 2023
- Local Planning Scheme No. 3 (under development)
- Local Planning Policies (under development)
- Urban Design Framework
- Urban Forest Plan 2016–2036
- Urban Greening Strategy 2023–2036
- Open Space Plan 2023–2038
- Integrated Water Plan 2023–2028
- Public Lighting Framework 2019–2029
- Asset Management Plans
- Walking in the City Plan 2023–2026
- Bike Plan 2025–2035
- Safe City Plan 2021–2025
- Public Toilet Plan 2022–2032

Where we are

- City Living Campaign including incentives for residential development.
- E-scooter share scheme trial
- Electric vehicle charging infrastructure and trials.



34,624

estimated residential population (2024)



311

acres or 23% of total land area of open space (2023)



75

Green Star certifications

A Thriving and Inclusive City

Theme Objective:

To create a city where everyone has equal access to the benefits of sustainability, ensuring our actions are inclusive, equitable, and improve quality of life for all.

The City strives to be a diverse and inclusive place, where all members of the community have access to the opportunities and services needed to thrive in a climate-conscious society. This includes facilitating the promotion of social cohesion, information access and ensuring that vulnerable communities are not left behind in the transition to a sustainable future. As the City works towards a sustainable future, it shall seek to involve local communities and businesses in actions that benefit everyone and promote greater social equity.

OUTCOMES	MEASURE OF SUCCESS		
	Short Term (2026)	Medium Term (2029)	Long Term (2032)
5.1 Community investment in sustainable upgrades as enabled by the City's grants and sponsorship programs maintained	Investment levels from uptake of Sustainability grants programs maintained and increased		
5.2 Community participation rates on Sustainable Perth Hub increased	Establish the Sustainable Perth Hub	Progressive increase in community participation rates on Sustainable Perth Hub	
5.3 Community engagement on sustainability education initiatives increased	Establish community sustainability education programs / initiatives	Increased community engagement with sustainability education programs / initiatives	
5.4 The City's staff engagement on sustainability education initiatives increased	Establish staff sustainability education program	Increased staff engagement rate on sustainability education initiatives	
5.5 The City's staff engagement on equity, diversity and inclusion increased	Increased staff engagement rate on equity, diversion and inclusion		
5.6 The City's procurement from Aboriginal Business and Disability Enterprises optimally considered	Establish an awareness program for proactive engagement of Aboriginal Business and Disability Enterprises in the City's procurement	Percentage spend by the City procuring from Aboriginal Business and Disability Enterprises is optimally maintained	



Tactical Guidelines

- Offer financial incentives as grants and sponsorships to all parts of the community and businesses, to support sustainable upgrades and practices.
- Access to sustainability resources, education and training opportunities for all parts of the community and businesses, empowering them to learn about sustainability and participate in sustainable practices.
- Raise sustainability awareness across the City’s workforce through awareness programs and reference tools and robust management system.
- Improving organisational engagement on understanding social justice through the City’s Equity, Diversity and Inclusion Framework.
- Encouraging focus on procurement from Aboriginal Businesses and Disability Enterprises suppliers.

Where we are

- Residential grant programs including sustainability assessments and upgrades.
- Community advisory groups – Elders Advisory Group, Neighbourhood Groups, LGBTQIA+, Access and Inclusion.

Informing Documents

- Social, Health and Wellbeing Strategy 2023-2033
- Diversity, Equity and Inclusion Framework 2021
- LGBTQIA+ Plan 2025-2029
- Reconciliation Plan (in development)
- Disability Access and Inclusion Plan 2021-2025
- Events Strategy 2021-2025
- Sponsorship guidelines
- Heritage Strategy 2020-2024
- Workforce Plan 2021/2022 – 2024/2025
- Library Strategy 2023-2027



\$185,623

community investment in sustainable upgrades (FY2022/23)



2,357

hits on Sustainable Perth Hub (2024)



0.6%

of procurement on Aboriginal and disability enterprises (FY2023/24)

A Safe and Healthy City

Theme Objective:

To protect the health and safety of the community through sustainable measures that reduce exposure to risks, improve environment, and promote a healthy, active lifestyle.

The City is committed to ensuring the safety and wellbeing of its community in the face of a changing climate. This includes initiatives to reduce air pollution, improve water quality of waterbodies, and protect community from the effects of extreme weather events such as heatwaves, storms, and flooding.

Efforts to enhance green spaces, promote active transport, and ensure clean energy options contribute to better physical and mental health. Strengthened emergency response systems to ensure preparedness for climate risks, while also providing access to wellness and support services for the most vulnerable groups.

OUTCOMES	MEASURE OF SUCCESS		
	Short Term (2026)	Medium Term (2029)	Long Term (2032)
6.1 Outdoor air quality across the City's neighbourhoods monitored, maintained and publicly accessible	Establish outdoor air quality monitoring system	Engagement and awareness progressively increased on air quality aspects and impacts across the city	
6.2 Indoor air quality in the City's public facilities monitored, maintained and publicly accessible	Establish indoor air quality management system and baseline for the City's public facilities	Indoor air quality in City's public facilities is maintained within permissible limits	
6.3 Health of water bodies across the city maintained	Establish water quality management system	Water quality in the City's water bodies is maintained within permissible limits	
6.4 Percentage of people walking or cycling as their primary mode of transport to work increased	Progressive increase in the percentage of residents that walk or cycle to work		
6.5 Number of emergency response facilities' capacity across the City's neighbourhoods increased	Establish a plan to increase emergency response capacity across the city	Capacity of emergency response facilities progressively increased across the City's neighbourhoods	The number of emergency response facilities progressively increased across the city with appropriate renewable energy back-up systems
6.6 Heat-related health incidents reduced	Number of heat-related health incidents progressively reduced towards zero incidents		



Tactical Guidelines

- Implement initiatives to measure air and water quality for improving community and visitor access, and deliver programs for enhancing spaces with improved air quality and healthy water bodies.
- Strengthen community resilience by protecting vulnerable communities from extreme weather events by increasing the number of emergency management hubs and/or increasing the capacity of existing facilities.
- Strengthen partnerships with lead agencies around communications and support.
- Enhanced focus on adaptation measures across existing facilities and public open spaces to respond to climate risks.
- Promoting active transport modes like walking, cycling infrastructure, and green public spaces to encourage physical activity and reduce reliance on cars.

Where we are

- Five emergency response facilities across three neighbourhoods, with 3,029 persons capacity.
- Safe City Campaign established to raised awareness of safety in the city for residents, workers and visitors.

Informing Documents

- Social Health and Wellbeing Strategy 2023-2033
- Safe City Plan 2021-2025
- Disability Access and Inclusion Plan 2021-2025
- Bike Plan 2025-2035
- Walking in the City Plan 2025-2035
- Workforce Plan



7

heat-related incidents
per 100,000 hospitalisations
(City of Perth local government area)



3,029

persons capacity in emergency
response facilities (2024)



18%

of people in the City walk or
cycle to work

A Prosperous City

Theme Objective:

To support a green economy that creates sustainable local jobs, fosters innovation and transitions to low emission industries.

The City supports an economy that prioritises sustainability, innovation, and climate resilience. This includes supporting green jobs, fostering innovation, energy transition and encouraging sustainable business practices across all sectors. The City acknowledges its position as a gateway for the resources and the energy sectors which are a strong backbone for the growth of the city whilst seeking to future-proof its economy and facilitate long-term opportunities for local businesses and ratepayers ensuring sustainability. The City is dedicated to a future economy that supports local prosperity while ensuring that all residents, ratepayers and small businesses in the city benefit from a sustainable economic transition.

OUTCOMES	MEASURE OF SUCCESS		
	Short Term (2026)	Medium Term (2029)	Long Term (2032)
7.1 Business investment as enabled by the City’s grants and sponsorship programs maintained	Establish the baseline on current levels of business investment (\$) facilitated/ enabled by the City’s grants and sponsorship programs	Levels of business investment (\$) facilitated/ enabled by the City’s grant and sponsorship programs progressively increased	
7.2 Business engagement with the City on sustainability programs increased	Develop Sustainable Perth Hub business webpages and events program	Number of businesses engaging with the Sustainable Perth Hub webpages and events progressively increased each financial year	
7.3 Percentage spend by the City on procurement from suppliers headquartered in WA increased	Establish the baseline on current levels of percentage spend by the City on procurement from suppliers headquartered in WA	Percentage spend by the City on procurement from suppliers headquartered in WA progressively increased	
7.4 Socio-Economic Index for Areas (SEIFA IRSD) score for the City of Perth population is maintained	SEIFA IRSD score to remain above 1000		
7.5 Green energy industry thriving in the city	Establish baseline on current number of businesses in the green energy services and infrastructure industry	Number of businesses in the green energy services and infrastructure industry increasing	
7.6 Collaboration between industries, startups and education providers for growth in sustainable and high skill industries increased	Establish strategic partnerships with leading universities, industries, startup incubators and research organisations in WA	Partnerships progressively increased through educational research programs, startup programs and pilot projects in the city	

8 DECENT WORK AND ECONOMIC GROWTH



9 INDUSTRY, INNOVATION AND INFRASTRUCTURE



12 RESPONSIBLE CONSUMPTION AND PRODUCTION



Tactical Guidelines

- Offer financial incentives as Grants and Sponsorship to businesses for sustainability initiatives.
- Improving access to sustainability resources, education and awareness opportunities for local businesses, and startups, empowering them to learn about sustainability and participate in sustainable practices.
- Focus on strengthening the integration of local supply chains for the City's operations.
- The City demonstrating sustainability leadership amongst local businesses by showcasing examples and pilots.
- Facilitate collaboration across the state, national, international businesses focused on sustainability and leveraging opportunities across transitioning global green economy.

Where we are

- Relationships with eight sister cities, three friendship cities and 18 World Energy City Partnership cities.
- Partnership with Australian Urban Design Research Centre (AUDRC) for climate resilience research in urban environments.
- Partnership in research consortium, WATCH project, focused on circular economy and material mapping in WA.
- Partnership with Kings Park for climate resilient plant species.

Informing Documents

- Economic Development Strategy
- Events Strategy 2021-2025
- Grants and Sponsorship Guidelines



1040

SEIFA IRSD score (2021)

A Well-Governed City

Theme Objective:

To ensure that climate action, sustainability and resilience are embedded into all levels of governance, with a focus on transparent decision-making and performance.

The City is dedicated to providing strong, transparent and accountable governance, with sustainability at the core of its decision-making processes. This includes setting clear climate action goals, integrating sustainability into all City policies, plans, projects and programs and ensuring that community members have a voice in shaping the city's climate future. Collaboration between government, business and community stakeholders is key to ensuring that sustainability is embedded in an inclusive and transparent manner. The City's leadership is committed to making sustainability a central part of all decision-making processes. Through effective governance, the City seeks to foster public trust and ensure long-term environmental, social, and economic sustainability.

OUTCOMES	MEASURE OF SUCCESS		
	Short Term (2026)	Medium Term (2029)	Long Term (2032)
8.1 Percentage of City's strategies and policies with clear linkages to Sustainability Strategy themes increased	Initiate a continual improvement program for establishing linkages	100% of City's strategies and policies establish clear linkages	Levels of embedded sustainability across the City's strategies and policies to be maintained and business as usual
8.2 Percentage of City's processes/ procedures and projects embedded with sustainability considerations increased	Initiate a continual improvement program for establishing linkages	100% of City's processes/ procedures and projects embedded with sustainability considerations	Levels of embedded sustainability across the City's processes/ procedures and projects to be maintained and business as usual
8.3 Annual community spend on successful collaborations with external stakeholders for projects, services and engagements (Grants, Sponsorships, Events) increased	Establish baseline on value from external contributions driven by the City's collaborations	Value from external contributions driven by the City's collaborations progressively increased, as a percentage of the City's contribution	
8.4 Asset Sustainability Ratio improved	Continually improve the ratio between 0.9 and 1.10 levels ensuring considerations of all social, economic and environmental externalities and climate risks within Asset Management Plan		
8.5 Financial Health Indicator score remains higher than 70	Continually improve the score, aspiring to lead WA local governments (at least above 70) ensuring considerations of all social, economic and environmental externalities and climate risks within the estimates of LTFP		
8.6 Council decisions demonstrate consideration of sustainability themes	Establish decision making framework that includes sustainability framework	Strategic prioritisation of sustainability themes in decision making processes	Linkages to sustainability themes in council decisions increased



Tactical Guidelines

- Publish reports on sustainability goals, climate action progress and financial investments in green initiatives.
- Facilitate forums, workshops, and community portals to engage community on Sustainability aspects.
- Foster City’s collaboration with other local governments, businesses, research institutions and non-profit organisations related to the city to ensure coordinated sustainability action across sectors.
- Ensure that all City strategies, plans, policies, programs and activities have embedded sustainability aspects.
- Maintain a robust financial planning, performance monitoring and risk management for long-term sustainability of the organisation.

Where we are

- Piloting management systems to effectively monitor, track, optimise, and report on sustainability outcomes.
- Refreshing of the City’s Sustainability Strategy including systems and processes for implementation and accountability across the organisation.
- Financial Health Indicator 88.

Informing Documents

- Corporate Governance Framework
- Long-term Financial Plan
- Asset Management Plans
- Strategic Community Plan 2022-2032
- Corporate Business Plan



0.834

Asset Sustainability Ratio
(FY2023/24)



88

Financial Health Indicator
(FY2023/24)

Putting Strategy into Action

To effectively implement the City of Perth's Sustainability Strategy, it is crucial that expectations of sustainability performance are embedded across all functions of the city. This will ensure that sustainability is a strategic and operational imperative and becomes a fundamental part of every decision, action and service provided by the City.

Strategic Integration

The strategy will serve as the guiding reference for all City strategies, plans, and decisions. From the outset of any initiative, the balance of social, environmental, and economic factors must be considered. All plans and operational strategies from the City will track progress against the defined Measures of Success for the outcomes relevant to their respective strategy, plan, project, or decision. The outcomes of the Sustainability Strategy will guide decision-making, strategic planning, project prioritisation, and long-term impact assessments, which will be integrated into project scoping, feasibility studies, and budget planning.

Organisational Capacity and Resource Allocation

Effective implementation of the strategy requires sufficient organisational capacity. The City will build sustainability expertise through training and clear responsibilities across all levels of the organisation. Resources will be appropriately allocated to high-impact sustainability projects, ensuring short-term and long-term goals from this strategy are met and financial sustainability further improves over time, mitigating the risks and leveraging the opportunities that sustainability presents.

Operational Planning

All projects and initiatives will integrate sustainability outcomes right from their conceptualisation, as outlined in the strategy, as applicable, and will report progress against the defined measures of success. A short-term Sustainability Priorities Plan for 2025-26 has been developed to lay the foundation for the organisation's sustainability transformation. Based on this, a long-term implementation plan will be created for the next three years. The Sustainability Service unit will provide business partnership and support throughout all stages of operationalising this strategy and its governance.

Embedding Sustainability in Processes and Operations

Sustainability will be integrated into all operational processes as a continual improvement imperative. Each service unit shall have objectives aligned with the strategy, ensuring they are embedded in daily decisions. Performance will be tracked, and improvements guided by data and transparent reporting.

Creating a Sustainability Culture

Sustainability must be ingrained in the City's culture, with every staff member understanding their role in achieving sustainability goals. Training, workshops, and professional development will empower staff to integrate sustainability into their work. Leadership will consistently model and communicate sustainability as a core responsibility.

Ensuring Continuous Improvement

The strategy includes a robust monitoring and reporting framework to track progress and adjust as needed. Regular reviews, supported by a sustainability unit business partner for each area, will ensure the City adapts to emerging trends, stakeholder expectations, and evolving community needs.

Transitioning this Sustainability Strategy within the revisions of the Strategic Community Plan (Council Plan)

As sustainability matures, it's organisational approach will become central to the City's long-term vision in the Council Plan. Over time, sustainability will be fully integrated into the City's governance, guiding all aspects of decision-making.

Monitoring Progress

The outcomes across the themes will be continually monitored and analysed for the whole organisation by the Sustainability Service unit with associated indicators provided to the applicable service units. The performance of each theme will be reported on as a part of the City's annual reporting processes, ensuring that the City can effectively measure, report and adjust actions based on data and performance outcomes. Regular monitoring provides transparency, encourages accountability, and supports continuous improvement toward the City's Sustainability Strategy.

The management of outcomes for each theme will involve:

Data Collection:

Establishing systems to gather relevant data on sustainability aspects and impacts including environmental, social, and economic metrics.

Measures of Success:

Defining specific, measurable, attainable, relevant, and time-bound goals for each theme.

Reporting:

Publishing regular progress reports to ensure transparency and inform stakeholders of achievements, challenges, and next steps.

Review and Adjustment:

Periodic reviews of performance to identify areas for improvement and adjust strategies as necessary to meet sustainability objectives.

SMART GOALS



Specific

Be clear about what you are aiming for — goals should include specifics such as 'who, where, when, why and what'.



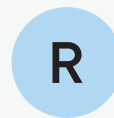
Measurable

Set goals that can be measured. Your goals should include a quantity of 'how much' or 'how many'.



Achievable

Set goals that can be achieved. Goals that are too difficult/unattainable can be discouraging.



Realistic

Set goals that are practical and fit the circumstances.



Time-Related

Set a timeframe and have an endpoint/deadline.



We use systems thinking

Focus on individual behaviour is not enough. It is necessary to focus on the environment people live in and how this interacts with their choices and behaviours.



We are informed by evidence

We are committed to evidence-based and evidence-informed practice in the planning, implementation and evaluation of our work.

Outcome Index Table

Theme	Outcome		Baseline Values	Accountability for Reporting
Theme 1: A Climate-Focused City	1.1 Organisation greenhouse gas emissions reduced	Scope 1 & 2	5,154 tCO ₂ e (FY2023/24)	Planning and Sustainability
		Scope 3	To be established	Planning and Sustainability
	1.2 Organisation physical, transitional and reputational climate risks are identified and understood across assets and operations		To be established	Planning and Sustainability
	1.3 Community greenhouse gas emissions reduced		To be established	Planning and Sustainability
Theme 2: A Green City	2.1 Urban tree canopy across the city is preserved and progressively increased		19% (2016)	Planning and Sustainability
	2.2 Biodiversity across the city is maintained		To be established	Infrastructure and Operations
	2.3 Urban heat island mitigated with a reduction in temperature hot spots across the city		To be established	Planning and Sustainability
	2.4 Amount of green cover and green infrastructure in City assets increased		To be established	Planning and Sustainability
Theme 3: A Resource-Conscious City	3.1 Organisation electricity consumption from the grid reduced		11,030,500 kWh (FY2023/24)	Planning and Sustainability
	3.2 Organisation fossil fuel consumption reduced	Transport	To be established	Infrastructure and Operations
		Buildings and Other	To be established	Commercial Services
	3.3 On-site renewable energy generation increased	Organisation	156 kW (FY2023/24)	Planning and Sustainability
		Community	To be established	Planning and Sustainability
	3.4 Scheme water consumption reduced	Organisation	76, 846 kL (FY2023/24)	Planning and Sustainability
		Community	6,585,779 kL (FY2023/24)	Planning and Sustainability
	3.5 Organisation ground water consumption aligned with annual irrigation demand		821, 551 kL	Infrastructure and Operations
	3.6 Percentage of waste diverted from landfill increased		22% (FY2023/24)	Infrastructure and Operations
	3.7 Waste recovery enhanced	Municipal solid waste	To be established	Infrastructure and Operations
Commercial and demolition waste		To be established	Infrastructure and Operations	
Theme 4: A Well-Planned City	4.1 Residential population across the city increased		34,624 (2024)	Planning and Sustainability
	4.2 Open space provision across the City's neighbourhoods increased		23% (2023)	Planning and Sustainability
	4.3 Sustainability certifications increased	Green Star	75	Planning and Sustainability
		NABERS	To be established	Planning and Sustainability
	4.4 Public transport ridership increased		To be established	Planning and Sustainability
4.5 Percentage of people not using a car as primary mode of transport to work increased		To be established	Planning and Sustainability	

Theme	Outcome	Baseline Values	Accountability for Reporting
Theme 5: A Thriving and Inclusive City	5.1 Community investment in sustainable upgrades as enabled by the City's grants and sponsorship programs maintained	\$185,623 (FY2022/23)	Engagement and Activation
	5.2 Community participation rates on Sustainable Perth Hub increased	2,357 (FY2023/24)	Planning and Sustainability
	5.3 Community engagement on sustainability education initiatives increased	To be established	Planning and Sustainability
	5.4 The City's staff engagement on sustainability education initiatives increased	To be established	Corporate Services
	5.5 The City's staff engagement on equity, diversity and inclusion increased	To be established	Corporate Services
	5.6 The City's procurement from Aboriginal Business and Disability Enterprises optimally considered	0.6% (FY2023/24)	Corporate Services
Theme 6: A Safe and Healthy City	6.1 Outdoor air quality across the City's neighbourhoods is monitored, maintained and publicly accessible	To be established	Planning and Sustainability
	6.2 Indoor air quality in the City's public facilities is monitored, maintained and publicly accessible	To be established	Planning and Sustainability
	6.3 Health of water bodies across the city is maintained	To be established	Infrastructure and Operations
	6.4 Percentage of people walking or cycling as their primary mode of transport to work increased	18%	Planning and Sustainability
	6.5 Number of emergency response facilities' capacity across the City's neighbourhoods increased	3,029 persons capacity (2024)	Planning and Sustainability
	6.6 Heat-related health incidents reduced	7 incidents per 100,000	Planning and Sustainability
Theme :7 A Prosperous City	7.1 Business investment as enabled by the City's grants and sponsorship programs maintained	To be established	Engagement and Activation
	7.2 Business engagement with the City on Sustainability programs increased	To be established	Planning and Sustainability
	7.3 Percentage spend by the City on procurement from suppliers headquartered in WA increased	To be established	Corporate Services
	7.4 Socio-Economic Index (SEIFA IRSD) score maintained	1,040 (2021)	Planning and Sustainability
	7.5 Green energy industry thriving in the City	To be established	Engagement and Activation
	7.6 Collaboration between industries and education providers for growth in sustainable and high skill industries increased	To be established	Engagement and Activation
Theme 8: A Well-Governed City	8.1 Percentage of City's strategies and policies with clear linkages to Sustainability Strategy themes	To be established	Planning and Sustainability
	8.2 Percentage of City's processes/procedures and projects embedded with sustainability considerations	To be established	Planning and Sustainability
	8.3 Annual community spend on successful collaborations with external stakeholders for projects, services engagements (Grants, Sponsorships, Events)	To be established	Engagement and Activation
	8.4 Asset Sustainability Ratio improved	0.834 (FY2023/24)	Corporate Services
	8.5 Financial Health Indicator score remains higher than 70	88 (FY2023/24)	Corporate Services
	8.6 Council decisions demonstrate consideration of sustainability hemes	To be established	Planning and Sustainability

Sustainability Framework

The sustainability framework shows how the SDGs support the City and what it does. All the services the City provides, is supported by the built environment which is supported by the resources and ecosystem services provided by the natural environment.

A Well-Governed City

- Governance and Prosperity



A Prosperous City

- Governance and Prosperity



A Safe and Healthy City

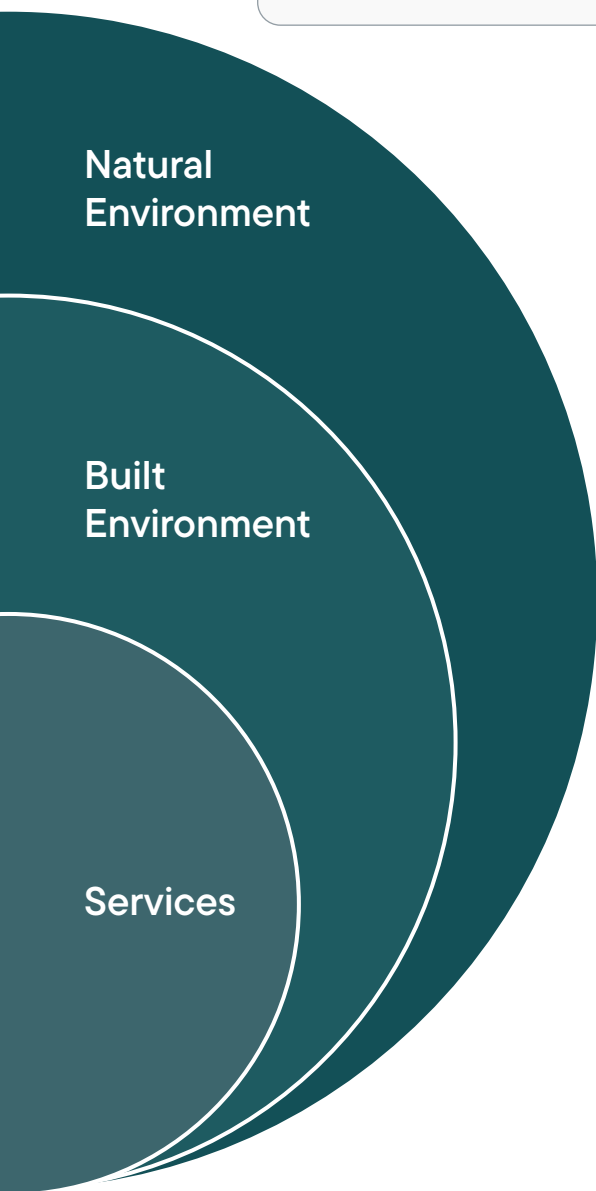
- People Movement
- People and Wellbeing



A Thriving and Inclusive City

- Thriving and Vibrant





A Climate-Focused City

- Climate Change



A Green City

- Environmental Stewardship



A Resource-Conscious City

- Environmental Stewardship
- Resource Efficiency



A Well-Planned City

- Urban Planning
- People Movement



Glossary

Term	Definition
Active transport	Modes such as walking and cycling and associated infrastructure that encourages physical activity and reduces reliance on cars.
Biodiversity (biological diversity)	All life forms on earth, including plants, animals, fungi and micro-organisms and the ecosystems they live in.
Biodiversity conservation and restoration	The protection and restoration of local ecosystems and natural habitats, enhancing urban biodiversity.
Carbon neutral	The balance of greenhouse gas emissions by offsetting with equivalent carbon offsets.
Carbon offsets	Tradable units that represent the avoidance, reduction, or removal of one tonne of greenhouse gas emissions.
Circular economy	A system focused on the reduction, reuse, and recycling of materials to minimise waste and conserve natural resources.
Climate adaptation	Measures to ensure communities, infrastructure and ecosystems can withstand and adapt to climate risks, enhancing resilience to climate change impacts.
Climate change	Long-term shifts in global or regional climate patterns, primarily driven by human activities that increase greenhouse gas emissions, leading to rising temperatures and extreme weather events.
Climate education	Educational initiatives to increase climate change literacy and empower communities to participate in sustainable practices.
Climate mitigation	Measures aimed at reducing the impacts of climate change by lowering greenhouse gas emissions.
Climate resilience	The ability of communities and ecosystems to prepare for, recover from, and thrive despite climate-induced changes and extreme events such as heatwaves, flooding and storms.
Climate resilient infrastructure	Designing and retrofitting buildings and infrastructure to withstand climate risks, such as heatwaves, flooding, and storms.
Community engagement	Engaging residents through workshops, advisory boards, and forums to involve them in shaping climate actions and policies.
Energy efficiency	The practice of using less energy to achieve the same output, reducing environmental impacts and emissions.
Energy transition	The process of shifting to low-emission, secure alternatives for energy across City-owned buildings, assets, and infrastructure.
Fossil fuel	Fuels that are non-renewable energy sources like coal, oil, and gas.
Greenhouse gas emissions (GHG)	The release of greenhouse gases into the atmosphere, such as carbon dioxide and methane that contribute to global warming and climate change.
Green cover	Combined areas of tree canopy cover and other vegetation on the ground or building roofs when viewed from above in an urban environment (Standards Australia: SA HB 214:2023).

Term	Definition
Green infrastructure (GI)	All vegetation and natural systems that provide environmental, economic, and social benefits such as clean air, water, climate regulation, and places for recreation.
Local supply chains	The procurement of goods and services from local suppliers and business, including those based in Western Australia and Aboriginal businesses, that support local and regional economies and sustainability.
Low emission transport	Sustainable transport options such as cycling, walking, electric vehicles, and public transport that contribute to emissions reduction.
Net zero emissions	The balance of greenhouse gas emissions being reduced to zero through, efficiency, resources usage reductions, renewables, and then minimal carbon offset purchases.
Renewable energy	Energy derived from naturally replenishing sources like sunlight, wind, and geothermal energy.
Scope 1, 2, and 3 emissions	Scope 1: Direct emissions from City owned or controlled sources; Scope 2: Indirect emissions from the consumption of purchased energy; Scope 3: Indirect emissions from the supply chain and other external sources.
Sustainable Development Goals (SDGs)	A set of global goals aimed at addressing challenges such as poverty, inequality, climate change, and environmental degradation.
Sustainable transport networks	Integrated transport systems that reduce reliance on private vehicles, including bike lanes and pedestrian zones.
Sustainability Strategy	A framework for addressing environmental, economic, and social challenges in a holistic way to ensure long-term wellbeing for people and the planet.
Transparent reporting	Regularly publishing reports on sustainability goals, progress, and financial investments in green initiatives to ensure accountability.
Tree canopy cover	The extent of tree cover in an urban area, measured as part of efforts to increase urban greening and mitigate climate risks.
Urban greening	The integration of natural spaces into urban areas to improve air quality, biodiversity, and resilience to climate impacts.
Urban heat island	An urban area experiencing significantly higher temperatures than surrounding rural areas due to human activities and urbanisation.
Urban heat island mitigation	Implementing strategies, such as increased vegetation, providing irrigation and planting trees to provide shade and urban cooling to reduce the effect of higher temperatures in urban areas.
Water efficiency	The practice of using less water to achieve the same output, helping conserve water resources.
Water Sensitive Urban Design (WSUD)	A contemporary approach to the planning and design of urban environments that is sensitive to the issues of water sustainability, resilience and environmental protection (Standards Australia: SA HB 214:2023).



Download this strategy

This publication can be requested in alternative formats: audio, braille, Word or accessible PDF.

Information within this publication is correct at time of printing, July 2025.



GPO Box C120,
Perth WA 6839



27 St Georges Terrace
Perth WA 6000



perth.wa.gov.au

T 08 9461 3333

E info@cityofperth.wa.gov.au

