

MINUTES

WORKS AND URBAN DEVELOPMENT COMMITTEE

16 AUGUST 2016

APPROVED FOR RELEASE

A handwritten signature in black ink, appearing to read 'Martin Mileham', is written over a light grey rectangular background.

**MARTIN MILEHAM
CHIEF EXECUTIVE OFFICER**



CITY of PERTH


MINUTES

WORKS AND URBAN DEVELOPMENT COMMITTEE

16 AUGUST 2016

THESE MINUTES ARE HEREBY CERTIFIED AS
CONFIRMED

PRESIDING MEMBER'S
SIGNATURE


DATE: 6/9/2016.

WORKS AND URBAN DEVELOPMENT COMMITTEE

INDEX

Item	Description	Page
WKS88/16	DECLARATION OF OPENING	1
WKS89/16	APOLOGIES AND MEMBERS ON LEAVE OF ABSENCE	1
WKS90/16	CONFIRMATION OF MINUTES	2
WKS91/16	CORRESPONDENCE	2
WKS92/16	DISCLOSURE OF MEMBERS' INTERESTS	2
WKS93/16	MOUNTS BAY ROAD – PETITION FOR CROSS WALK OUTSIDE THE MOUNT HOSPITAL	2
WKS94/16	MOTIONS OF WHICH PREVIOUS NOTICE HAS BEEN GIVEN	6
WKS95/16	GENERAL BUSINESS	6
WKS96/16	ITEMS FOR CONSIDERATION AT A FUTURE MEETING	7
WKS97/16	CLOSE OF MEETING	7

Minutes of the meeting of the City of Perth **Works and Urban Development Committee** held in Committee Room 1, Ninth Floor, Council House, 27 St Georges Terrace, Perth on **Tuesday, 16 August 2016**.

MEMBERS IN ATTENDANCE

Cr Limnios - Presiding Member
The Lord Mayor
Cr McEvoy

OFFICERS

Mr Mileham - Chief Executive Officer
Ms Barrenger - Acting Director Planning and Development
Mr Watts - Manager Transport
Ms Mannolini - Acting Manager Coordination and Design
Mr Ridgwell - Manager Governance
Ms Rutigliano - Acting Governance Officer

GUESTS AND DEPUTATIONS

Nil

WKS88/16 DECLARATION OF OPENING

5.29pm The Presiding Member declared the meeting open.

WKS89/16 APOLOGIES AND MEMBERS ON LEAVE OF ABSENCE

Nil

WKS90/16 CONFIRMATION OF MINUTES

Moved by The Lord Mayor, seconded by Cr McEvoy

That the minutes of the meeting of the Works and Urban Development Committee held on 26 July 2016 be confirmed as a true and correct record.

The motion was put and carried

The votes were recorded as follows:

For: The Lord Mayor, Crs Limnios and McEvoy

Against: Nil

WKS91/16 CORRESPONDENCE

Nil

WKS92/16 DISCLOSURE OF MEMBERS' INTERESTS

Nil

**WKS93/16 MOUNTS BAY ROAD – PETITION FOR CROSS WALK
OUTSIDE THE MOUNT HOSPITAL**

BACKGROUND:

FILE REFERENCE:	P1013781-2
REPORTING UNIT:	Transport
RESPONSIBLE DIRECTORATE:	Planning and Development
DATE:	5 August 2016
MAP / SCHEDULE:	Schedule 1 – Plan of Area Schedule 2 – View Looking South Schedule 3 – View Looking North Schedule 4 – Previous Route of Blue CAT and Potential Route for Bus No. 35

At its meeting of **7 June 2016**, Council received a petition from Ms C. Warrener on behalf of pedestrians experiencing accessibility difficulties to the Mount Hospital. The petition, containing 161 signatures, aims to seek assistance in obtaining a cross walk on Mounts Bay Road from the bus stop to the hospital.

The area is contained within the Mounts Bay Road Masterplan; the plan was approved by Council at its meeting of **17 September 2013**. A section of the Masterplan between William Street and Mill Street was implemented in 2014. The remainder is subject to a decision being made by the Public Transport Authority (PTA) in respect of the Mounts Bay Road Bus Lane Project.

In 2009, a pedestrian crossing was designed as part of the Mounts Bay Road Bus Priority Project following a report for the Department of Planning and Infrastructure by the consultants Aecom. This report was presented to Council on **25 August 2009**. It was estimated that a traffic signal controlled pedestrian crossing, was likely to cost in the order of \$500,000. The City currently has no budget provision for this.

LEGISLATION / STRATEGIC PLAN / POLICY:

**Integrated Planning
and Reporting
Framework
Implications**

Strategic Community Plan

Council Four Year Priorities: Getting Around Perth
S4 Enhance accessibility in and around the City
including parking.

DETAILS:

On **17 September 2013**, Council received a report detailing the outcomes of a public consultation exercise into the draft Mounts Bay Road Masterplan. The report identified:

- The main issue of concern from residents and businesses was the future of the Blue CAT bus with many people querying if the service would be discontinued along Mounts Bay Road;
- That further consideration would be needed during detailed design to bus stops and pedestrian crossing facilities which meet the service needs of the hospital, business and residents along Mounts Bay Road;
- The City of Perth needed to continue liaison with PTA regarding bus requirements along Mounts Bay Road, in particular the concerns raised by stakeholders regarding the future of the Blue CAT bus service; and
- Further plans and cost options for the physical works will be presented to the Works and Urban Development Committee and Council in the future for further consideration.

On 27 January 2014, the PTA curtailed the Blue CAT bus service at the Esplanade Busport (now Elizabeth Quay Busport) and the new 950 bus service commenced to service the University of Western Australia and Queen Elizabeth II Medical Centre

from the busport via Mounts Bay Road. The previous Blue CAT route is shown on Schedule 4.

Users of the Mount Hospital who previously used the Blue CAT to arrive at the hospital near the entrance could no longer do so and have had to use other services, including Route 950, to arrive at a bus stop opposite the hospital and cross Mounts Bay Road. The majority of users of this stop are likely to be those wishing to cross to access the hospital.

The crossing distance for pedestrians amounts to about 35 metres, comprising 12 metres of road, followed by 9 metres of sloping median strip, followed by a further 14 metres of road. The speed limit of Mounts Bay Road in the locality is 60kph.

In 2013, the 85 percentile traffic speeds were 61.2kph northbound; and 64.4kph southbound.

A Main Roads Western Australia (MRWA) traffic count undertaken in November 2014 identifies an average weekday traffic flow of 20,503 vehicles northbound and 10,130 vehicles southbound at this point on Mounts Bay Road. Peak hourly flows were 2,017 vehicles northbound in the morning peak and 867 vehicles southbound in the evening peak hours.

An analysis of the crashes in the vicinity of the Mount Hospital reveals that for the 5 year period 2011 to 2015, there were 20 crashes. One of these involved personal injury; the remainder being damage only. None of the 20 crashes involved pedestrians.

Since the curtailment of the Blue CAT service, several complaints have been received regarding public transport accessibility to the Mount Hospital; the most recent being the 161 signature petition.

City of Perth Officers have been in discussion with the Department of Transport (DoT) and PTA regarding the provision of a service for the Mount Hospital. This was to be included in State Government's Central Area Transport Plan (CATP) and PTA had identified that Route 35, which currently runs between The Old Mill, South Perth and Elizabeth Quay Busport, could be extended to service the Mount Hospital. This service currently runs from 6.05am through to 6.43pm on a weekday with a frequency of every 30 minutes off peak and every 15 minutes during the peak period. The CATP is not currently adopted by State Government and funding has not been allocated for such projects as the Route 35 extension.

FINANCIAL IMPLICATIONS:

There are no financial implications associated with this report.

COMMENTS:

City of Perth Officers understand that PTA no longer wish to pursue the Mounts Bay Road Bus Lanes project, and have considered bus priority measures using the link road between William Street and the Point Lewis Rotary. However, PTA has not formally written to the City of Perth with their intentions.

The City of Perth is concerned about the delay in extending a Transperth bus route to the Mount Hospital and considers that this provides a major contribution to reducing the pedestrian crossing demand at the Mount Hospital. However, PTA notified the City of Perth on 2 August 2016 that it is “not actively planning anything in regard to services to the Mount Hospital.” It also indicated that “while the Route 950 operates along Mounts Bay Road past the hospital, it is difficult to justify extending another bus route to the hospital, acknowledging for some people with limited mobility, at some times of the day, it is difficult to cross the road to access the hospital in one direction. Were another service to be extended, we would consider the Route 60 in lieu of Route 35.”

The provision of a pedestrian crossing is an expensive solution which would require the approval of MRWA, noting that in the two years since the Blue CAT was diverted, no crashes involving pedestrians have occurred. The locality does not feature in the City of Perth’s Black Spot priority list. A provision for a pedestrian crossing facility of any form has not been recently explored with MRWA, however the provision has been considered viewing the recommendations of the State Government publication “Planning and Designing for Pedestrians: Guidelines”, March 2012; particularly Section 9, Pedestrian Crossing Facilities. This indicates that traffic signal controlled crossings are preferred at locations where there are high pedestrian volumes and high traffic volumes. The alternative Zebra crossings are not preferred on multi-lane roads such as Mounts Bay Road.

A pedestrian crossing would need to be separated into two crossings (and therefore two sets of traffic signals); one for the northbound lanes, and one for the southbound lanes; with a waiting area in the median. The steep gradient in the median would require ramps to achieve disability access compliance. Should an instruction to proceed with a crossing be given, it is considered that the earliest commissioning date would be towards the end of the 2016/17 financial year, subject to Main Roads approval and funding. The City of Perth would need to request funding through the Perth Parking Levy Fund, however this would not guarantee State funding becoming available.

Moved by The Lord Mayor, seconded by Cr McEvoy

That Council:

- 1. notes the petition on behalf of pedestrians experiencing accessibility difficulties to the Mount Hospital;***

(Cont’d)

- 2. notes a signalised pedestrian crossing at the site was investigated in 2009 with early cost estimates in the order of \$500,000;**
- 3. notes that pedestrian crossing movements are likely to have increased following the removal of the Mount Hospital stop from the Blue CAT bus route;**
- 4. considers that the Public Transport Authority rerouting a service from the Elizabeth Quay Busport provides the best solution for accessibility for the Mount Hospital;**
- 5. requests the Chief Executive Officer to write to the Director General Transport requesting that the Public Transport Authority reconsider its position not to reroute a bus service to provide the necessary accessibility.**

The motion was put and carried

The votes were recorded as follows:

For: The Lord Mayor, Crs Limnios and McEvoy

Against: Nil

**WKS94/16 MOTIONS OF WHICH PREVIOUS NOTICE HAS BEEN
GIVEN**

Nil

WKS95/16 GENERAL BUSINESS

Responses to General Business from a Previous Meeting

Nil

New General Business

1. 3D City of Perth Fly-through 2016

The Chief Executive Officer presented a 3D fly-through of the City of Perth as presented at the University of Western Australia (UWA) Open Day on Sunday, 14 August 2016 (TRIM 142370/16).

2. Projects completed in 2015/16

The Acting Manager Coordination and Design presented the projects completed by the Coordination and Design Unit in 2015/16 and future projects for 2016/17. Schedule 5 (TRIM 142504).

WKS96/16 ITEMS FOR CONSIDERATION AT A FUTURE MEETING

Outstanding Items:

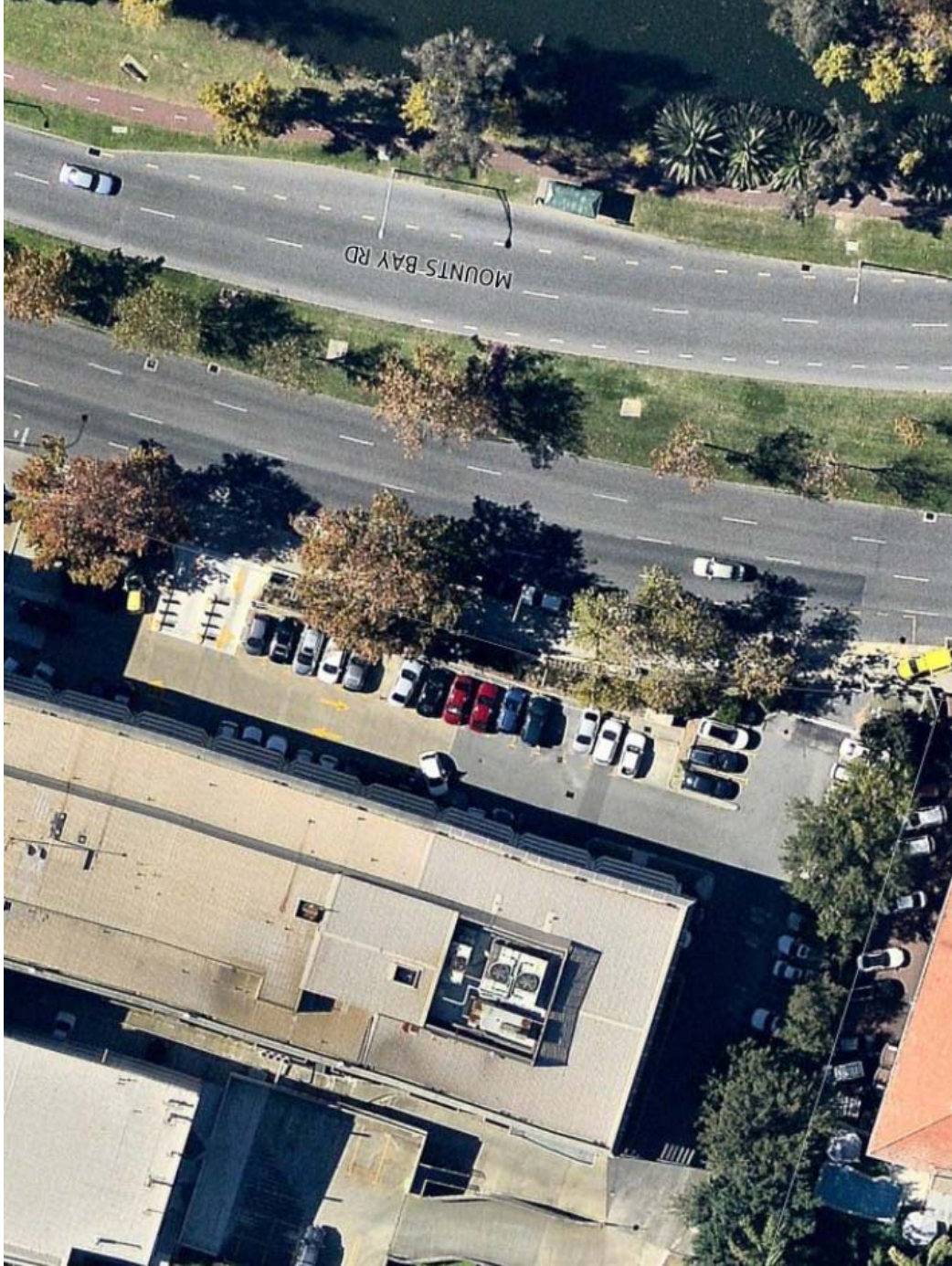
- “PTA Proposed construction of Fitzgerald Street Bus Lanes (City of Perth Section)” (Deferred 12/04/16, Updated 24/05/16, Updated 26/07/16).

WKS97/16 CLOSE OF MEETING

5.47pm There being no further business the Presiding Member declared the meeting closed.

SCHEDULES
FOR THE MINUTES OF THE
WORKS & URBAN
DEVELOPMENT
COMMITTEE MEETING
HELD ON
16 AUGUST 2016

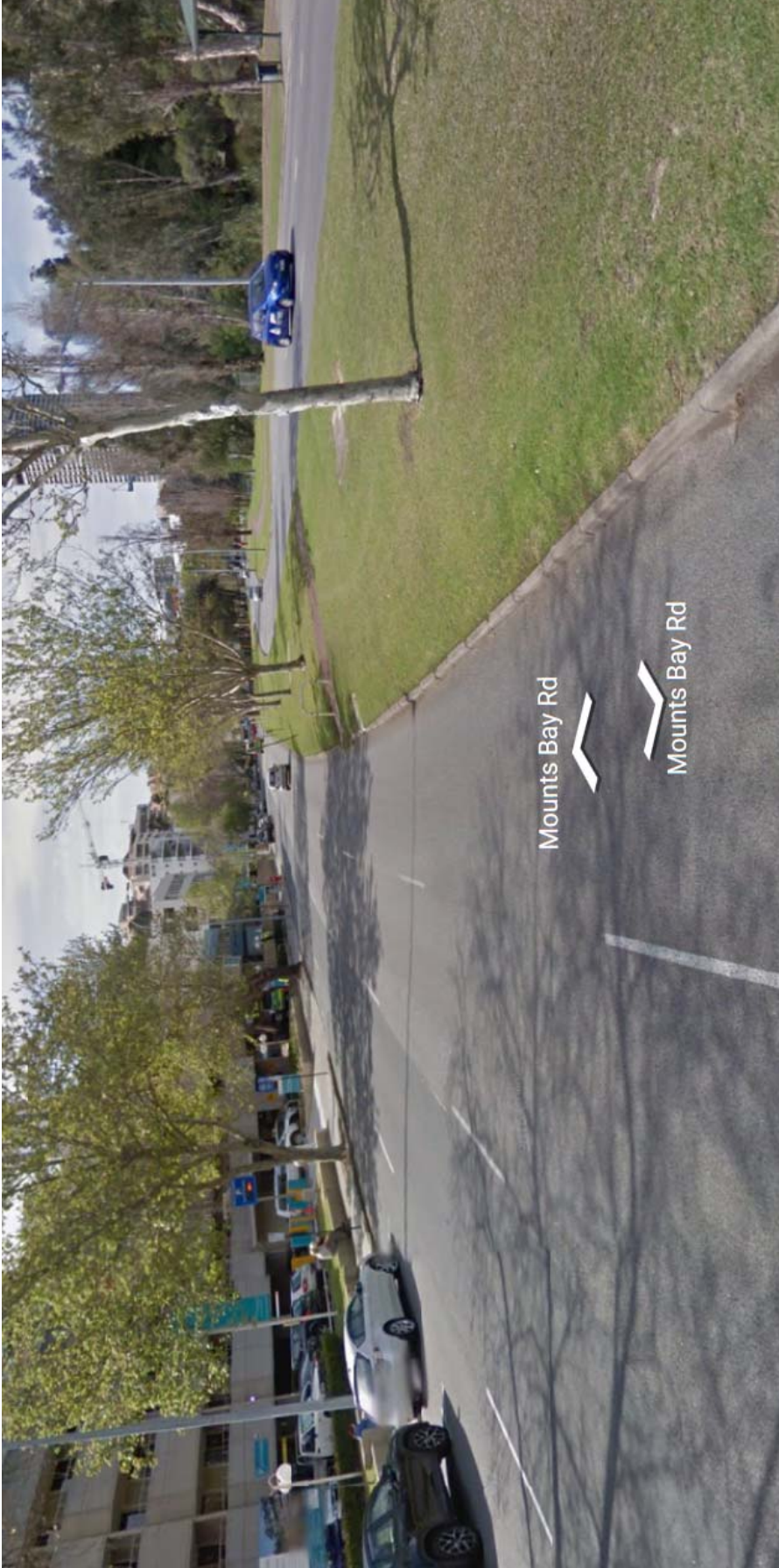
SCHEDULE 1



Schedule 1 – Plan showing location of Mount Hospital and bus stop



Schedule 2 – View of Mounts Bay Road looking south



Schedule 3 – View of Mounts Bay Road looking north



Mount Hospital Petition - Previous Route of Blue CAT and potential route for No. 35 Bus

12/07/2016

1:7500



The City of Perth does not warrant the accuracy or completeness of information in this publication and any person using or relying upon such information does so on the basis that The City of Perth bears no responsibility or liability whatsoever for any errors, faults, defects or omissions of information contained in this document.

CO-ORDINATION AND DESIGN 2015 - 2016 PROJECTS



WATERBANK



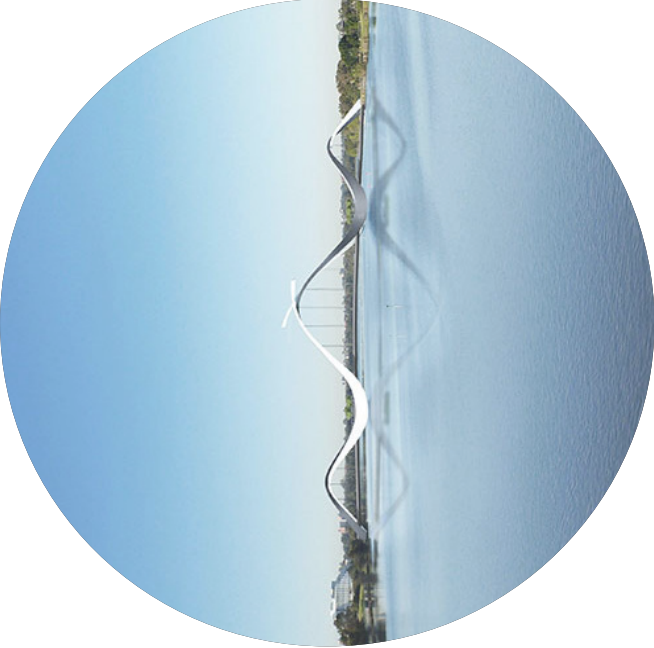
SMARTER PLANNING PERTH



OPENING OF ELIZABETH QUAY



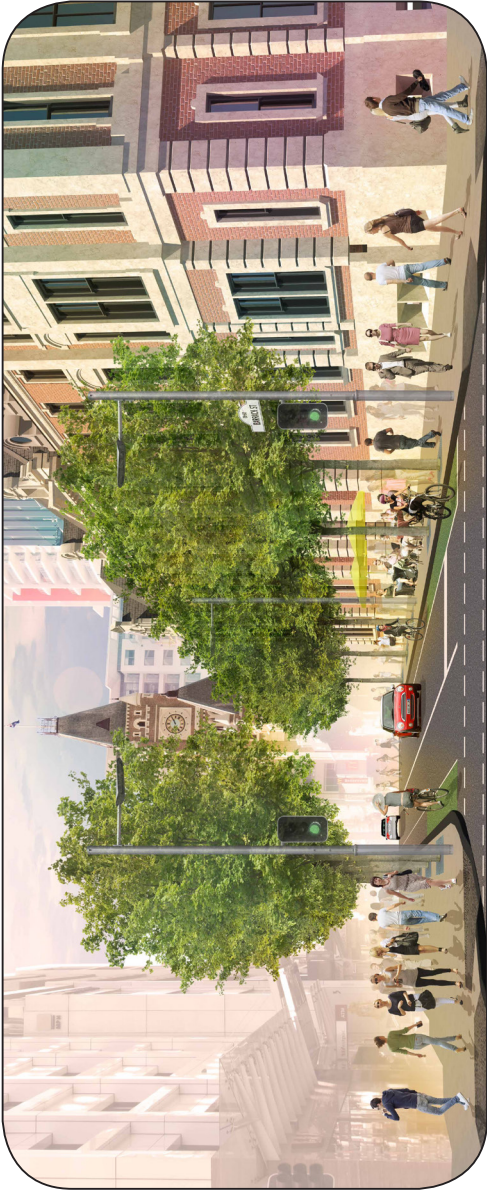
PERTH CITY LINK



SWAN RIVER PEDESTRIAN BRIDGE

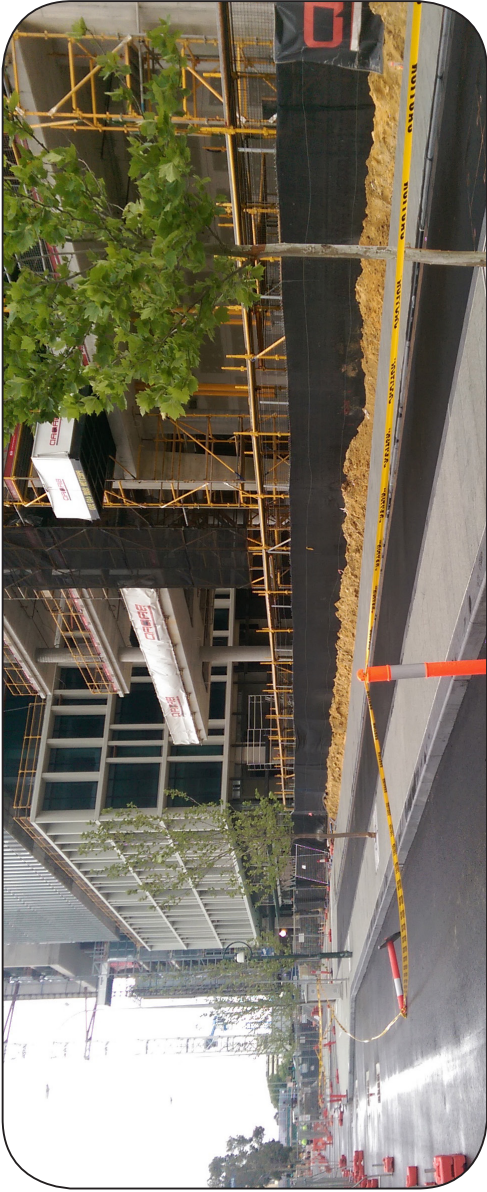
HIGHLIGHTS

- Opening of Elizabeth Quay on 27 January 2016
- Site Specific Agreement for EQ nearing finalisation
- Wellington Gardens and Kings Sq Mall open in Perth City Link
- Construction commenced on the Swan River Pedestrian Bridge
- Stakeholder design workshop held for Waterbank
- Smarter Planning Perth



BARRACK STREET ENHANCEMENT

NOVEMBER 2015

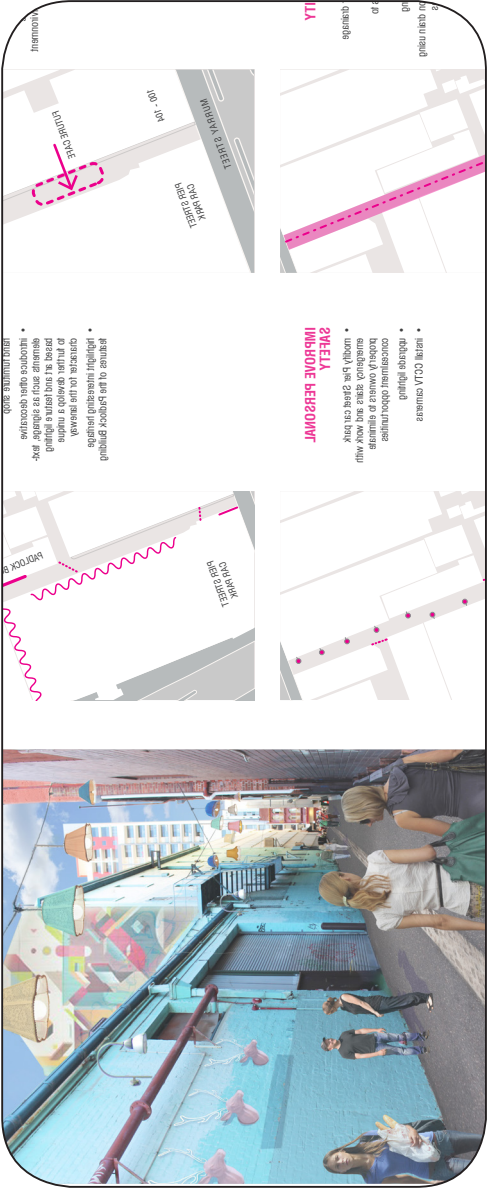


WELLINGTON STREET



MCLEAN LANE - CONCEPT DESIGN

MARCH 2016



MCLEAN LANE - CONCEPT DESIGN

MAY 2016

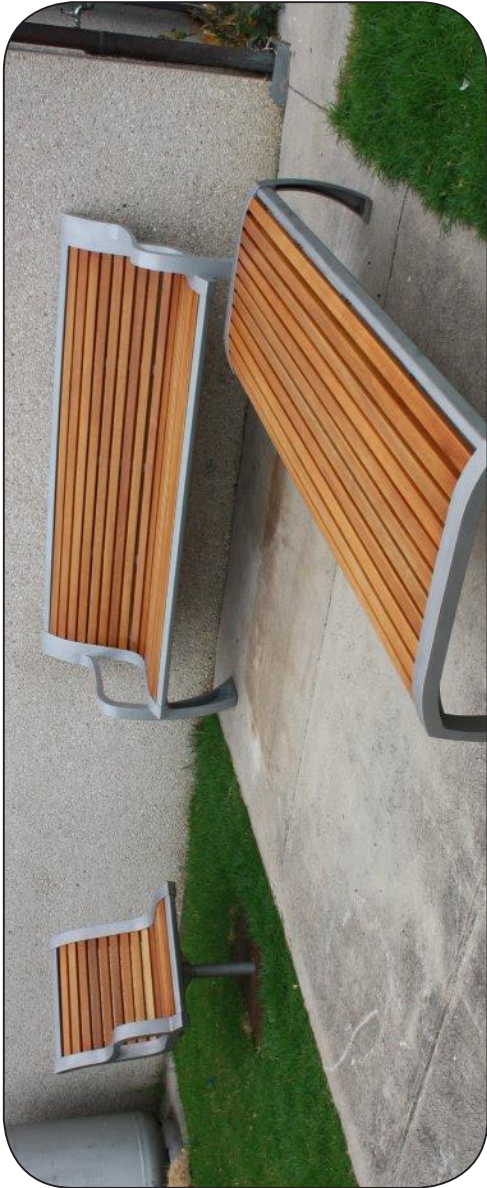


MUSEUM STREET ENHANCEMENT



MUSEUM STREET ENHANCEMENT

COMPLETED PROJECTS



NEW STREET FURNITURE SUITE

JUNE 2016

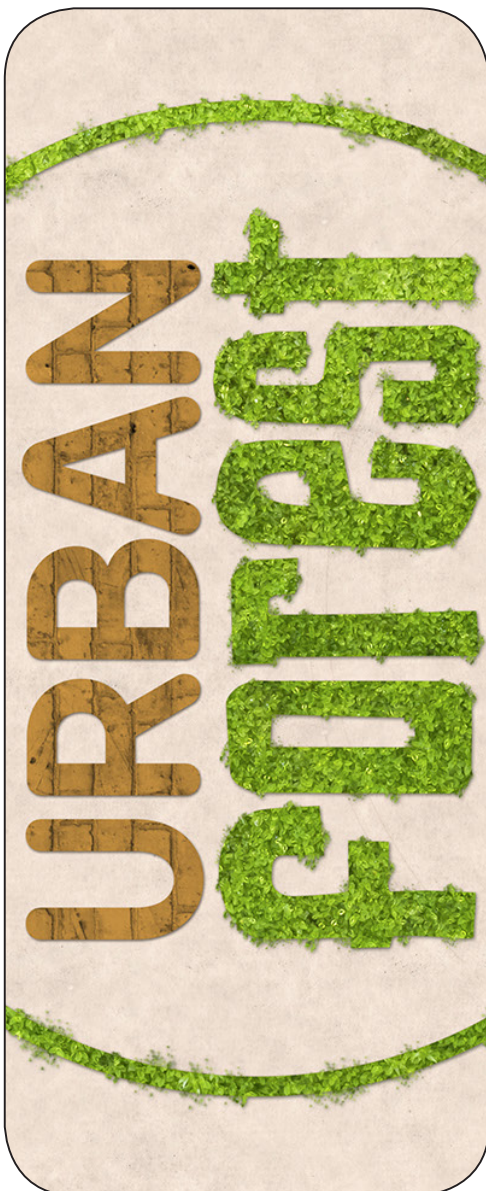


NORTHBRIDGE PIAZZA - VERTICAL GARDEN



SUPREME COURT GARDENS ENHANCEMENT

JULY 2016



DRAFT URBAN FOREST PLAN



THOMAS STREET AND MOUNTS BAY ROAD MEDIAN LANDSCAPING

AUGUST 2016



THOMAS STREET MEDIAN LANDSCAPING

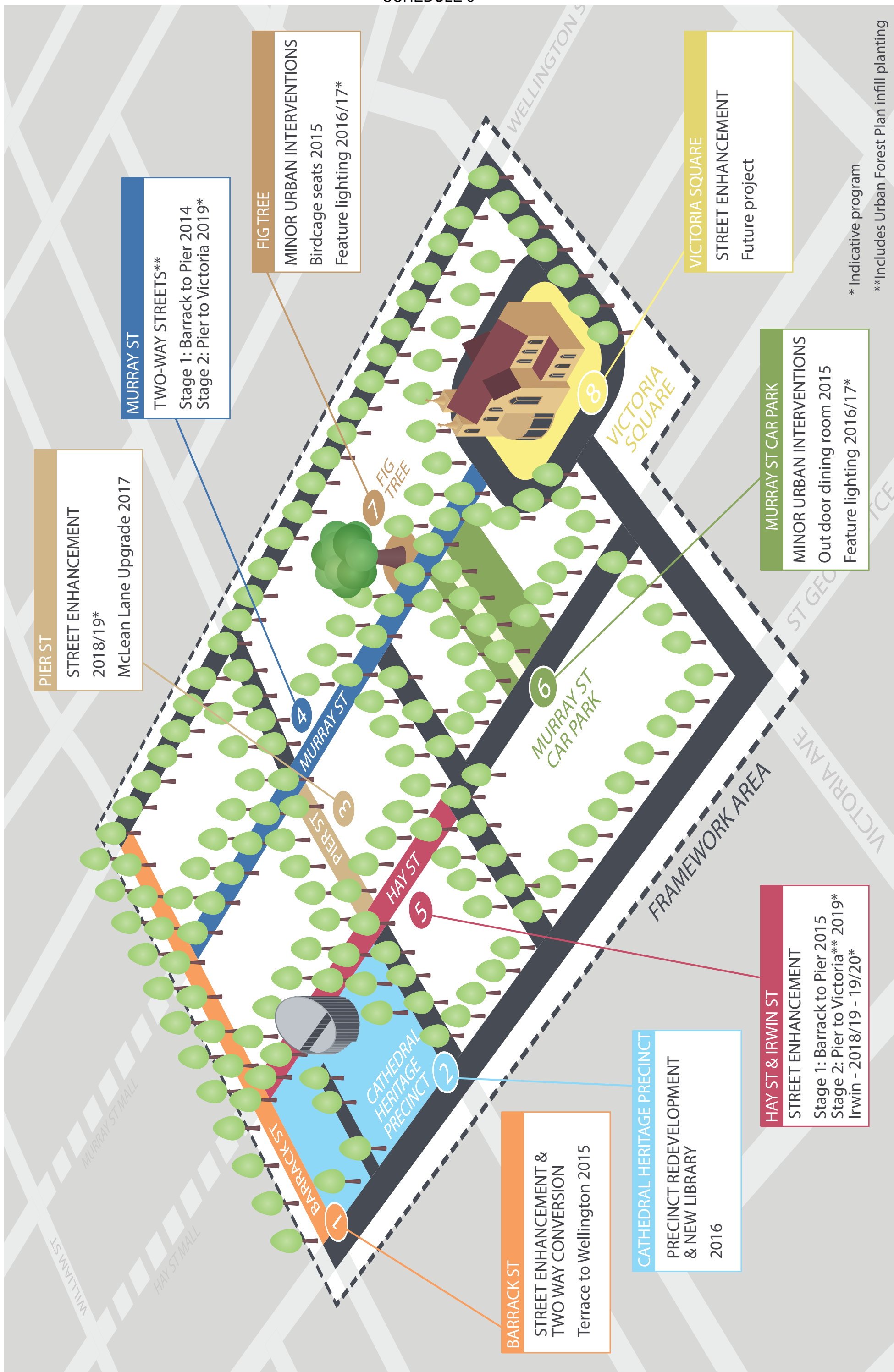
COMPLETED PROJECTS

2016 - 2017 PROJECTS

HIGHLIGHTS

- McLean Lane - Upgrade early 2017
- Lighting implementation projects
- Wellington Square - masterplan
- Way-finding signage Subiaco
- Urban Forest implementation - tree planting
- Perth Concert Hall Forecourt - concept design
- Kings Park Road - masterplan

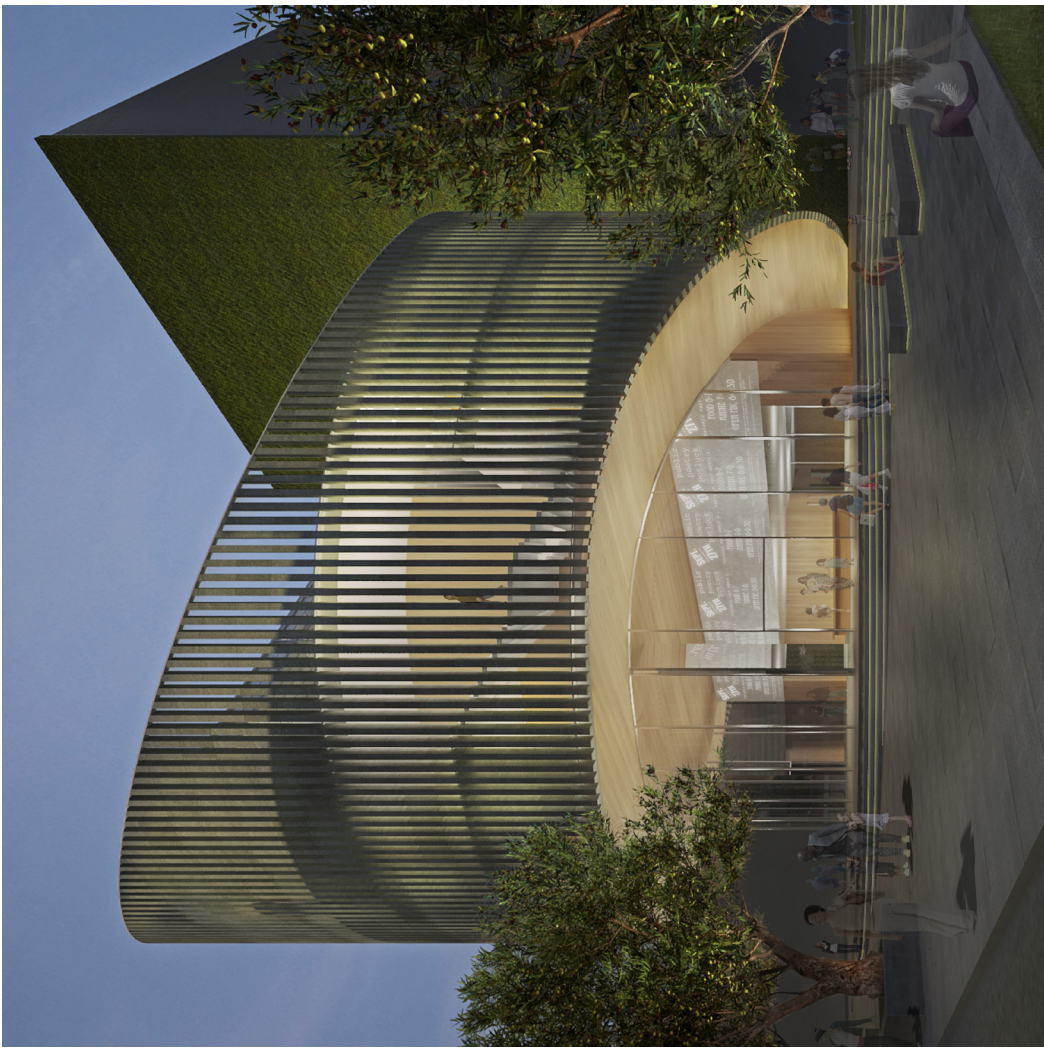
EAST END PROJECTS - COMPLETED & PROPOSED



EAST END PROJECTS - COMPLETED - LARGE SCALE



BARRACK STREET ENHANCEMENT & TWO WAY CONVERSION 2015



CATHEDRAL HERITAGE PRECINCT - NEW CITY LIBRARY 2016

EAST END PROJECTS - COMPLETED - FINE GRAIN



MINOR URBAN INTERVENTIONS - BIRD CAGE SEATS 2015



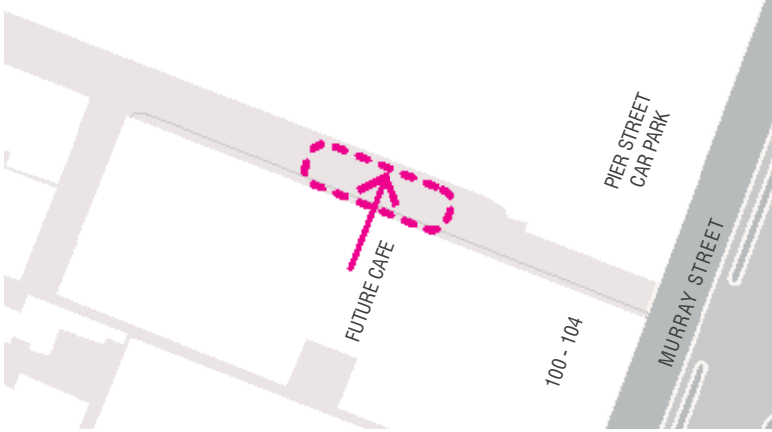
MINOR URBAN INTERVENTIONS - HAY STREET OUT DOOR DINING ROOM 2015

EAST END PROJECTS - PROPOSED - MCLEAN LANE UPGRADE

Opportunities

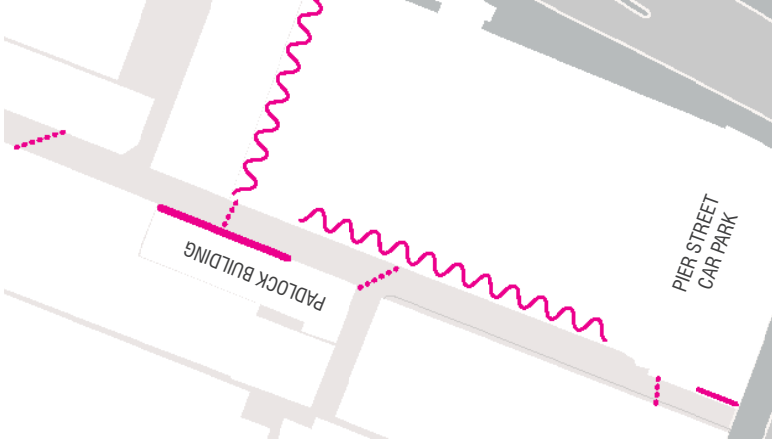
INTRODUCE ACTIVITY

- create a flush pavement zone and partially restrict vehicle access (subject to consultation) to allow future cafe to spill in to the lane
- activity will facilitate passive surveillance and enhance perception of a safe environment



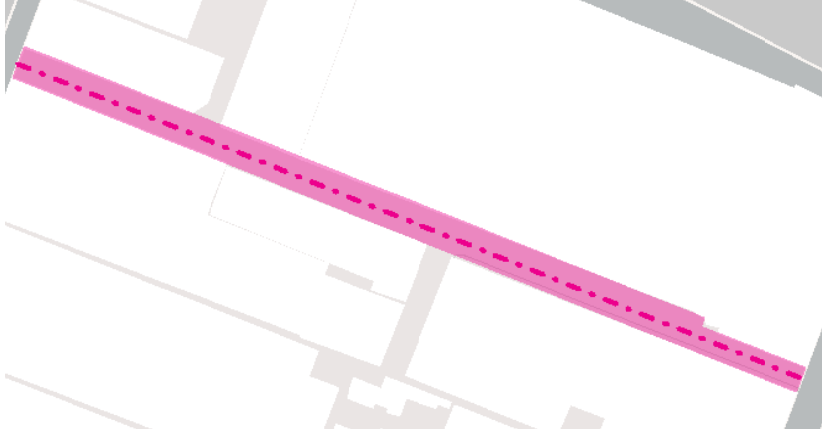
INTRODUCE CHARACTER AND COLOUR

- commission artwork for the Pier Street car park wall to feature the story of Bob McLean and the attempted robbery of his second-hand furniture shop
- introduce other decorative elements such as signage, text-based art and feature lighting to further develop a unique character for the laneway
- highlight interesting character features of the Padlock Building



IMPROVE AMENITY

- upgrade stormwater drainage infrastructure
- connect down-pipes to stormwater system
- replace asphalt paving
- create a central spoon drain using historic cobblestones



IMPROVE PERSONAL SAFETY

- modify Pier Street car park emergency stairs and work with property owners to eliminate concealment opportunities
- upgrade lighting
- install CCTV cameras



Concept Design Illustration



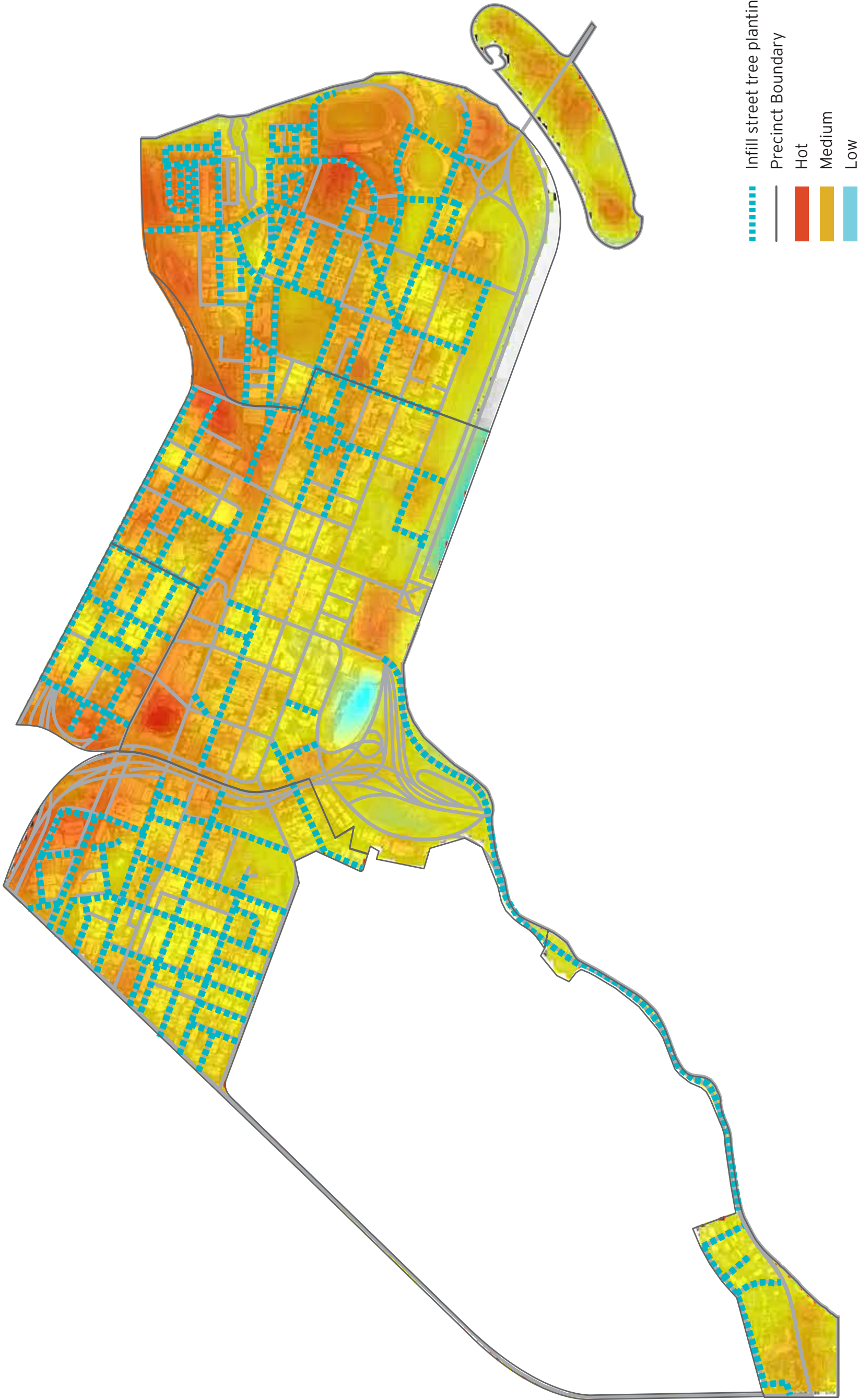
McLean Lane

02 Opportunities & Concept

March 2016

EAST END PROJECTS - PROPOSED - URBAN FOREST INFILL PLANTING

SCHEDULE 5



SOURCE: Draft Urban Forest Plan

EAST END PROJECTS - PROPOSED - HAY STREET ENHANCEMENT



PROPOSED



DESIGN PRINCIPLES

Major Pedestrian Avenue

- » Strengthened link between the city core and the city's east.
- » Tree-lined avenue as an extension of the Hay Street Mall.
- » Elegant, simple and consistent streetscape treatment.
- » Opportunities for street-based activity.

Integrated Cycle Route

- » Improved safety, comfort and connectivity for cyclists.

Traffic

- » Two-way movement improving legibility and permeability.
- » Slow speed environment.

