



**COMBINED EMERGENCY MANAGEMENT
ARRANGEMENTS**

FOR

**THE CITY OF PERTH & THE BOTANIC GARDEN &
PARKS AUTHORITY**

PART ONE

**WESTERN AUSTRALIAN
EMERGENCY MANAGEMENT ARRANGEMENTS**

CONTENTS

1. Introduction	3
2. Authority	3
3. Aim	3
4. Scope	3
5. Emergency Management Act, 2005	4
6. Emergency Management Committees	4
6.1. State Emergency Management Committee (SEMC)	4
6.1.1. State Emergency Coordination Group (SECG)	5
6.2. District Emergency Management Committee (DEMC)	5
6.3. Local Emergency Management Committee (LEMC)	5
7. Emergency Management Structure	6
8. Hazard Management Agency (HMA)	7
9. WESTPLANS	7
10. SEMC Policy Statements	7
11. Annex A – WESTPLANS and HMA	8

1. Introduction

Australia faces a range of natural and man made hazards, which have the potential to threaten life, cause injury, damage property and the environment. Under the residual powers of the Australian Constitution, the States / Territories Governments are responsible for measures to manage these hazards, whilst the Commonwealth provides assistance and coordinates federal resources, including Defense Force resources, in support of the requesting State / Territory. The Commonwealth also provides the forum where State / Territories can share methodologies and develop principles for the management of hazards.

Each State / Territory has established its particular arrangements to manage emergencies and have enacted Legislation to give effect to these arrangements. In Western Australia, the Emergency Management Act was proclaimed in 2005. Prior to this, a number of “policies” were in place under the authority of a Cabinet Minute, which have been incorporated into the new Act and the ongoing Regulations under development.

2. Authority

The CoP/KP Emergency Management Arrangements were prepared under the authority of the Emergency Management Act 2005. The Arrangements were developed by the Local Emergency Management Committee (LEMC) and approved by the Council of the City of Perth and the Botanic Garden & Parks Authority. They have been submitted for comment and endorsement by the District Emergency Management Committee (DEMC) and have been lodged with the State Emergency Management Committee (SEMC).

3. Aim

The aim of the Emergency Management Arrangements is to make provision for:

1. *The **Prevention** of*
2. ***Preparation** for*
3. ***Response** to*
4. *and **Recovery** from*

Any emergency affecting the City of Perth Community, be they Resident or Transient. These principles apply nation-wide and are collectively referred to as

P P R R or the Comprehensive Approach

4. Scope

These arrangements apply to all areas falling within the City of Perth Boundaries as defined by the Local Government Act. They also apply to emergencies, which may occur within the boundaries of the King’s Park and Botanic Garden Authority. The City of Perth and the Botanic Gardens and Parks Authority have agreed, for emergency management purposes, to form a joint Local Emergency Management Committee for this purpose.

5. Emergency Management Act, 2005

The Act is divided into Ten Parts, which cover:

1. Preliminaries
2. State Arrangements
3. Local Arrangements
4. Hazard Management
5. State of Emergency
6. Emergency powers
7. Compensation & Insurance
8. Offences (under the Act)
9. Employment Protection
10. Miscellaneous (provisions)

It is a powerful Act, which has benefited from the experiences of other States / Territories in Australia. It provides for a clear EM Structure and has assigned specific roles to State Government Departments, designated as either Hazard Management Agencies (HMA) or Support Agencies, and of course to Local Government. The RECOVERY function has been specifically assigned to Local Government and these arrangements will include a Recovery plan for the City. The most important provision however lies in the requirement to have EM Arrangements documented, approved, tested and regularly reviewed.

6. Emergency Management Committees

The Act establishes a structure of Emergency Management Committees at three levels:

1. At State Level
2. At District Level
3. At Local Level

These Emergency Management Committees are composed of key stakeholders at each level, who have an emergency management function. The Committees are required to furnish annual reports to Parliament on EM activities, including the number of plans produced and exercises conducted. They must also provide Post Operative Reports on any major emergencies which have occurred.

6.1. State Emergency Management Committee (SEMC)

This is the peak body for emergency management policy under the Act. It does not have an “operational role”. It has the following broad functions:

1. Prepare and promulgate Regulations under the Act.
2. Approve State Level Plans (WESTPLANS) prepared by Hazard Management Agencies.
3. Prepare and promulgate EM Policy (SEMC Policies).
4. Approve Plans submitted from District level.

6.1.1. State Emergency Coordination Group (SECG)

The SECG is the operational forum of the SEMC and is Chaired by the State Emergency Coordinator, the Commissioner of Police. It is responsible for the Strategic Direction of the State's EM response and reports to the State Disaster Council should a "state of emergency" be declared.

6.2. District Emergency Management Committee (DEMC)

The State is divided into EM Districts (coincidental with Police Districts and Local Government boundaries). Each District has an EM Committee, which has responsibility to:

1. Provide advice and support to Local Committees
2. Make appropriate EM arrangements for the District.

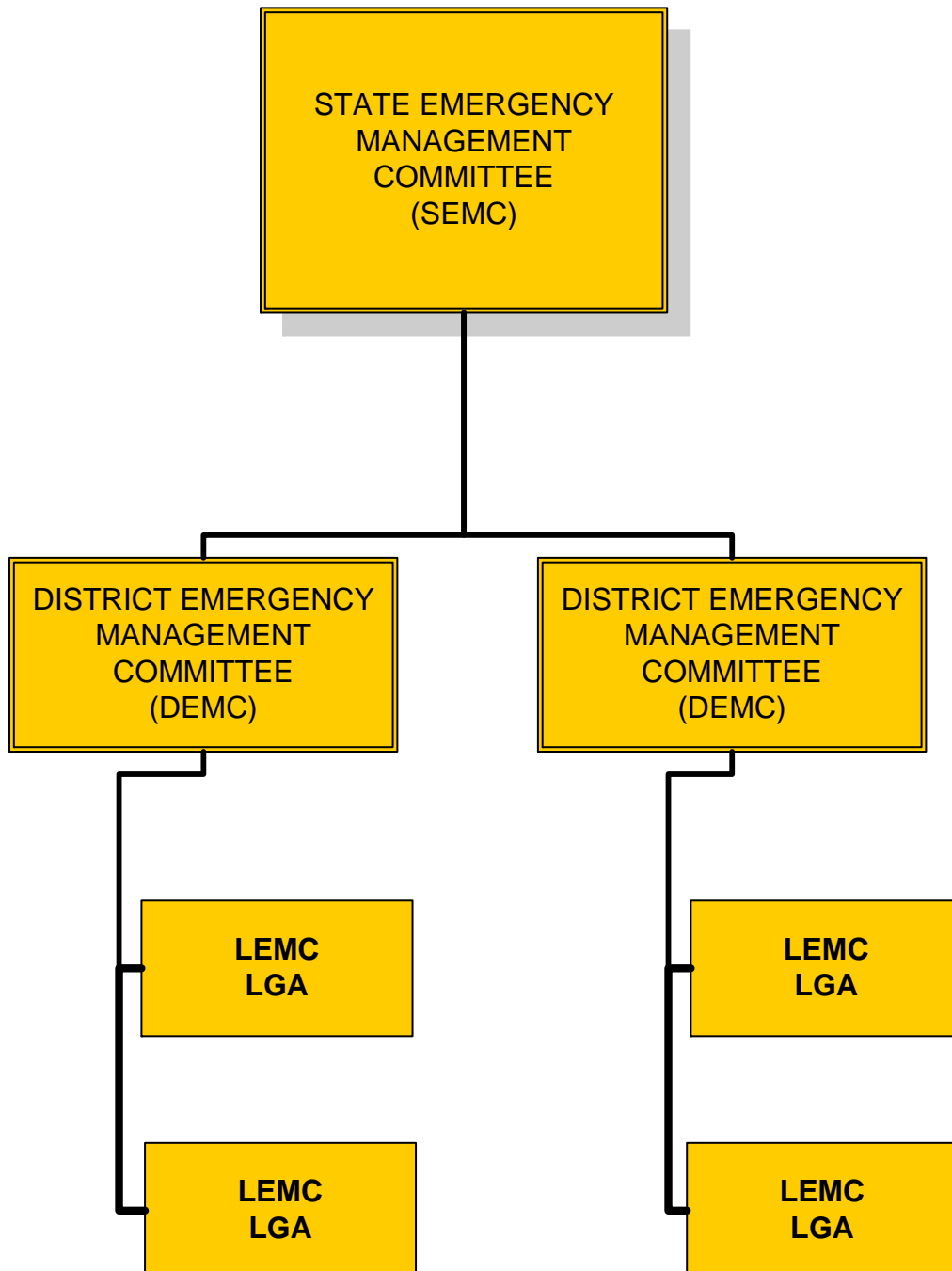
There are 6 Districts within the Perth Metropolitan Area each with a DEMC. In order to ensure coordination within these Districts, a Metropolitan Committee has also been established.

6.3. Local Emergency Management Committee (LEMC)

The LEMC is the focal point for Emergency and Risk Management arrangements in the Community. Committees are based on Local Government Authority (LGA) boundaries and the Act provides for two or more LGAs to combine for EM purposes. In particular, LEMC have the prime responsibility for the documentation, testing and maintenance of the Community's EM Arrangements.

7. Emergency Management Structure

The Emergency Management Structure is shown below. It should be clearly understood that the Committee Structure **does not have an operational function**, but are required to furnish post operations reports to the SEMC through the district structure.



8. Hazard Management Agency (HMA)

The Act provides for the nomination of Departments & Authorities to be the Hazard Management Agency (HMA) for particular threats. By definition, a HMA is responsible for *ensuring* that measures are taken for the PPRR process. HMAs are selected in light of their particular expertise, resources or legislative responsibility. Each HMA can devolve responsibility for actually carrying out part of the PPRR process to another Authority, provided this is done by mutual agreement and the approval of the SEMC. The RECOVERY function is a responsibility of the Department of Premier & Cabinet; however, under the terms outlined above, Local Government is identified as the Authority most suited to *Lead* community recovery operations.

9. WESTPLANS

At the State level, the Emergency Risk Analysis for the State of Western Australia has identified a number of Hazards, which will require Emergency Management. These in turn have been assigned to HMAs. These Agencies, usually Government Departments, are required to prepare the State Level Plan for the particular hazard. These are known as WESTPLANS (followed by the name of the hazard or function) and they establish the following:

1. The Responsible Agency
2. The Aim, Scope and Objectives of the Plan
3. Activation Arrangements
4. The Roles & Responsibilities of Participating Organisations.
5. The Operational Structure
6. The Interface with Support Plans

Current WESTPLANS are listed at Annex A.

10. SEMC Policy Statements

Prior to the promulgation of the Emergency Management Act 2005, the SEMC prepared Policy Statements on various topics for use in WA. These are being progressively reviewed and deleted, amended or incorporated into other Policy Statements. Some remain current and are of particular interest to Local EM Arrangements.

Further details on these SEMC Policy Statements and their currency can be found on the main Fire and Emergency Services Authority (FESA) website, www.fesa.wa.gov.au.

11. Annex A – WESTPLANS and HMA

HAZARD	RESPONSIBLE AGENCY	WESTPLAN LINK
Air transport emergencies	WA Police Service	Aircrash (2005)
Earthquake	Fire and Emergency Services Authority	Earthquake (2003)
Exotic animal disease	Department of Agriculture	Exotic Animal Disease (1993)
Fire (wildfire/bush fire)	Fire and Emergency Services Authority/Department of Conservation and Land Management/Local Government	Bushfire (2005)
Fire (urban)	Fire and Emergency Services Authority	Urban Fire (2000)
Flood	Fire and Emergency Services Authority	Flood (2004)
Fuel Shortage Emergencies	Department of Consumer and Employment Protection	<i>Not available - currently under review</i>
Hazardous materials emergencies (including radioactive materials)	Fire and Emergency Services Authority	HAZMAT (2005)
Human epidemic	Department of Health	Human Epidemic (2001)
Land search and rescue	WA Police Service	Land SAR (2000)
Landslide	Fire and Emergency Services Authority	<i>Draft under development</i>
Marine oil pollution	Department for Planning and Infrastructure	<i>Not available - currently under review</i>
Marine transport emergencies	Department for Planning and Infrastructure	Marine Transport Emergencies (2004)
Nuclear-powered warships	WA Police Service	Temporarily unavailable
Offshore petroleum operations emergencies	Department of Industry and Resources	WITHDRAWN
Road transport emergencies	WA Police Service	Traffic Crash (2005)
Sea search and rescue	WA Police Service	Marine SAR (2005)
Space re-entry debris	WA Police Service	Space Debris (2001)
Storm/tempest	Fire and Emergency Services Authority	Storm (2004)
Tropical cyclone	Fire and Emergency Services Authority	Cyclone (2004)
Tsunami	Fire and Emergency Services Authority	Tsunami (1999)

SUPPORT PLANS

SUPPORT FUNCTION	RESPONSIBLE AGENCY	WESTPLAN LINK
Health support	Department of Health	Health Support (2004)
Isolated communities freight subsidy	Fire and Emergency Services Authority	Freight Subsidy Plan (1999)
Public information support	SEMC Public Information Group	Public Information (2002)
Registration and inquiry support	Department for Child Protection	Registration and Inquiry (2003)
Recovery support	Department of the Premier and Cabinet	Recovery (2003)
Telecommunications support	Fire and Emergency Services Authority	Telecommunications (2005)
Welfare support	Department for Child Protection	Welfare (2003)

SPECIAL PLANS

SPECIAL FUNCTION	RESPONSIBLE AGENCY	WESTPLAN LINK
Reception of overseas casualties support	Department for Child Protection	Reception 2003

